

REFERENCES AND NOTES

Ref. No.	A.P.N.	Notes	Ref. No.	A.P.N.	Notes
1	054-181-010, 020	X6E-1403			
2	054-181-060,070,180,190	X6E-95, X6E-2513			
3	054-181-060	UP 85-25, OSP 85-3			
4	054-181-070	V 84-34			
5	054-181-090,100,120 200,210	X6E-1169			
6	054-181-220,230	X6E-1376			
7	054-181-220,230	X6E-2795			
8	054-182-010	UP 81-13			
9	054-183-030	X6E-2090			
	054-237-260				
10	054-184-050,060 290	X6E 2128, (060 was not outlined on hang map)			
11	054-184-050	Var 778			
12	054-184-060 290	Var 626			
13	054-184-070	UP 2421 ?			
14	054-184-110,120,130	X6E-1242			
15	054-184-150,160	MA-OA 85-119			
16	054-184-170,180,190	X6E-65			
17	054-184-200,210 280 ptn	X6E-557, see MIS 99-0004			
18	054-185-010,020,030	X6E-391			
19	054-185-130,140	X6E-397 (3/10/99, but never recorded) SEE PLN 2001-0074			
20	054-185-080,090 120	X6E-2769, also portion of 054-247-290			
21	054-185-100,110	X6E-2803			
22	054-185-090 120	VA 8-78 ?			
	054-247-290				
23	054-184-170	V 87-35			
24	054-181-230	MA-OA 88-103			
25	054-184-170	V 89-101			
26	054-182-010	MA-OA 89-62			
27	054-181-190	V 89-157			
28	054-184-060 290	UP 89-20			
29	054-184-050	V 90-4			
30	054-184-080	V 90-19			
31	054-185-120	LLA 78-6, Final 6-14-78			
	054-247-290				
32	054-182-070	V 91-26			
33	054-181-070	MNA 91-0045			
34	054-184-050,060 290	USE 91-0013			
35	054-184-280	MIS 99-0004, 2-18-99			
36	054-184-050, -060 290	merger 2-19-08, PLN 2007-00242			
37	As indicated	Rezoning - BOS Ordinance #4815 effective 08-22-2019; M-1 rezoned to M-1/NFO			

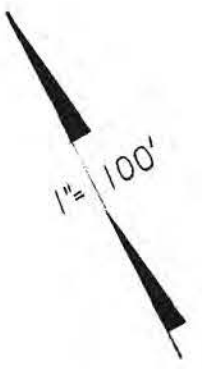
TAX CODE AREA _____

Book-54
pg. 17

54-18

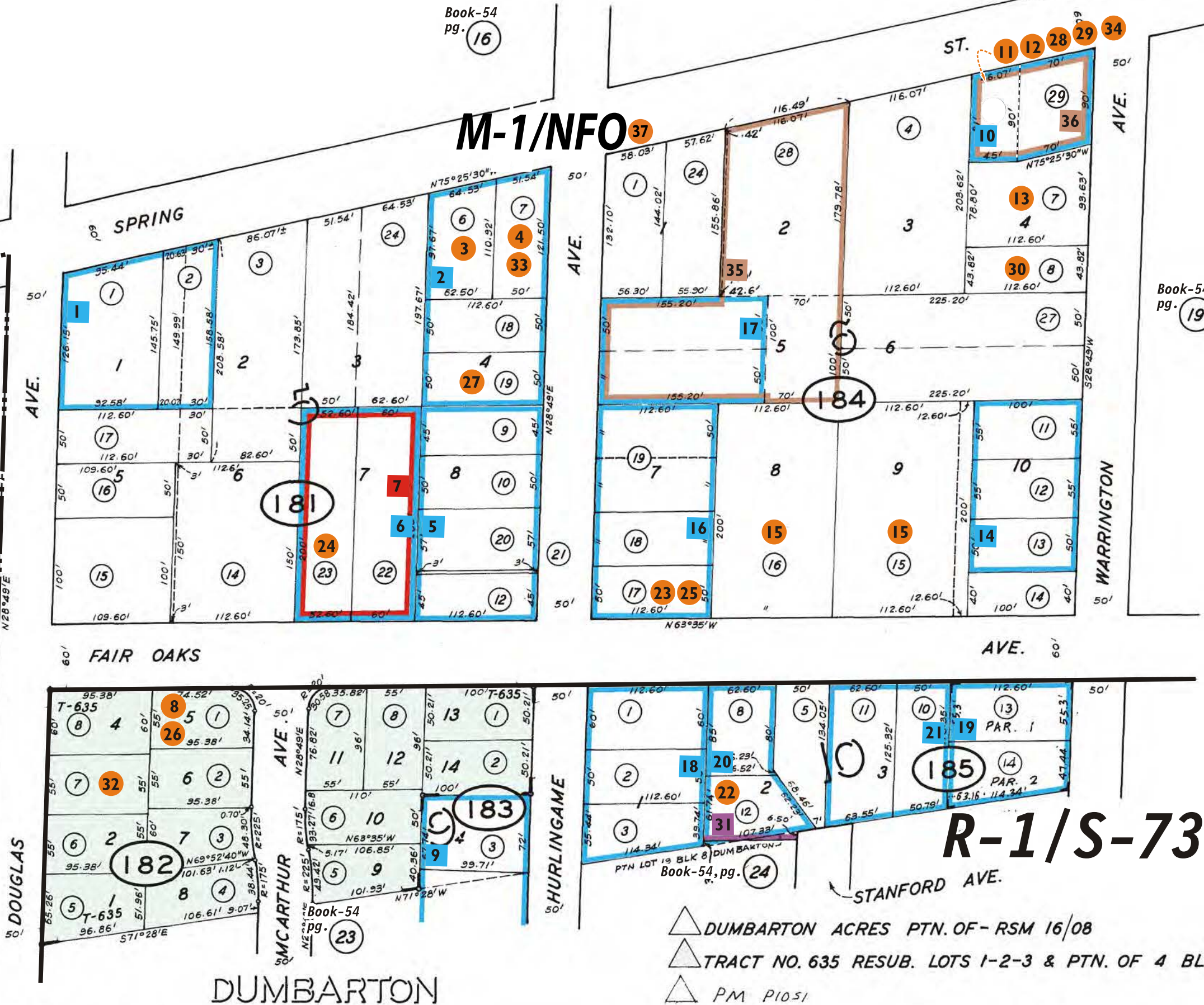
Book-54
pg. 16

M-1/NFO



Book-54
pg. 19

REDWOOD VILLAGE
LIMITS
OF
REDWOOD CITY



R-1/S-73

20.6

- △ DUMBARTON ACRES PTN. OF - RSM 16/08
- △ TRACT NO. 635 RESUB. LOTS 1-2-3 & PTN. OF 4 BLK. 9 RSM 33/30
- △ PM P1051