

REFERENCES AND NOTES

Ref. No.	A.P.N.	Notes	Ref. No.	A.P.N.	Notes
1	058-011-010, 020, 030, 040, 060, 070 058-012-120 057-061-020, 030 057-062-060, 140 thru 190, 240, 250	X6E-649. Not drawn. Superceded by X6E-1134, note #5.	21	058-012-260, 280, 290	X6E-2807 (260 is in Redwood City)
2	058-011-010 thru 040, 060, 070, 058-012-120 057-061-020, 030 057-062-140 thru 190, 240, 250	X6E-1066. Not drawn. Superceded by X6E-1134, note #5.	22	058-011-020	Merger 1-2-79
3	058-011-010, 020, 030, 040, 060, 070 058-012-120	X6E-1074, 9-28-53. Not drawn. Superceded by X6E-1134, note #5.	23	058-011-030	Merger 1-2-79
4	058-011-010, 020, 030, 040, 060, 070 058-012-120	X6E-1123, 10-26-53. Not drawn. Superceded by X6E-1134, note #5.	24	058-012-050	MA-OA 87-62
5	058-011-010, 020, 030, 040, 060, 070 058-012-120	X6E-1134			
6	058-011-020, 030, 040, 060, 070 058-012-120	X6E-1513			
7	058-011-030	VAR 471			
8	058-011-040, 060	VAR 1345. "Wilton variance" (040), = 2 variances?			
9	058-011-060, 070	X6E-1543			
10	058-012-010 057-061-030	Merger 1-2-79 (Merged w/ 057-061-030)			
11	058-012-020, 030	X6E-1039			
12	058-012-020 057-061-020	Merger 1-2-79			
13	058-012-050, 070, 080	X6E-691			
14	058-012-050	Merger 1-2-79			
15	058-012-100	Merger 1-2-79			
16	058-012-220, 230	X6E-2264			
17	058-012-220	Merger 1-2-79			
18	058-012-230	Merger 1-2-79			
19	058-011-050 058-012-260, 280, 290	X6E-109 (260 is in Redwood City)			
20	058-011-050 058-012-260, 280, 290	X6E-753 (260 is in Redwood City)			

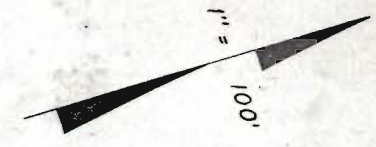
TAX CODE AREA - - - - -

CN 58-1

R-1/S-13

SAN MATEO LAND ASSN. SUB.

BK-51
4



R-1/S-101/DR

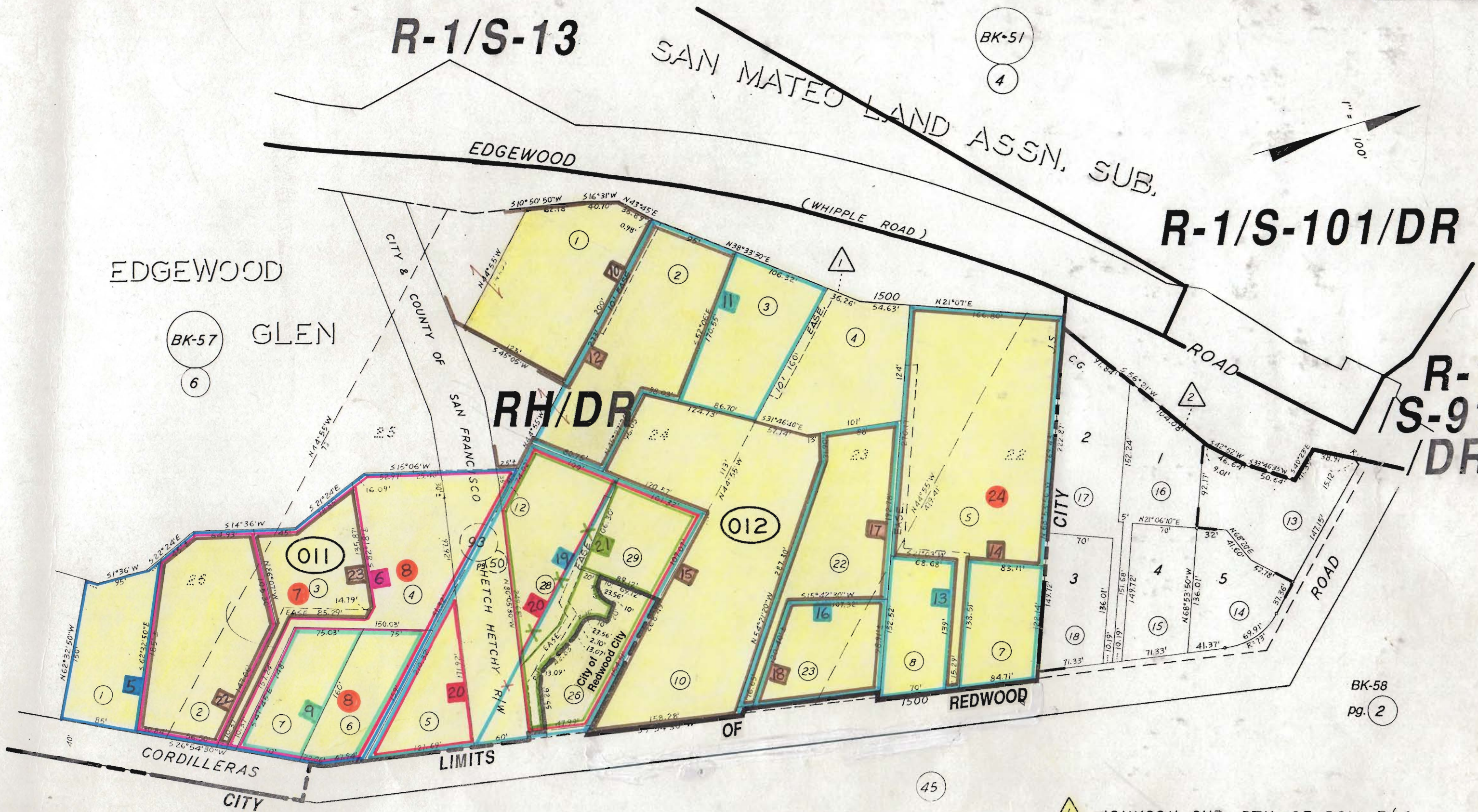
EDGEWOOD

BK-57
6

GLEN

RH/DR

R-1
S-91
/DR



BK-58
pg. 2

- 1 JOHNSON SUB. PTN. OF RSM 7/2
 - 2 CORDILLERAS GLEN RSM 53/23
- 19.5
24.2