





TAX CODE AREA

**ALL CD**

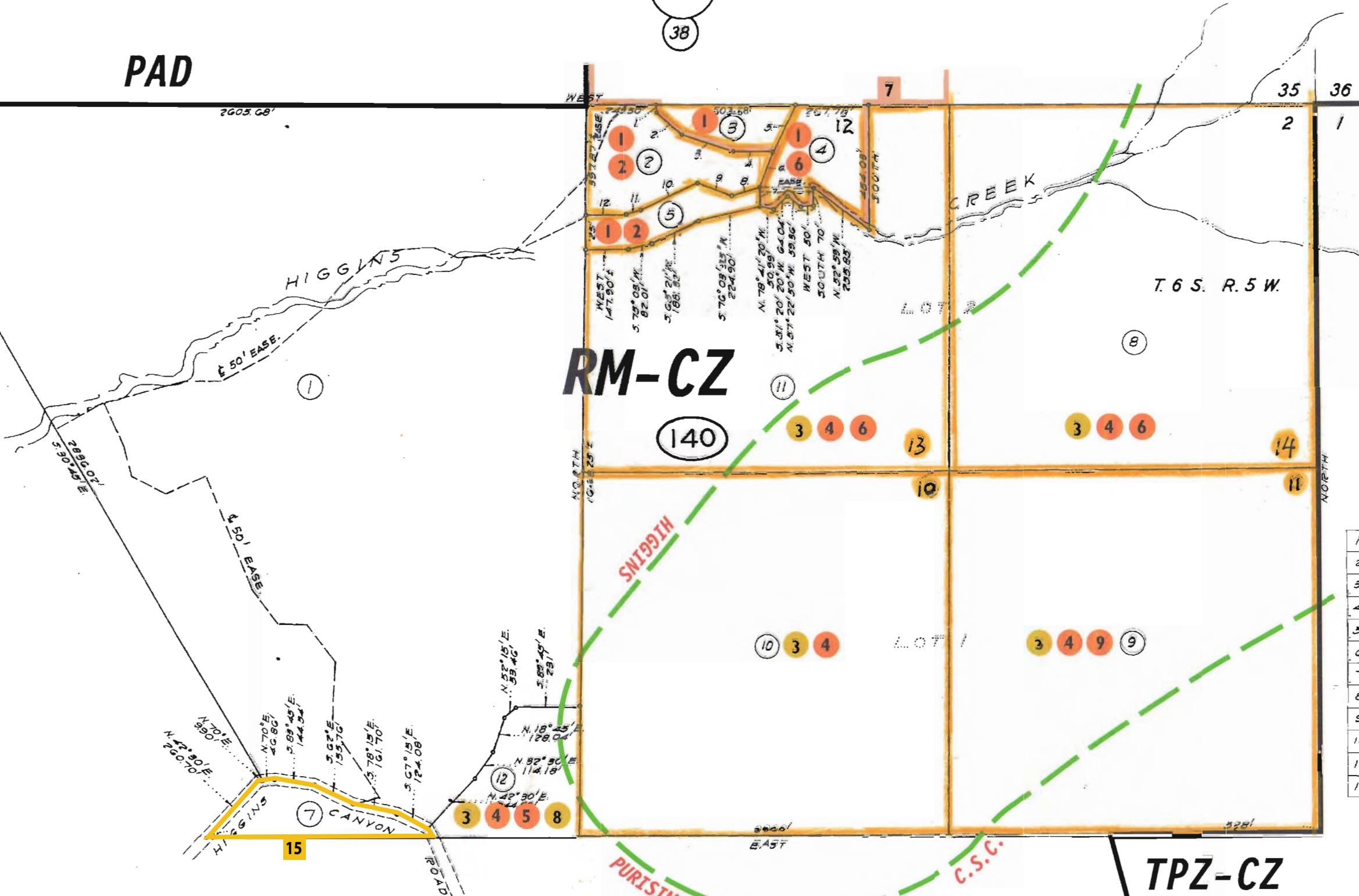
66-14

**PAD**

34 35  
3 2

35 36  
2 1

BK-64  
38



**RM-CZ**

140

T. 6 S. R. 5 W.

HIGGIN'S

PURISINA

C.S.C.

**TPZ-CZ**

BK-67  
32

Bk-66  
pg. 12

1.	SOUTH 30'
2.	S. 46° 24' E. 110'
3.	S. 71° 22' E. 200'
4.	EAST 147.90'
5.	N. 27° E. 190.55'
6.	S. 21° W. 199.51'
7.	SOUTH 68'
8.	N. 72° 05' E. 106.50'
9.	S. 69° 15' E. 130'
10.	N. 65° 21' E. 230'
11.	N. 75° 03' E. 55'
12.	EAST 131.50'

22.5

Bk-66  
pg. 21