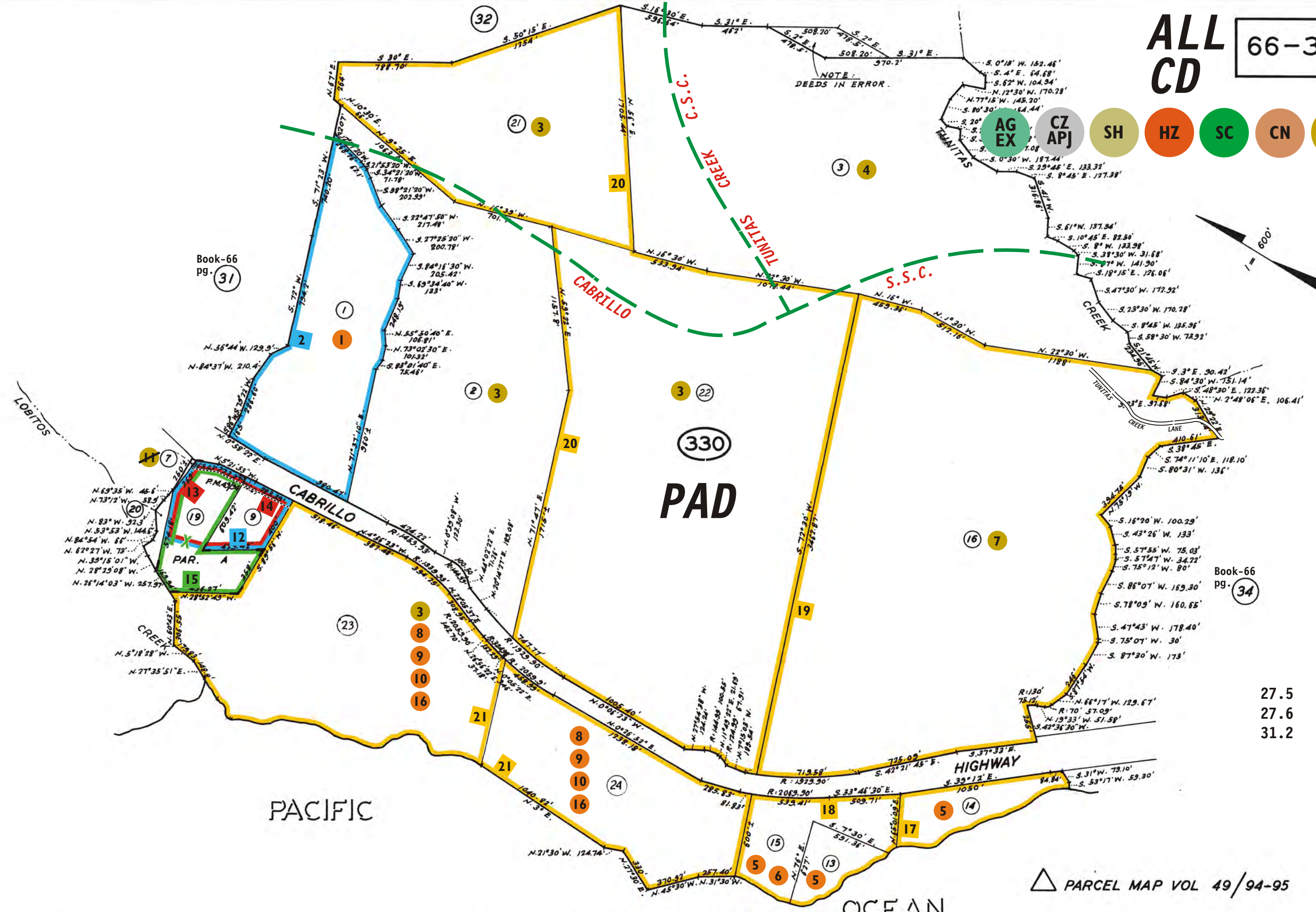
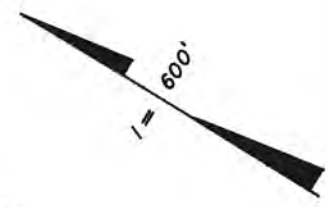


REFERENCES AND NOTES

Ref. No.	A.P.N.	Notes	Ref. No.	A.P.N.	Notes
1	066-330-010	UP 43-76			
2	066-330-010	SMN 79-45, Cert. of Comp.			
3	066-330-020, 210 thru 240	Ag. Pres. - Deency, AP 67-31			
4	066-330-030	Ag. Pres. - Hawes, AP 69-06 (inc. area in error.)			
5	066-330-130, 140, 150	X6E-3049, Disapproved 2-11-77			
6	066-330-150	MA-DA 84-41			
7	066-330-160	Ag. Pres. - Chalfant, AP 66-37			
8	066-330-230, 240	UP 1005			
9	066-330-230, 240	Houses in Markin's B. cannot be added on it; non-conform, S6130			
10	066-330-230, 240	MA-DA 83-39			
11	066-330-070 not inc.	Ag. Pres. - Arab, AP 67-39; 070 is not on Assessor list.			
	066-310-020, 060, 160				
12	066-330-090, 190 p/n.	X6E-2192			
13	066-330-090, 190 p/n.	X6E-2333			
14	066-330-090, 190	60' Setback			
15	066-330-190	SMN 78-34			
16	066-330-230, 240	VA 89-18, CDP 89-50, AR 89-12			
17	066-330-140	COC 91-0006			
18	066-330-130, 150	COC 95-0006, 9-20-95. One legal lot, type A.			
19	066-330-160	COC 95-0004, 9-20-95, type A.			
20	066-330-210, 220	PLN 2001-00047, COC type A, 3-26-02. 2 legal parcels			
21	066-330-230, 240	PLN 2005-00500, COC TYPE A, 2 LEGAL PARCELS DOC. # 2006-148075 & 148076, 09-29-06			

Legend for zoning codes:

- AG EX (Green circle)
- CZ APJ (Grey circle)
- SH (Light green circle)
- HZ (Orange circle)
- SC (Green circle)
- CN (Light orange circle)
- AP (Yellow circle)



Book-66 pg. 31

Book-66 pg. 34

27.5
27.6
31.2

△ PARCEL MAP VOL 49/94-95

ML