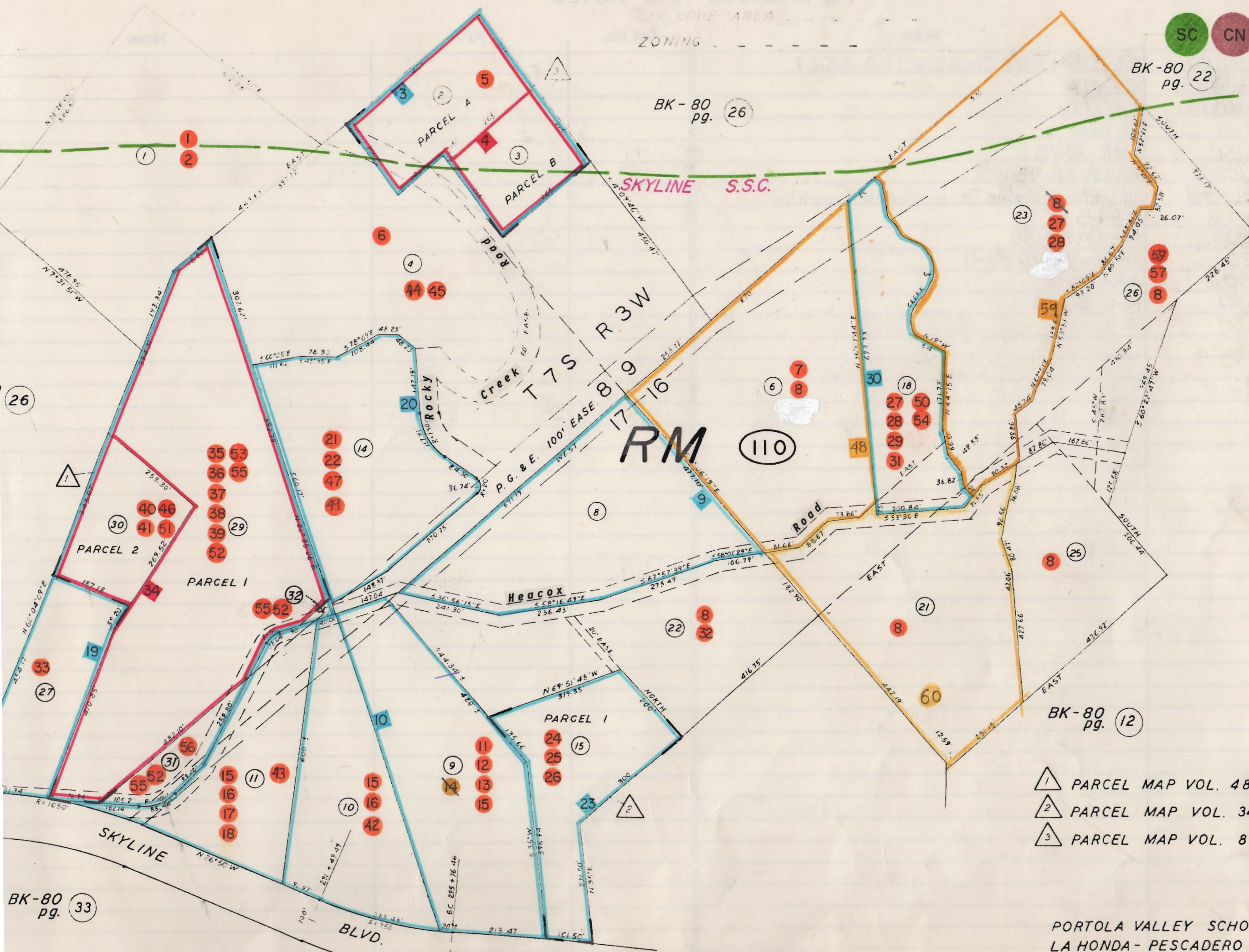


REFERENCES AND NOTES

Ref. No.	APN.	Notes	Ref. No.	APN.	Notes
1	080-110-010	AR 85-6	41	080-110-300	V 84-5
2	080-110-010	V 85-13	42	080-110-100	V 88-6
3	080-110-020, 030	X6E 2291	43	080-110-110	V 88-7
4	080-110-020, 030	X6E 2973	44	080-110-040	V 88-52
5	080-110-020	MA-OA 85-106	45	080-110-040	V 88-59
6	080-110-040	Portion RSM Vol. 2 pg. 50	46	080-110-300	MA-OA 88-113
7	080-110-060	X6E 2250, Disapproved	47	080-110-140	MA-OA 89-35
8	080-110-060, 210, 220	Not a legal bldg site. See also Note # 59	48	080-110-060	COC 89-6, Recorded 1-17-90
	230, 250, 260		49	080-110-140	AR 89-10
9	080-110-080	X6E 2230, 11-19-59	50	080-110-180	ARX 89-2, RM 89-12
10	080-110-090, 100, 110	X6E 1419, 5-24-55	51	080-110-300	ARX 89-4
11	080-110-090	VA 1620	52	080-110-290, 310, 320	MA-OA 89-112
12	080-110-090	AR 83-10	53	80-110-290	MA-OA 89-123
13	080-110-090	VA 83-17	54	080-110-180	GP 90-5, RMD 90-5, ARX 90-2
14	080-110-090	AP 78-01, Fisse. Non-renewal rec'd 11-19-80. Terminated	55	080-110-290, 310, 320	LLA 90-5 (Cannot be found - Check RMD 90-17)
15	080-110-090, 100, 110	X6E 2027, Approved 3-18-58. Why not colored?	56	080-110-310	RMD 90-17
16	080-110-100, 110	X6E 2028, Approved 3-18-58. Why not colored?	57	080-110-260	MNA 91-0017
17	080-110-110	X6E 2118, Denied	58	080-110-260	RMD 91-0012, ARC 91-0012
18	080-110-110	MA-OA 83-49	59	080-110-230	Cond. COC Type 'B' PLN2000-00386 11-21-02 # 2002-241781
19	080-110-120m 270, 290	X6E 2595, 8-27-63	60	080-110-210	COC. Type B. PLN 2012-00015 4-25-12 #2012-06852
	300, 310, 320				
20	080-110-140	X6E 2229, 11-19-59			
21	080-110-140	AR 82-4			
22	080-110-140	SP 82-3			
23	080-110-050	X6E 3291			
24	080-110-150	AR 19-77			
25	080-110-150	AR 83-3			
26	080-110-050	VA 83-14			
27	080-110-180, 230	X6E 2423, Disapproved 9-18-63			
28	080-110-180, 230	X6E 2425, Disapproved 9-19-63			
29	080-110-180	X6E 3176, Disapproved 2-15-74			
30	080-110-180	SMN 79-48, Conditional COC			
31	080-110-180	AR 80-15			
32	080-110-220	X6E 3187, Disapproved 2-15-74			
33	080-110-270	UP 1820			
34	080-110-290, 300	X6E 3307, 11-5-79			
35	080-110-290	VA 21-76, Denied			
36	080-110-290	VA 14-77			
37	080-110-290	AR 80-18			
38	080-110-290	AR 82-5			
39	080-110-290	AR 87-4			
40	080-110-300	V 83-4			

SC CN AP

80-11



- 1 PARCEL MAP VOL. 48/65
- 2 PARCEL MAP VOL. 34/32
- 3 PARCEL MAP VOL. 8/21

34.6

PORTOLA VALLEY SCHOOL DIST
LA HONDA - PESCADERO UNIFIED SCH. DIST