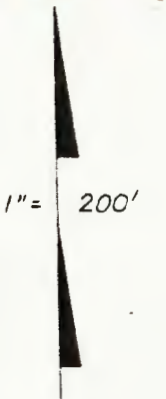


REFERENCES AND NOTES

Ref. No.	A.P.N.	Notes	Ref. No.	A.P.N.	Notes
1	083-012-110	UP 459			
2	083-012-110	UP 306			
3	083-012-110	UP 1157, store, bar			
4	083-012-110	UP 1543, s/B			
5	083-012-110	UP 1585, signs			
6	083-012-110	UP 2283, school			
7	083-012-230 ptn.	MA-0A 84-61			
8	083-014-020, 040, 090, 120, 140, 150, 180, 190	X6E 1471 (excludes ptn. 090 = road r/w)			
9	083-014-020	SP 80-18			
10	083-014-020	MA-0A 82-23			
11	083-014-020	UP 83-24			
12	083-014-040	X6E 2897			
13	083-014-040	UP 2022			
14	083-014-040	VA 87-6			
15	083-014-040	Fire Brigade. Zoning should have remained A-1/s-9. To be corrected per Dalton + Dist. Atty.			
16	083-014-090, 150, 180, 190	X6E 3100 (exc. ptn. 090)			
17	083-014-090, 180, 190	SMN 77-73 (exc. ptn. 090)			
18	083-014-ptn. 090	Amrodmax Calif. gas			
19	083-014-120	UP 827, church			
20	083-014-150	UP 904			
21	083-014-150	UP 1058, denied			
22	083-014-150	UP-X7D 1732			
23	083-014-180	ZA-V 14-73			
24	083-014-190	UP 1017			
25	083-015-010	X6E 2338			
26	083-014-040, 090, 150, 180, 190	X6E 1550, Disapproved 2-21-57			
27	083-014-090	V 88-14			
28	083-012-070	GP 88-10			
29	083-012-030, 180	Merger 6-14-83, void			
30	083-012-060	Merger 6-14-83			
31	083-012-110	Merger 6-14-83			
32	083-012-220	Merger 6-14-83, void			
33	083-012-230	MIS 96-0022, 5-9-96, one lot. (correction 6-27-96)			
34	ALL	Within La Honda C.S.C.			

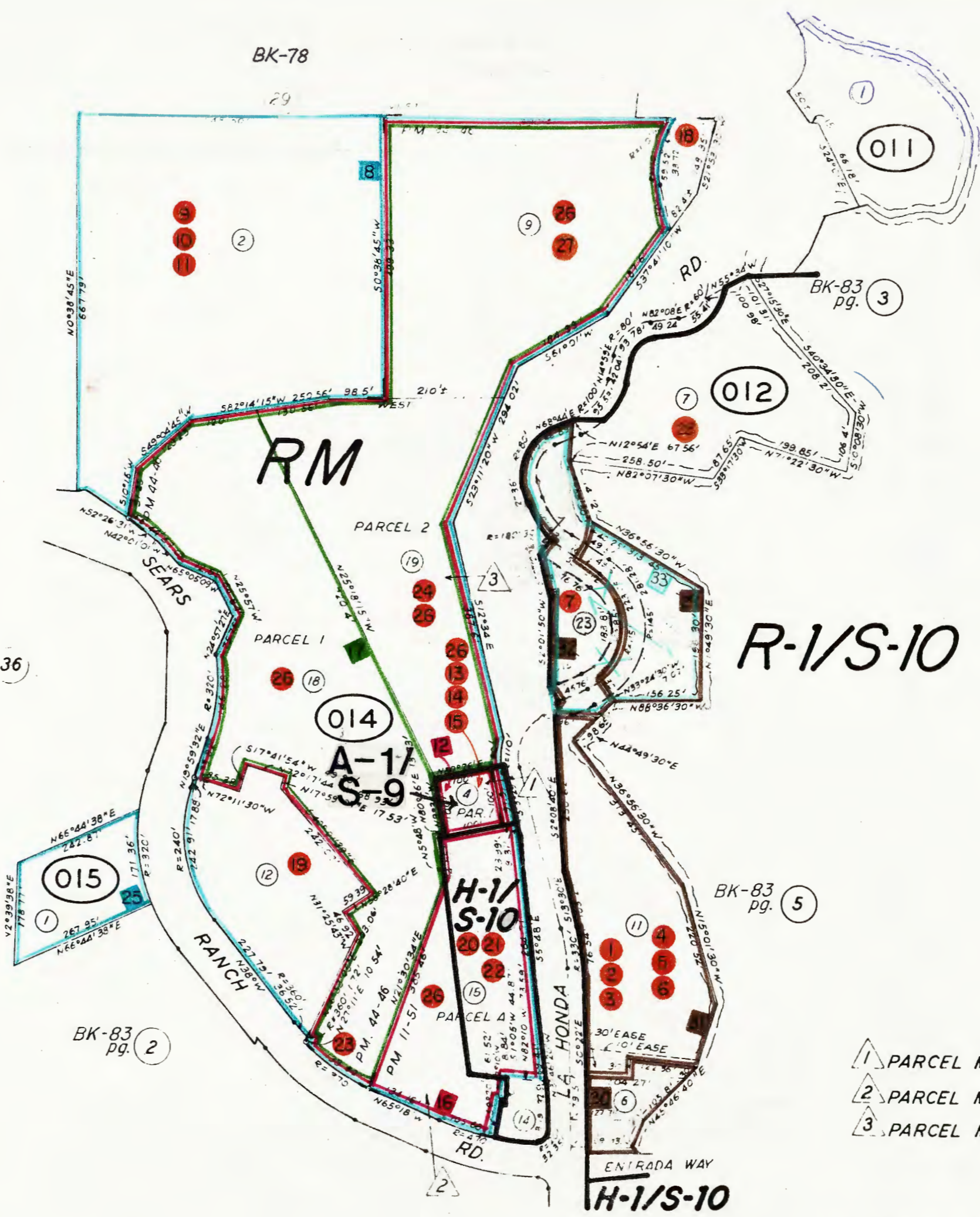


BK-83 pg. 36

BK-83 pg. 36

BK-83 pg. 2

BK-83 pg. 5



- 1 PARCEL MAP VOL 4/4
- 2 PARCEL MAP VOL 11/51
- 3 PARCEL MAP VOL 44/46-47

33.6