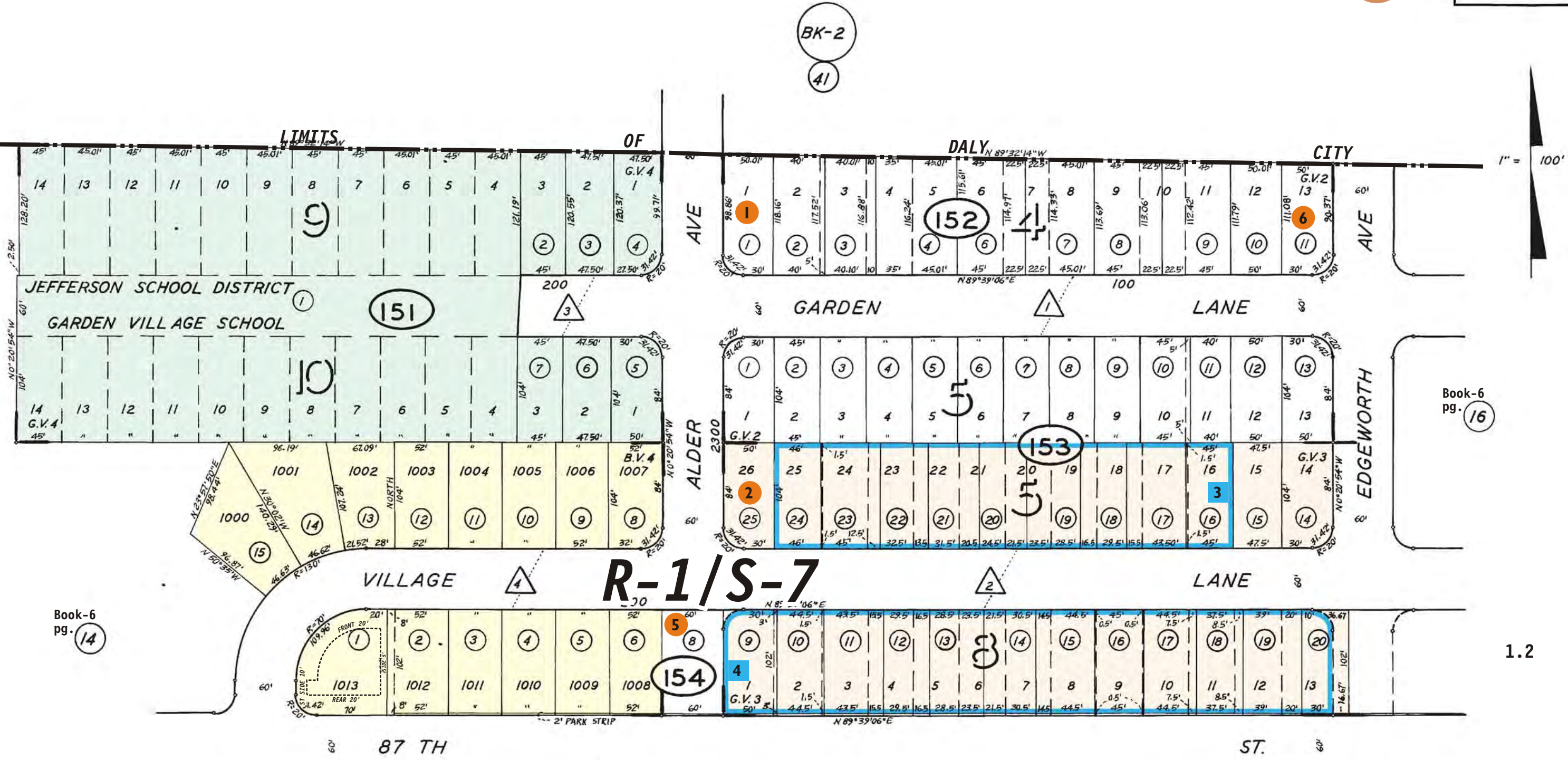




R-E/  
S-9



1" = 100'

Book-6  
pg. 16

Book-6  
pg. 14

1.2

R-3/S-3

Book-6  
pg. 18

C-1/  
S-7

- △ GARDEN VILLAGE NO. 2 RSM 22/17
- △ " " NO. 3 " 23/10
- △ " " NO. 4 " 24/2
- △ BROADMOOR VILLAGE NO. 4 " 28/8,9,10