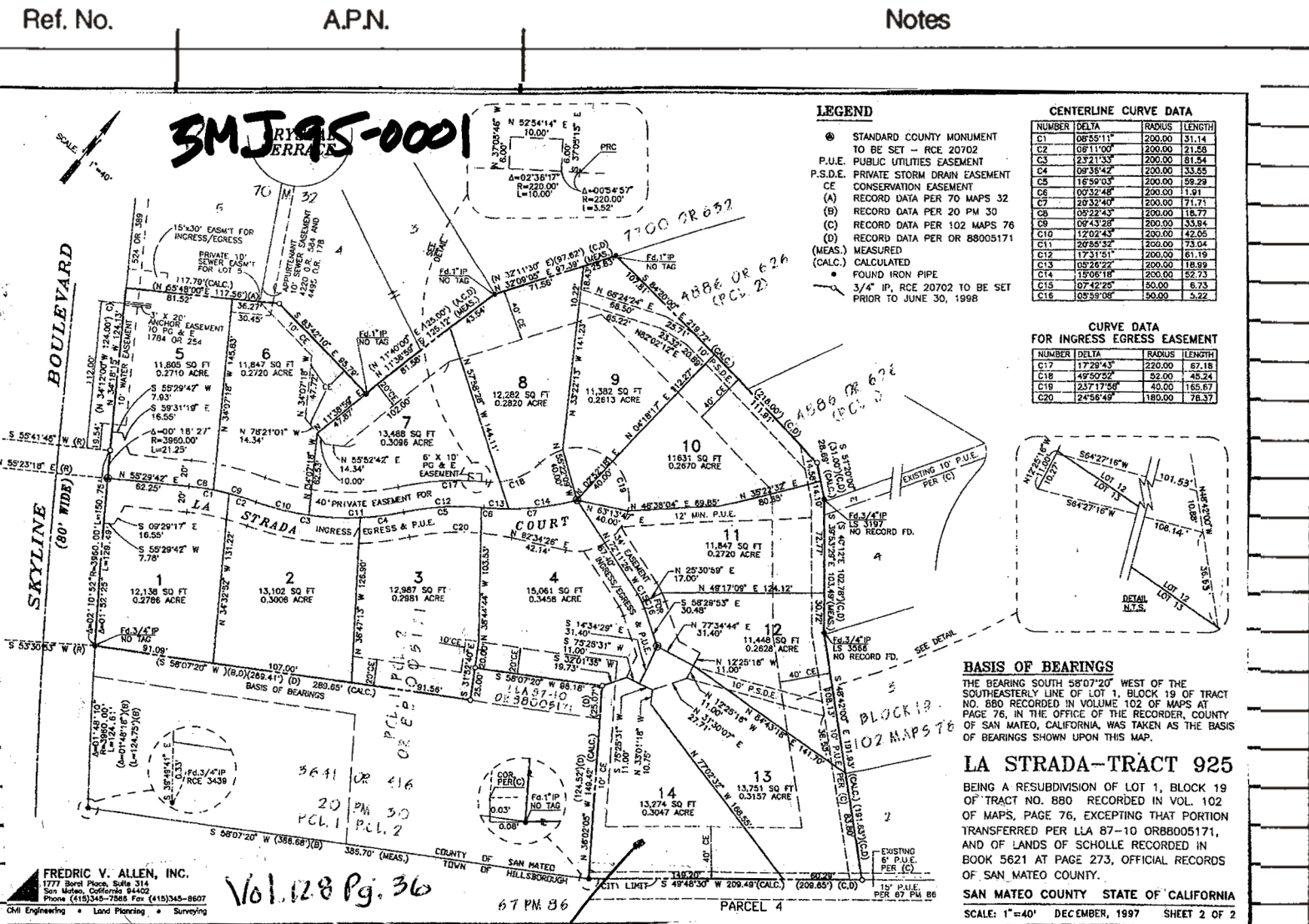


REFERENCES AND NOTES

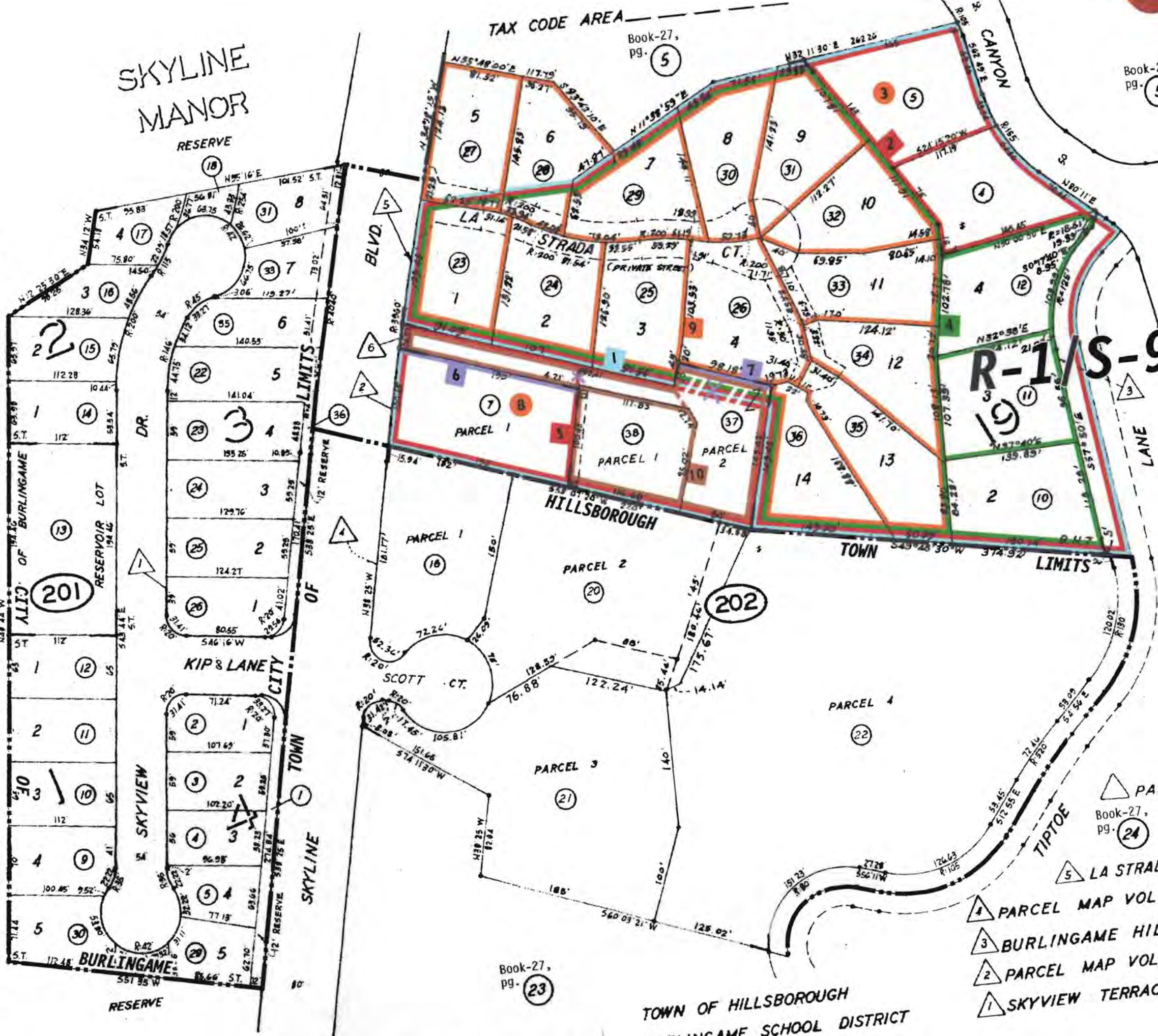
Ref. No.	AP.N.	Notes
1	027-202-040, 050, 070, 100, 110, 120, 230-380	X6E-2328 Map note: leave note but remove blue line next update (270 ptn, 280)
2	027-202-040, 050, 230-360	X6E-2730
3	027-202-050	VA 9-76
4	027-202-100, 110, 120, 230 thru 360	SMJ 77-3
5	027-202-070, 370, 380	X6E-2352
6	027-202-070, 370, 380	LLA X6E1-8
7	027-202-260, 370	LLA 87-10, rec. I-14-83
8	027-202-070	V 91-187
9	027-202-230 thru 360	SMJ 95-0001, 12-31-97 (Note: Conservation Easement!) -
10	027-202-370, 380	SMN 98-0001, 6-17-99 - noted below map to right ---->



- c. Within the conservation easement, only structures for utilities, storm drainage or erosion control measures shall be allowed. No living trees shall be removed from the conservation easement except in conformance with Condition No. 15 or where they are a threat to life, property, drainage swales, underground pipes, utility lines and grazing animals shall be allowed. These restrictions shall be recorded for each parcel which includes land within the scenic easement.
- f. New construction on all lots shall be limited to the Maximum Tree Removal and Building Footprints for one-story Ranch Style and Non-Ranch Style Residences, and Maximum Allowable Footprints as represented in the TABLE "MAXIMUM TREE REMOVAL FOR HOUSES BY LOT" as presented by staff at the August 20, 1996 public hearing before the Board of Supervisors, with the exception that the Maximum Proposed and Maximum Allowable Footprints for both Non-Ranch Style and one-story Ranch Style residences on Lots 10, 11 and 12 shall be 2,500 sq. ft. with the reduction of the respective building envelopes on each lot to be made to the extent possible from the rear of the lots.

LANDS OF CITY & COUNTY OF SAN FRANCISCO

BK. 93
5
RM



27-20



Book-27, pg. 5

Book-27, pg. 5

Book-27, pg. 21

Book-27, pg. 23

Book-27, pg. 24

- △ PARCEL MAP VOL. 71/60-61
- △ LA STRADA TRACT RSM 128/35-36
- △ PARCEL MAP VOL 67/86-87
- △ BURLINGAME HILLS NO. 7 RSM 102/76
- △ PARCEL MAP VOL 20/30
- △ SKYVIEW TERRACE RSM 44/25

TOWN OF HILLSBOROUGH
BURLINGAME SCHOOL DISTRICT

COUNTY OF SAN MATEO CALIF.