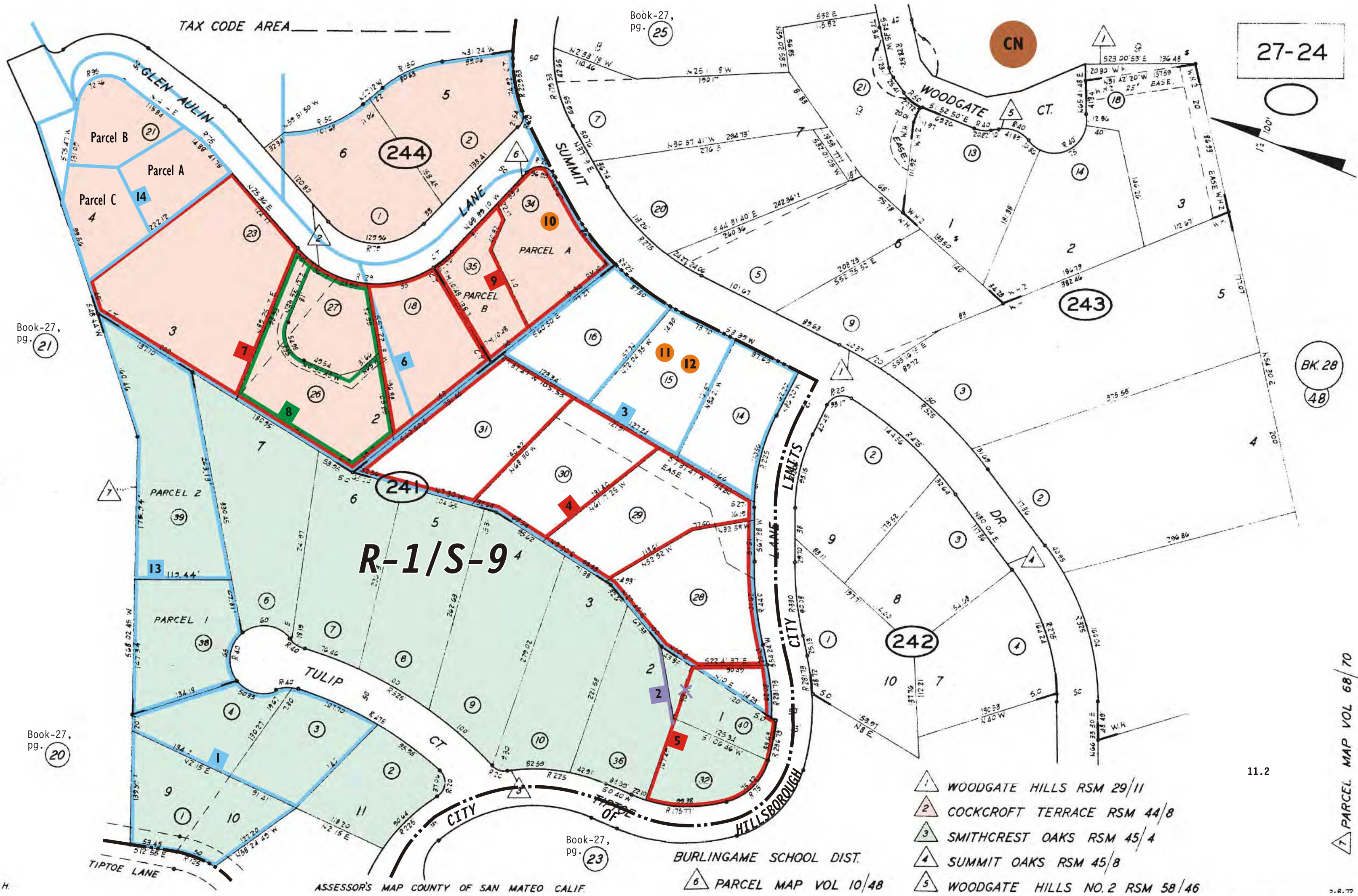


REFERENCES AND NOTES

Ref. No.	APN.	Notes	Ref. No.	APN.	Notes
1	027-241-010, 030, 040	X6E-2061			
2	027-241-360	LLA 80-11			
3	027-241-140, 150, 160, 280, 290	X6E-1569			
	300, 310, ptn. 400				
4	027-241-280 thru 310	X6E-2280			
5	027-241-320, ptn. 400	X6E-2327			
6	027-241-180, 210, 230, 260, 270,	X6E-1394			
	340, 350				
	027-244-010, 020				
	027-251-120, 130, 140				
7	027-241-180, 230, 260, 270	X6E-1978			
8	027-241-260, 270	X6E-2344			
9	027-241-340, 350	X6E-3057			
10	027-241-340	VAR 1525			
11	027-241-150	V90-67			
12	027-241-150	V91-166			
13	027-241-050	SMN 93-0001, 11-16-95			
14	027-241-210	PLN 2014-00404; Subdivision Map Recorded 5/13/16; Records, BK 82; pp79-80			
		New Parcels: Parcel A = 027-241-430; Parcel B = 027-241-440;			
		Parcel C = 027-241-450			



TAX CODE AREA

Book-27, pg. 25

Book-27, pg. 21

Book-27, pg. 20

Book-27, pg. 23

27-24

CN

R-1/S-9

- 1 WOODGATE HILLS RSM 29/11
- 2 COCKCROFT TERRACE RSM 44/8
- 3 SMITHCREST OAKS RSM 45/4
- 4 SUMMIT OAKS RSM 45/8
- 5 WOODGATE HILLS NO.2 RSM 58/46

7 PARCEL MAP VOL 68/70

J.H.

ASSESSOR'S MAP COUNTY OF SAN MATEO CALIF.

BURLINGAME SCHOOL DIST.

11.2