

Book-36
pg. 12



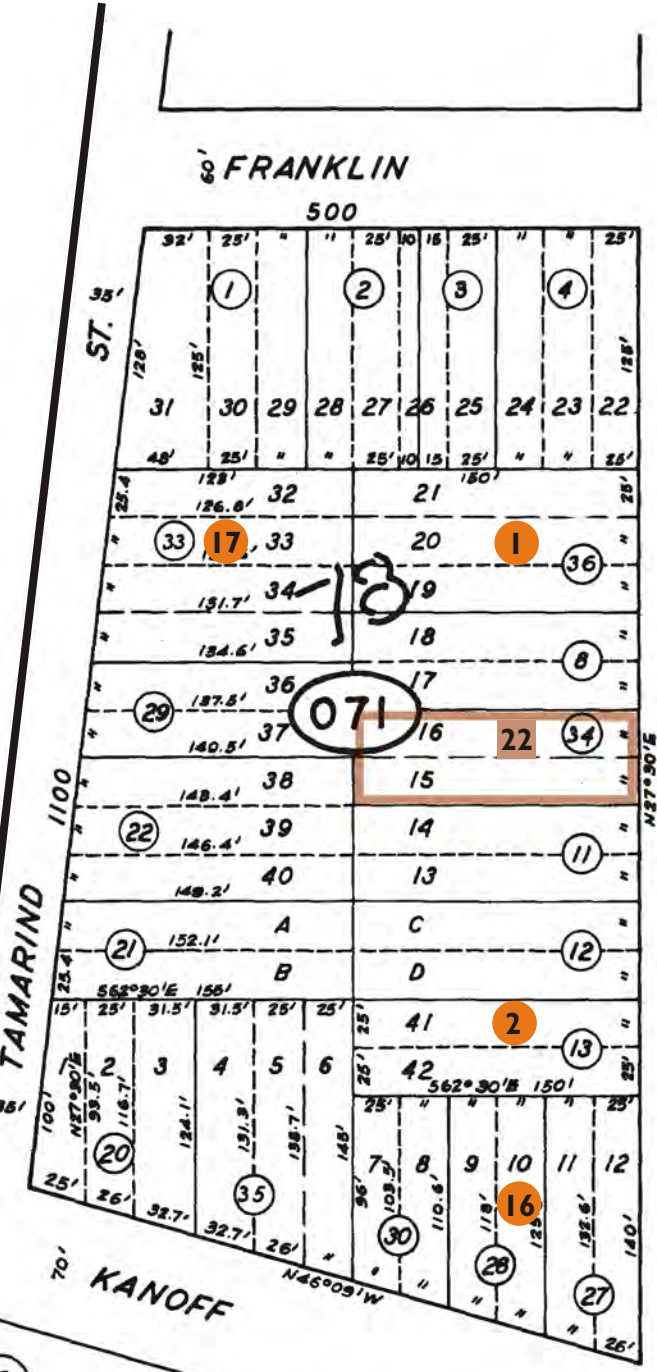
Book-36
pg. 15

ALL CD 36-7

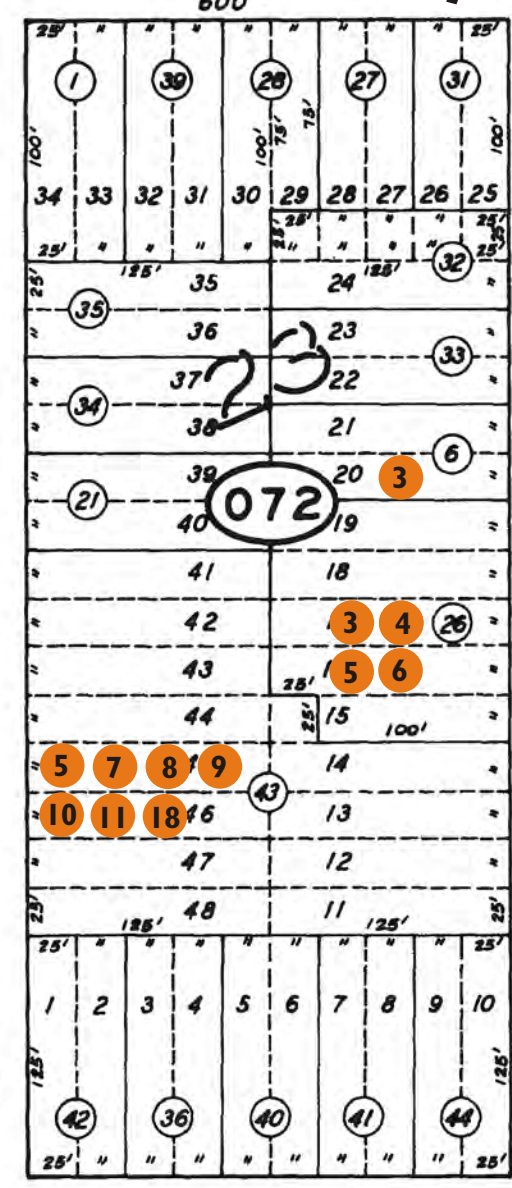
R-1/S-17/DR

PAD

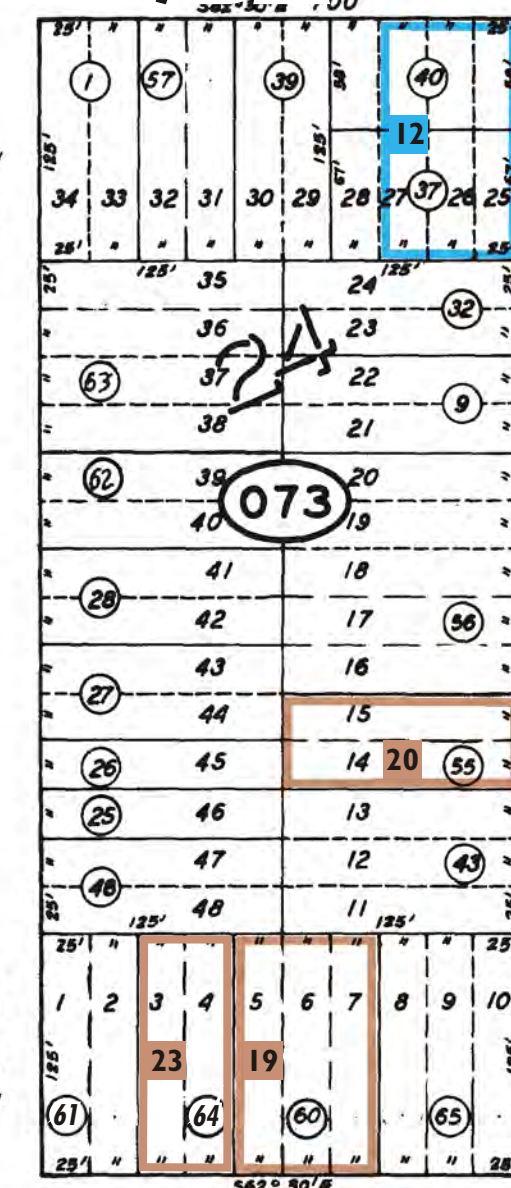
Book-36
pg. 32



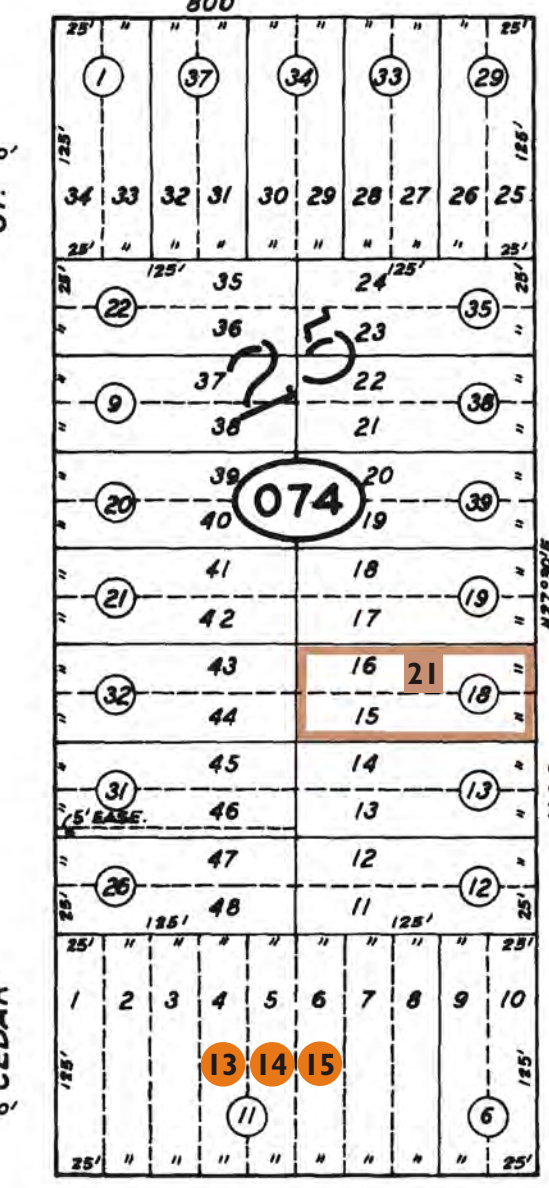
ST. 6'



ST. 6'

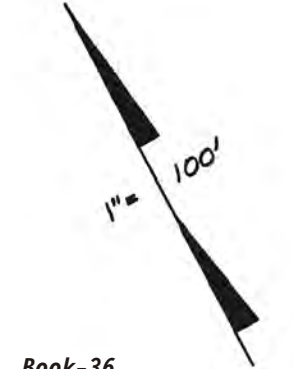


ST. 6'



ST. 8'

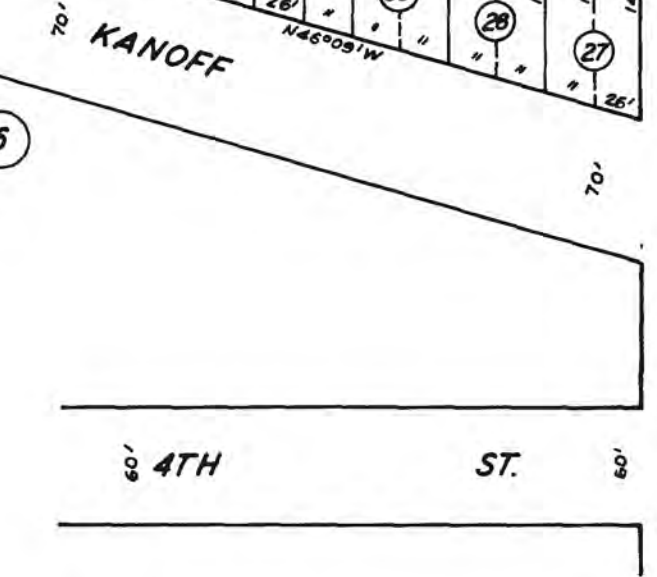
80'



Book-36
pg. 8

DATE

Book-36, pg. 6



ACACIA

GEORGE

BIRCH

Book-36
pg. 10

CEDAR

ST. 8'

9.2