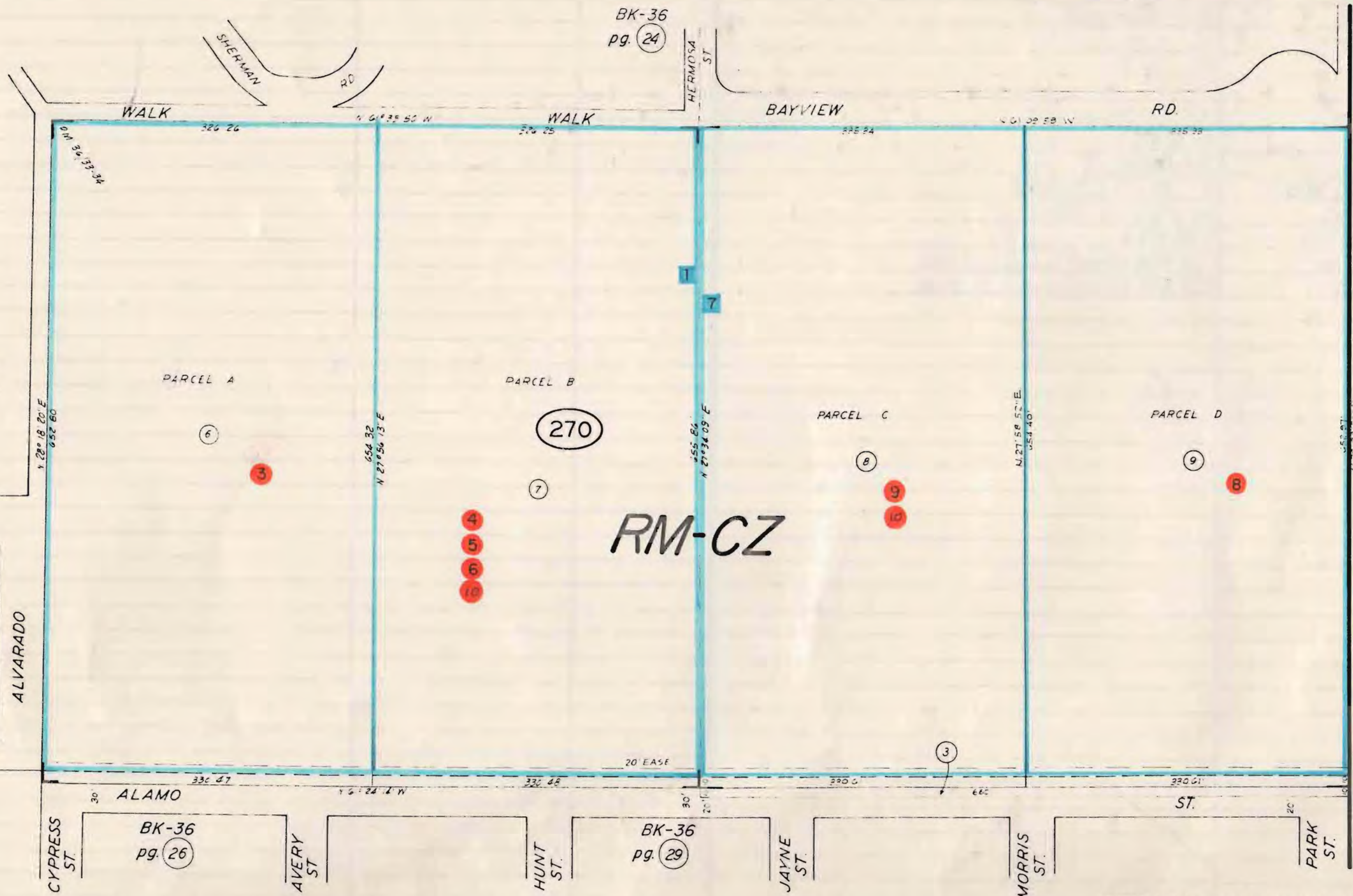




AG EX CZ APJ SH HZ

ALL CD 36-27



RM-CZ

PAD

270

ALAMO

ST.

BK-36 pg. 26

BK-36 pg. 29

HALF MOON BAY COLONY RSM D, 5

△ PARCEL MAP VOL 36/33-34

△ PARCEL MAP VOL 45/35-36