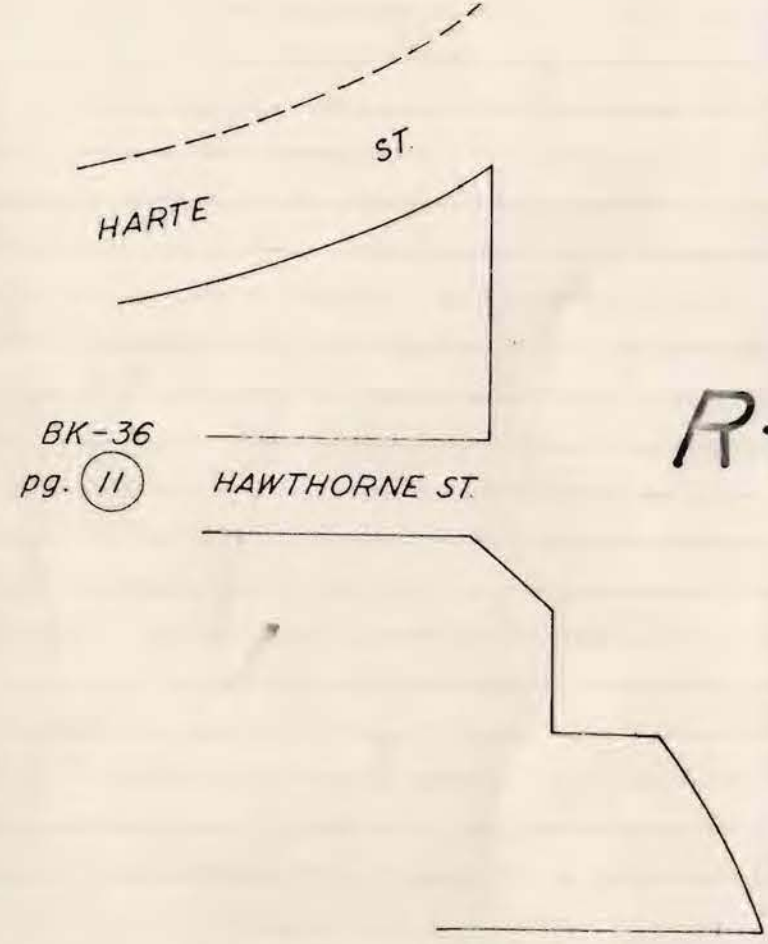
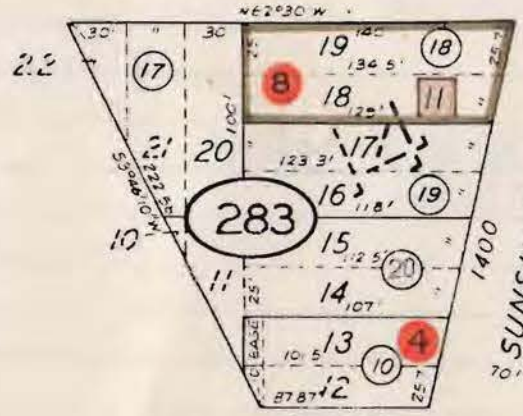
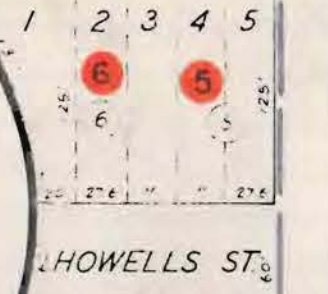
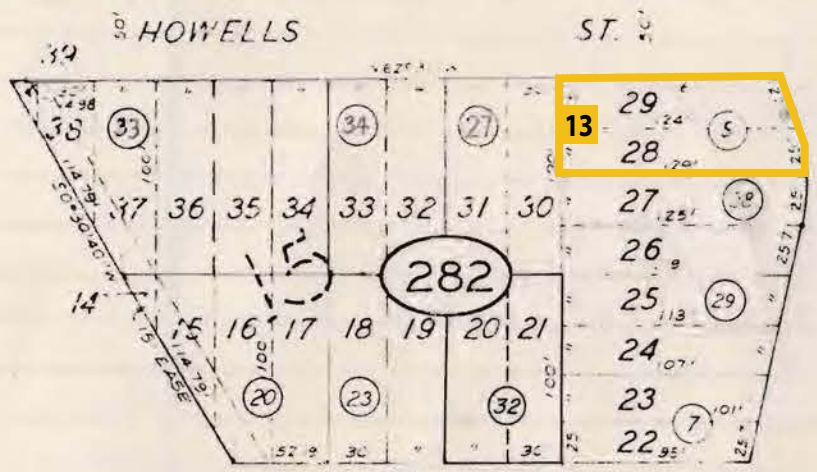
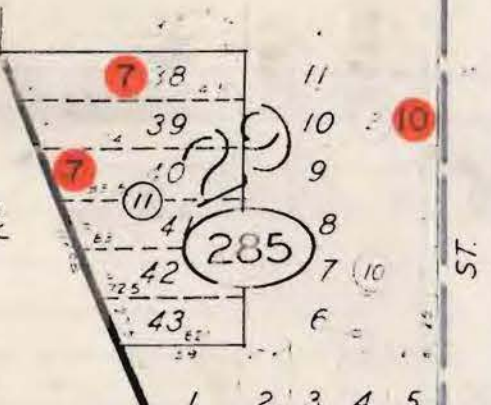
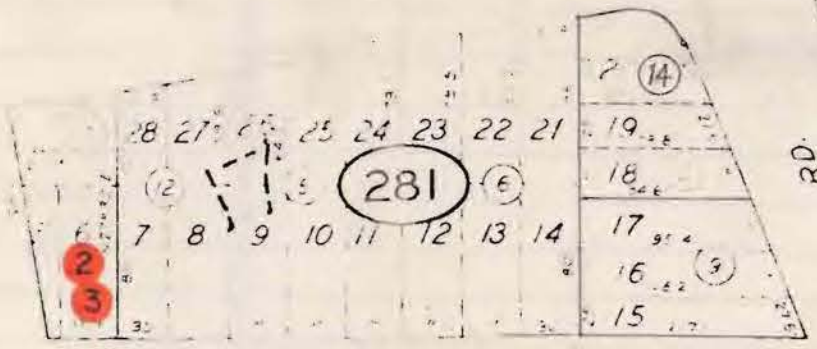


REFERENCES AND NOTES

Ref. No.	A.P.N.	Notes	Ref. No.	A.P.N.	Notes
1	036-28	CDP 85-64, Devils slide, by Pines			
2	036-281-130	MA-DA 84-98			
3	036-281-130	CDP 84-88			
	036-281-130	VA 84-13			
4	036-283-100	VA 16-76			
5	036-285-050	CDP 82-58, VA 82-7			
6	036-285-060	MA-DA 85-4			
7	036-285-110	CDP 85-42			
8	036-283-170, 180, 190	V 86-31, LOTS 16-22			
9	036-286-050	SP 87-4, CDP 87-91			
10	036-285-020	V90-139			
11	036-283-180	PLN 1999-00947, merger 1-31-00.			
12	036-284-180	PLN 2001-00360, merger 5-20-02.			
13	036-282-050	COC; PLN 2015-00132; Doc# 2015-048383; Rec 5/12/15			

CD 36 28

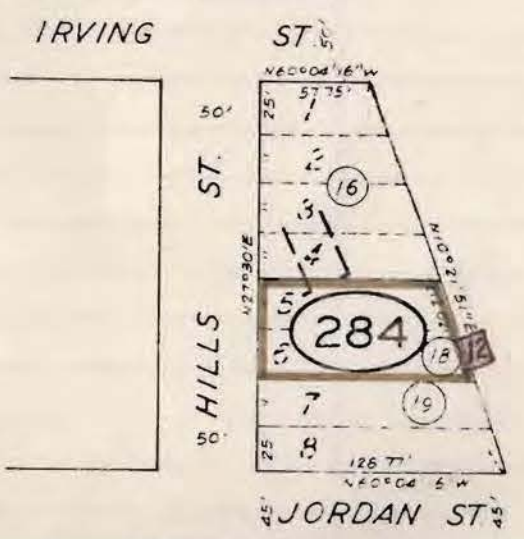


R-1/S-17/DR

RM-CZ

BK-36 pg. 11

BK-36 pg. 26



BK-37 pg. 5

U. R. B.