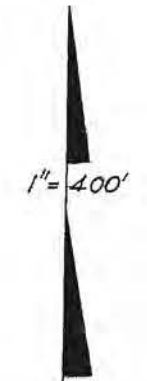


- SF
EX
- AG
EX
- CZ
APJ
- SH
- SC
All
C.S.C.
- FH
- CN
- HZ

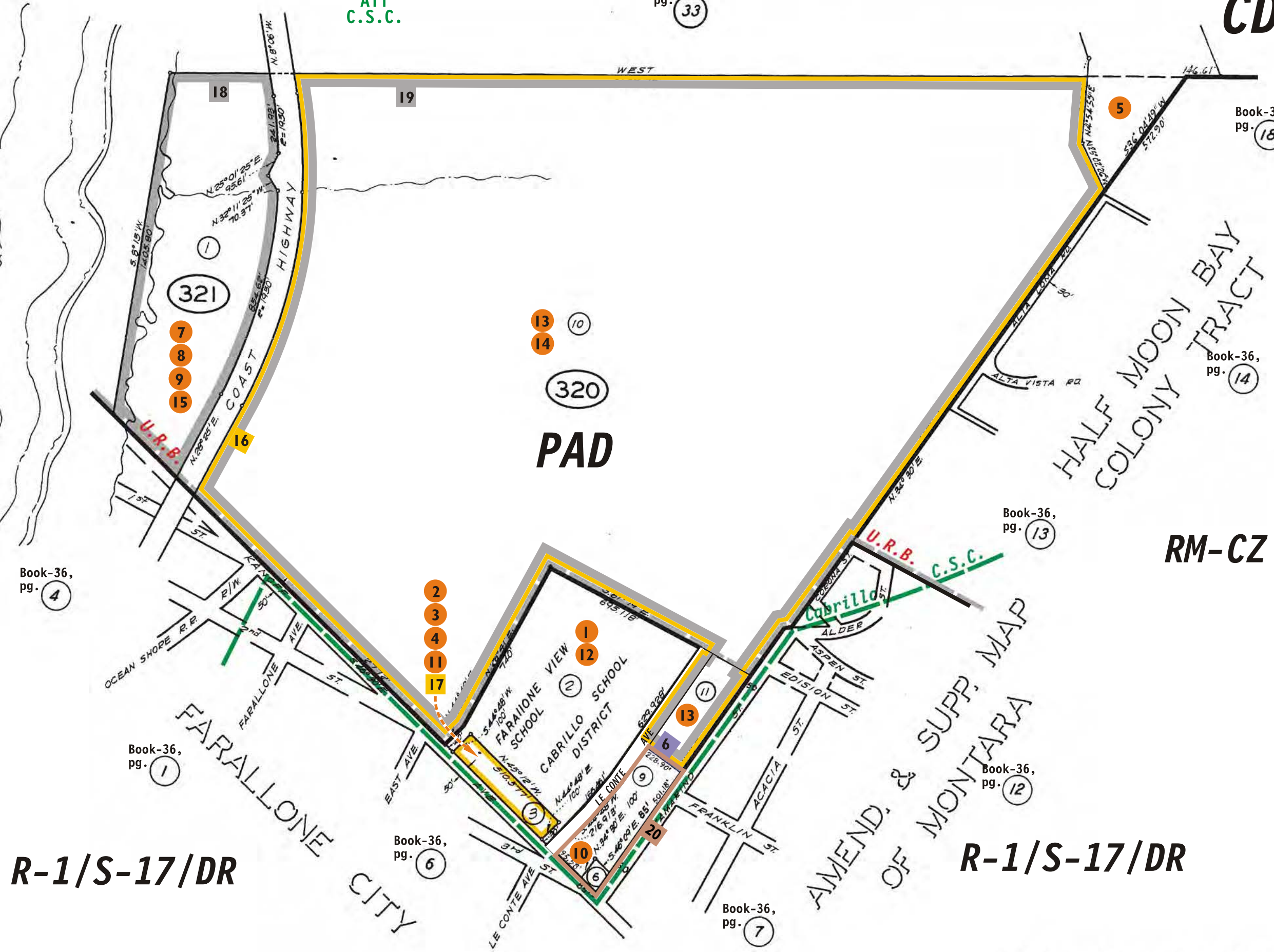
TAX CODE AREA _____

**ALL
CD**

36-32



PACIFIC OCEAN



R-1/S-17/DR

R-1/S-17/DR

PAD

RM-CZ

CABRILLO UNIFIED SCHOOL DISTRICT