

36-36



WEST
2640'

24 19

TAX CODE AREA

PACIFICA

RM

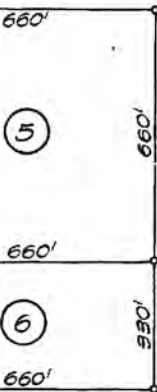
4

Book-36,
pg. 35

CITY

NORTH
1650'

OF



LIMITS

EAST

2640'

360

2

3

RM

HILDES

BK.93

3

T.4S. R.6W. T.4S. R.5W.

CITY & COUNTY OF SAN FRANCISCO

10.2
10.3

24

WEST
2640'

24 19

CABRILLO UNIFIED SCHOOL DISTRICT
LAGUNA SALADA UNION SCHOOL DISTRICT