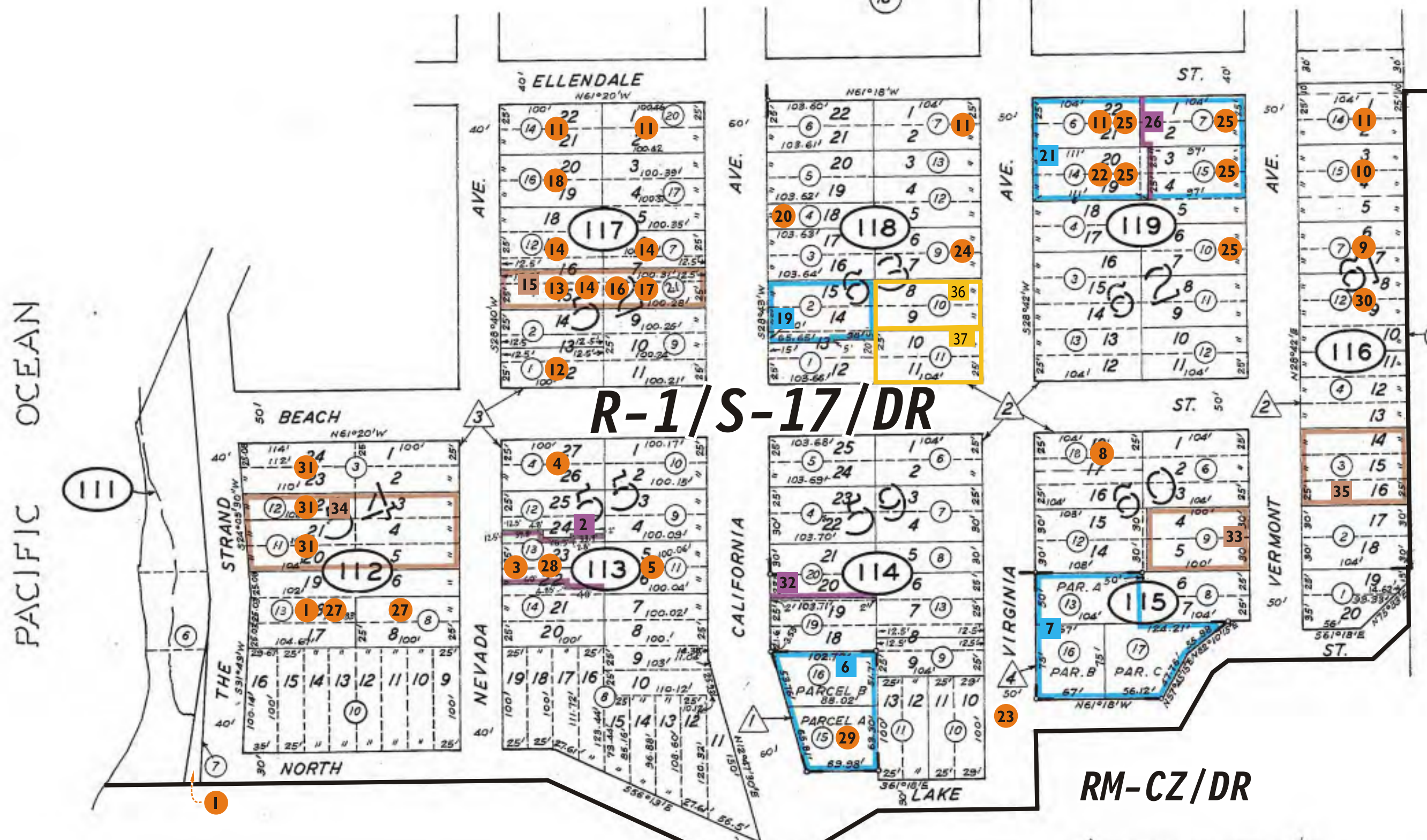


REFERENCES AND NOTES

Ref. No.	APN.	Notes	Ref. No.	APN.	Notes
1	037-111-070; 037-112-130	CDP 83-12			
2	037-113-120, 130, 140	LLA 83-6, Bk. 199, OR 289			
3	037-113-130	CDP 85-26			
4	037-113-040	VA 15-76 (cancelled?)			
5	037-113-110	CDP 83-53			
6	037-114-150, 160	X6E 3044			
7	037-115-130, 160, 170	X6E 3159			
8	037-115-180	CDP 82-46			
9	037-116-070	CDP 83-33			
10	037-116-150	CDP 83-32			
11	037-116-140; 037-117-140, 200 037-118-070; 037-119-060	Var 1623, see file for add'l parcels			
12	037-117-010	Var 1464			
13	037-117-210	VA 31-79			
14	037-117-070, 120, 210	Line dividing lots 7 & 16 established 1931(per LS)			
15	037-117-210	NM 83-3, NM 83039407			
16	037-117-210	CDP 82-72, VA 82-11			
17	037-117-210	Legal OR Vol. 1250 p.119 (EB 11-29-82)			
18	037-117-160	Var 1098 (or 1698, 1398?)			
19	037-118-020	X6E 1251			
20	037-118-040	Var 1231?			
21	037-119-060, 070, 140, 150ptn	X6E 1415, 2-24-56			
22	037-119-140	VA 7-77 denied			
23	037-114 & 115 (adjacent)	CDP 83-36, pump station			
24	037-118-090	OSP 86-8			
25	037-119-060, 070, 100, 140, 150	MA-OA 87-45, parcel line status			
26	037-119-060, 070, 140, 150	LLA 77-6, BOS Reso. # 37531, 7-27-77			
27	037-112-080, 130	CDP 87-65			
28	037-113-130	CDP 88-29			
29	037-114-150	V 88-28			
30	037-116-120	CDP 90-28			
31	037-112-030, 110, 120	MNA 91-0020			
32	037-114-190, 200	LLA 78-12			
33	037-115-090	Merger, PLN 2001-00575, 12-20-01			
34	037-112-110, 120	Merger, PLN 2003-00048, 5-08-03			
35	037-116-030	NM, PLN 2005-00288 Doc. # 2006-189807, 12-15-06			
36	037-118-100	COC; PLN2016-00329; Doc#2017-002731; Rec:1-11-17			
37	037-118-110	COC; PLN2019-00305; Doc#2020-017834; Rec:2-27-20			



Book-37 pg. 13

Book-37 pg. 20

R-1/S-17/DR

RM-CZ/DR

- 1 PARCEL MAP VOL 11/45
- 2 MOSS BEACH ADDITION NO. 1 RSM 6/10
- 3 MOSS BEACH RSM 6/9
- 4 PARCEL MAP VOL 16/2