

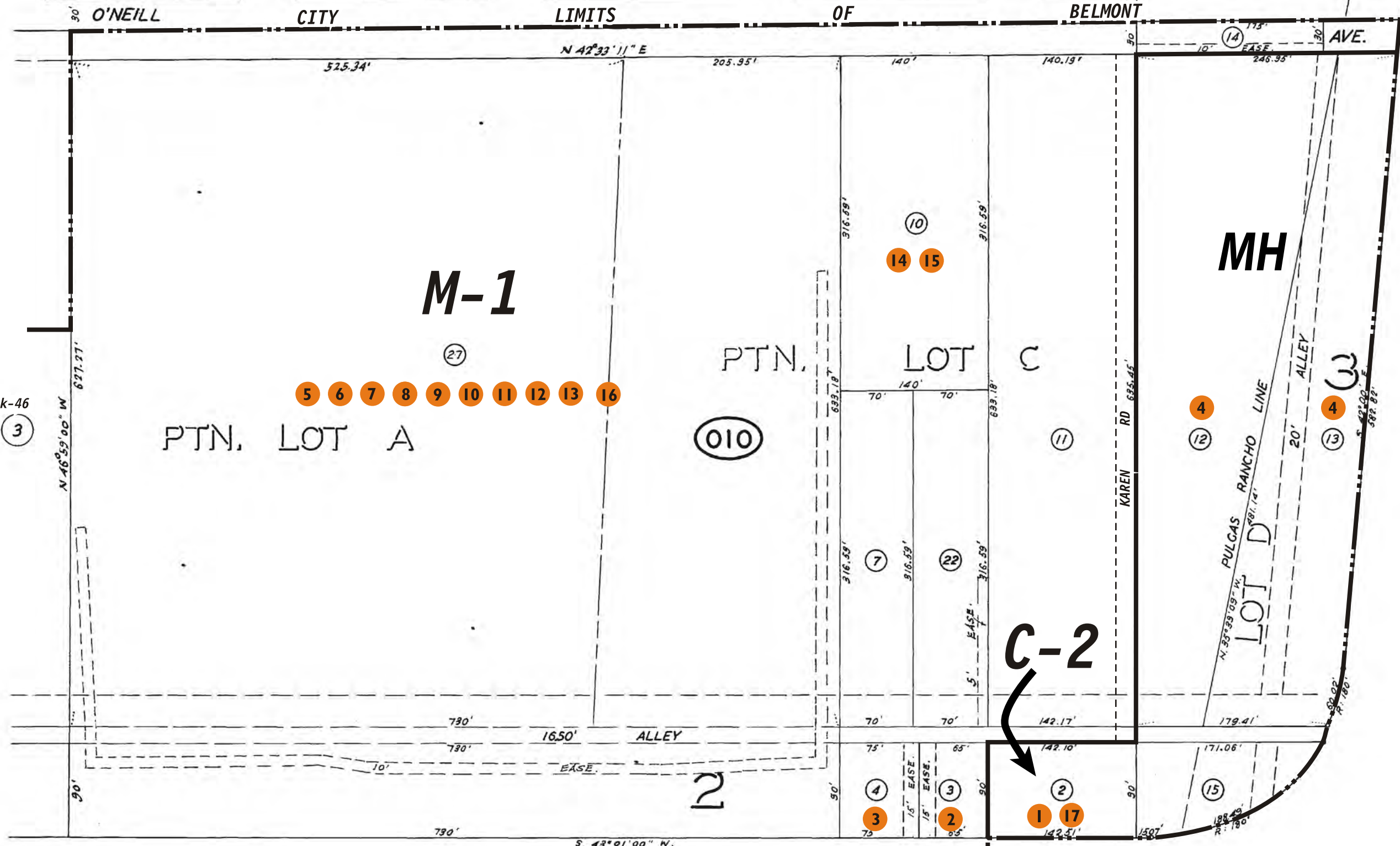
REFERENCES AND NOTES

Ref. No.	A.P.N.	Notes	Ref. No.	A.P.N.	Notes
1	046-010-020	Var 656			
2	046-010-030	Var 1172			
3	046-010-040	Var 1098			
4	046-010-120, 130	Belmont Trailer Park			
5	046-010-270	ZA X91-07-6			
6	046-010-270	UP 1724			
7	046-010-270	UP 37-76, sign			
8	046-010-270	UP 16-77			
9	046-010-270	No building permit allowed which permits non-emergency access through Belmont residential area, per Belmont P.C. See letter "in file" (Coca Cola Co.)			
10	046-010-270	Notify of building permit application: Homeview Homeowners, Dan Nestor, 1200 Hudson St., Belmont 94002			
11	046-010-270	SMN 82-13, Bolton, Cond. app. 12/3/82, ext. 4/24/85 to 12/85			
12	046-010-270	UP 18-77			
13	046-010-270	NM 85-2			
14	046-010-100	SMN 86-21			
15	046-010-100	V 87-39			
16	046-010-270	MA-OA 87-84			
17	046-010-020	MA-OA 88-3			



HILLER ST. HOMEVIEW IRWIN ST. BK.40 34 JUDSON ST. NO. 1 KEDITH ST.

TAX CODE AREA  
 CN ALUC FH  
 46-1



Book-46  
pg. 3

Book-46  
pg. 2

ML

ASSESSOR'S MAP COUNTY OF SAN MATEO, CALIF.

PORT OF SAN FRANCISCO RSM 16/26-28

5-14-82