

REFERENCES AND NOTES

Ref. No.	AP.N.	Notes	Ref. No.	AP.N.	Notes
1	047-282-010, 100	X6E-77			
2	047-282-010	Var 1570			
3	047-283-010	UP 15-77			
4	047-283-010	UP 14-78			
5	047-283-010	VA 85-21, CDP 85-88			
6	047-283-050, 060, 070	X6E-450			
7	047-283-050, 060, 070	X6E-2165			
8	047-285-030	Var 1038			
9	047-285-370 ptn.	Var 1595, lot 9			
10	047-285-370 ptn.	ZA-V-46, lot 9			} Lot not developed; VA cases not relevant
11	047-285-370 ptn.	ZA-V-2-75, lot 9			
12	047-286-170	CDP 85-69, 1 of 20 well locations			
13	047-287-030	Var 1568			
14	047-287-040	Var 1288, Approved 4875 sq.ft.			
15	047-287-140, 150	Var X7E-1184			
16	047-288-250	Var 1441, lots 21 & 22			
17	047-288-070	Var 1271			
18	047-288-220, 240	LLA 82-3, MIS 96-0028, 6-24-96			
19	047-288-240	VA 83-12, CDP 83-55, MIS 96-0028, 6-24-96			
20	047-288-240	V 84-42, MIS 96-0028, 6-24-96			
21	047-288-190	Var 1687			
22	047-288-080	OSP 86-12			
23	047-284-286	MA-OA 87-9, CDP Exemption, Coastal Water District			
	047-21, 047-24, 047-27				
24	047-286-010	V 88-4			
25	047-284-020	V89-82			
26	047-287-090	V89-113			
27	047-288-070, 080	V90-201			
28	047-284-110 ptn.	V90-208 Note: Applies only to lots 2 & 3			
29	047-285-030	Var 91-0005, CDP 91-0037, DSR 91-0051			
30	047-287-260	MIS 94-0015, 9-26-94			
31	047-284-110	MIS 94-0014, 9-26-94			
32	047-285-380	MIS 96-0026, 3-29-96			
33	047-288-240	MIS 96-0028, 6-24-96			
34	047-285-390	MIS 98-0006, 6-16-98			
35	047-288-250	MIS 90-0010, 6-30-98			
36	047-288-180	Merger PLN 1999-00760, 10-26-99			
37	047-281-120, 150, 160	Merger PLN 2001-00287, 9-6-01 Revised LLA doc; Rec 11-1-01			
38	047-285-120	Merger PLN 2007-00268, 7-17-07 NM # 2007-107670			
39	047-285-370	Merger PLN 2010-00259, Doc. # 2010-106742, 9-16-10 NM			
40	047-285-370	COC (Type A), confirm legality of 3 lots. PLN 2010-00259, Doc. # 2010-106741, 9-16-10 CC			

R-3/S-3/DR

Book-47
pg. 27

TAX CODE AREA

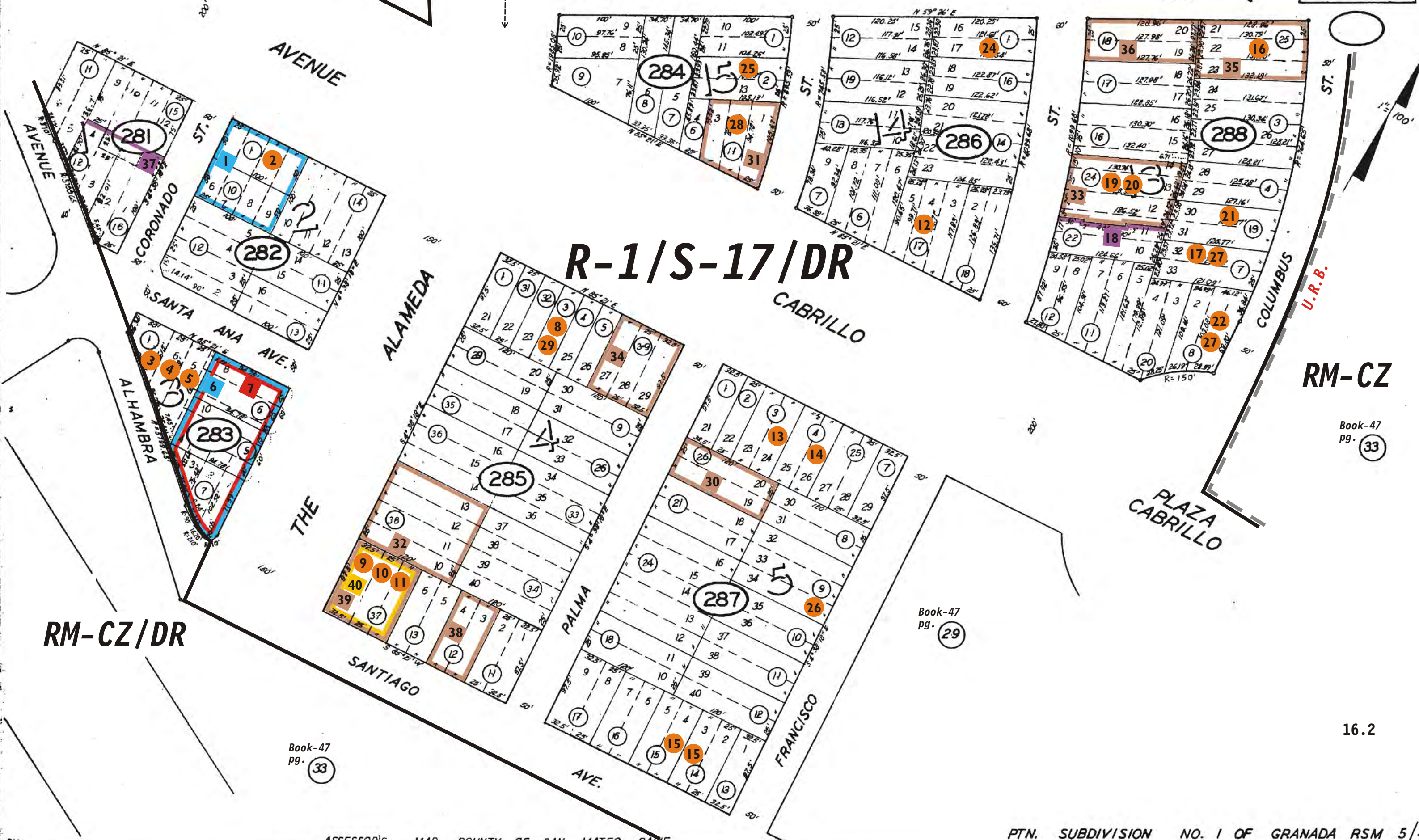
SF EX AG EX SH CN

ALL-CD

47-28

SANTA MARIA

AVE.



R-1/S-17/DR

RM-CZ

RM-CZ/DR

Book-47
pg. 33

Book-47
pg. 29

Book-47
pg. 33

16.2