

REFERENCES AND NOTES

Ref. No.	AP.N.	Notes	Ref. No.	AP.N.	Notes
1	047-312-020	X6E-2909			
2	047-313-010	ZR 84-1			
3	047-313-080,040	CDP 83-20, location ?			
	047-390-020				
4	047-313-030	CDP 81-80			
5	047-313-040, 070	UP 1353			
6	047-311-030, 050,060,070	MA-OA 87-21			
	047-312-010, 030,040				
	047-313-080				
7	047-311-030	V 87-1			
8	047-311-040	CDP 87-81, UP 87-26			
9	047-311-030, 050,060,070	UP 87-29, CDP 87-100, SMN 87-17			
	047-312-010, 030,040				
	047-313-080				
10	047-311-020, 050,060,070	V 87-71			
	047-312-010, 030,040				
11	047-311-030, 050,060,070	V 88-50			
	047-312-010, 030,040				
	047-313-080				
12	047-312-010, 030,040	V 88-53			
13	047-311-030, 050,060,070	CDP 88-84			
	047-312-010, 030,040				
14	047-311-030, 050,060,070	MNA 91-0032			
	047-312-010, 030,040				
	047-313-090				
15	047-311-030, 050,060,070	ZR 89-2, 3-12-91. Princeton			
	047-312-010, 030,040				
16	047-311-060,070	PLN 1999-00442, (3) CoCs, type A, 7-6-00.			
	047-312-040				

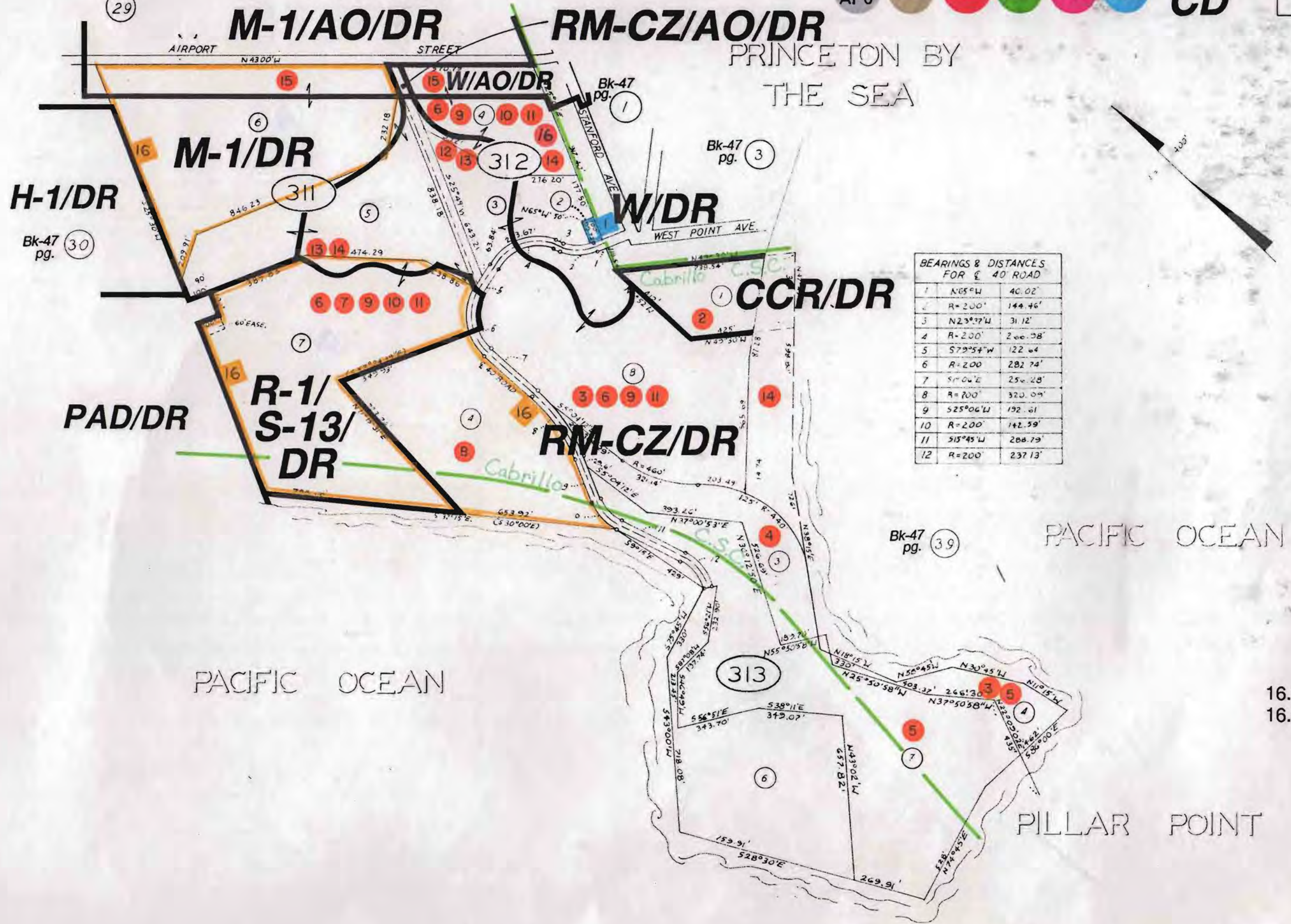
HALF MOON BAY
AIRPORT

TAX CODE AREA -----



**ALL
CD**

47-31



PACIFIC OCEAN

PACIFIC OCEAN

16.1
16.6

PILLAR POINT