

REFERENCES AND NOTES

Ref. No.	A.P.N.	Notes	Ref. No.	A.P.N.	Notes
1	047-340-020, 290, 310	THP 82-12			
2	047-340-040	GP 84-18			
3	047-340-290, 310	LLA 85-2, accepted by P.C. letter 1-24-94.			
4	047-340-290, 310	UP 85-6			
5	047-340-290, 310	UP 81-28			
6	047-340-290, 310	EMN 81-32, Cond. approval			
7	047-340-290, 310	GP 82-3			
8	047-340-270	UP 82-16, CDP 82-14: Renewal '86			
9	047-340-280	Ag. Pres., Gabrielli, AP 66-29			
10	047-340-280	10' street widening to be taken this side 6 th Ave., DPW			
11	047-340-290, 310	MA-0A 85-113			
12	047-340-280	CDP 85-19			
13	047-340-010, 020	SMP 83-2, CDP 83-37			
14	047-340-010, 020, 040 290, 310	CDP 81-66, UP 81-27, UP 81-28, UP 81-29, UP 81-30 See UP 81-28 controller replacement.			
15	047-340-280 047-330-010	25' of Cortez Ave. remains a part of this parcel. Was never dedicated per P. Bentley, D.P.W.			
16	047-340-020, 290, 310 037-320-280, 020, 310	PLN 2002-00488, LLA 3-13-03.			

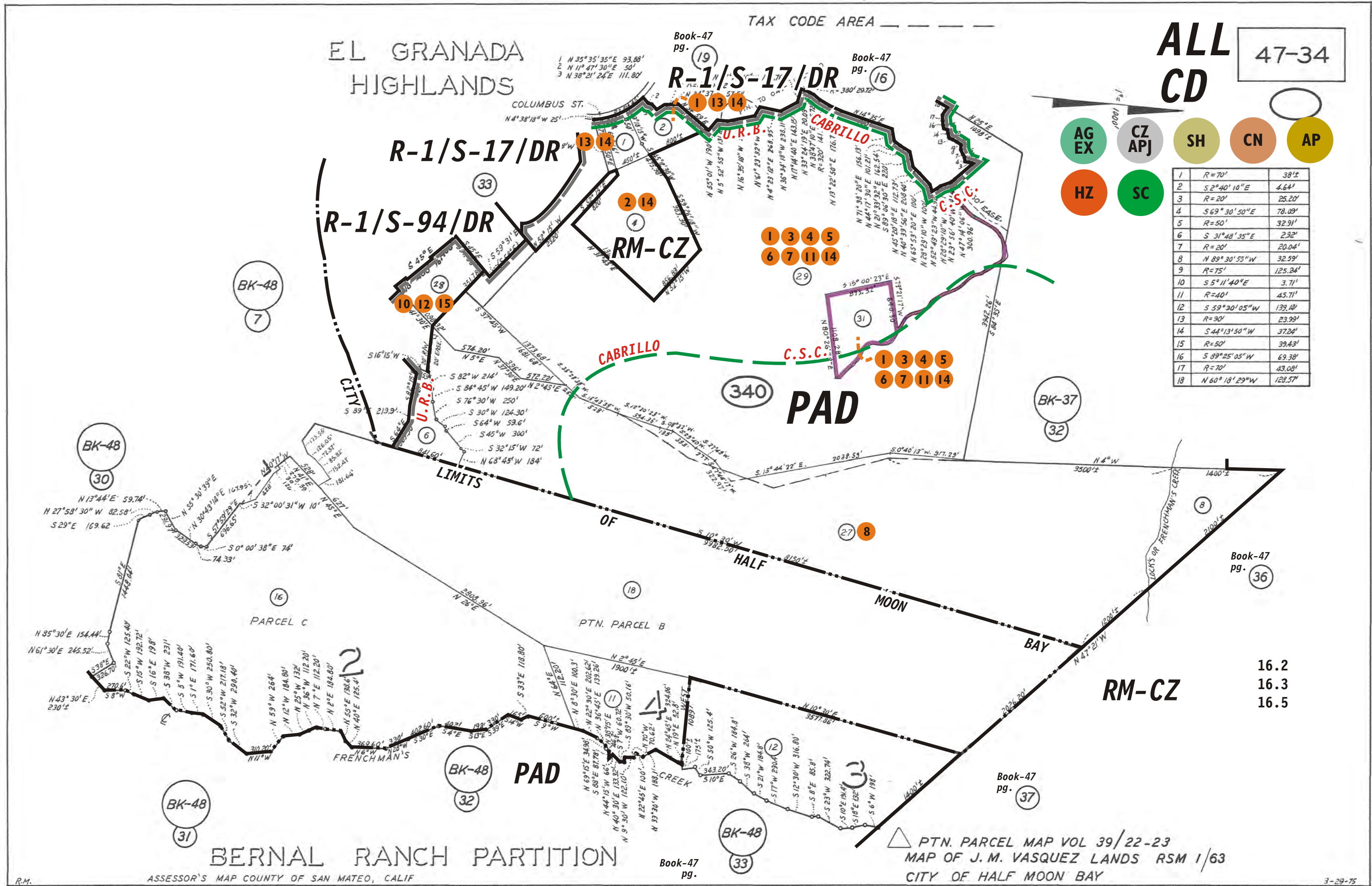
EL GRANADA
HIGHLANDS

TAX CODE AREA

ALL
CD 47-34

AG EX CZ APJ SH CN AP HZ SC

1	R=70'	38'±
2	S 2°40'10"E	4.64'
3	R=20'	25.20'
4	S 69°30'50"E	78.09'
5	R=50'	32.91'
6	S 31°48'35"E	2.92'
7	R=20'	20.04'
8	N 89°30'55"W	32.59'
9	R=75'	125.24'
10	S 5°11'40"E	3.71'
11	R=40'	45.71'
12	S 59°30'05"W	139.14'
13	R=90'	23.99'
14	S 44°13'50"W	37.24'
15	R=50'	39.43'
16	S 89°25'05"W	69.38'
17	R=70'	43.08'
18	N 60°18'29"W	128.57'



BK-48
7

BK-48
30

16

BK-48
31

BK-48
32

BK-48
33

BK-37
32

Book-47
pg. 36

Book-47
pg. 37

16.2
16.3
16.5

BERNAL RANCH PARTITION

ASSESSOR'S MAP COUNTY OF SAN MATEO, CALIF

Book-47
pg.

PTN. PARCEL MAP VOL 39/22-23
MAP OF J. M. VASQUEZ LANDS RSM 1/63
CITY OF HALF MOON BAY