

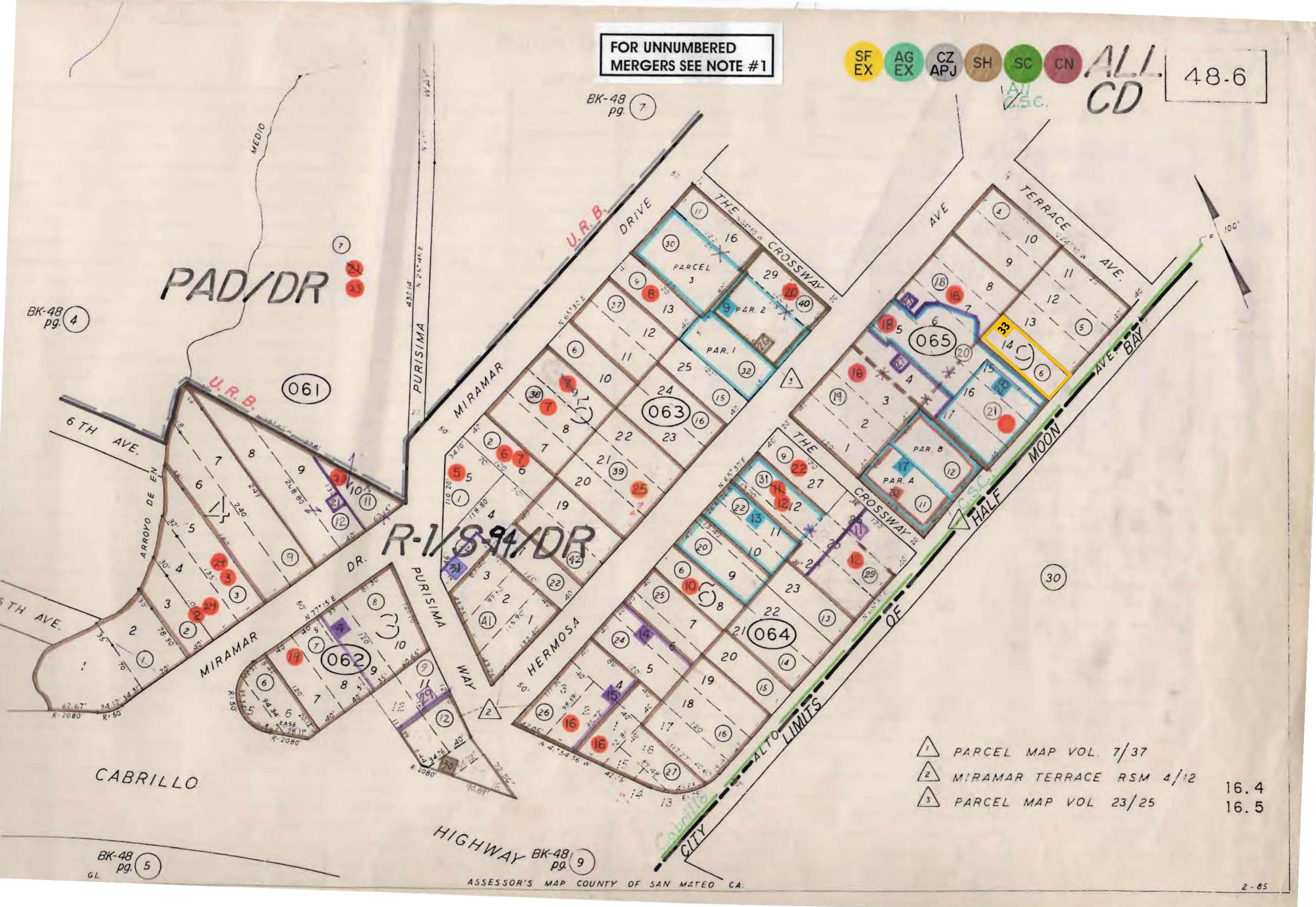
FOR UNNUMBERED MERGERS SEE NOTE #1

SF EX AG EX CZ APJ SH SC CN **ALI-CD** 48.6

BK-48 pg. 4

BK-48 pg. 7

BK-48 pg. 5



- △ 1 PARCEL MAP VOL. 7/37
- △ 2 MIRAMAR TERRACE RSM 4/12 16.4
- △ 3 PARCEL MAP VOL 23/25 16.5