

REFERENCES AND NOTES

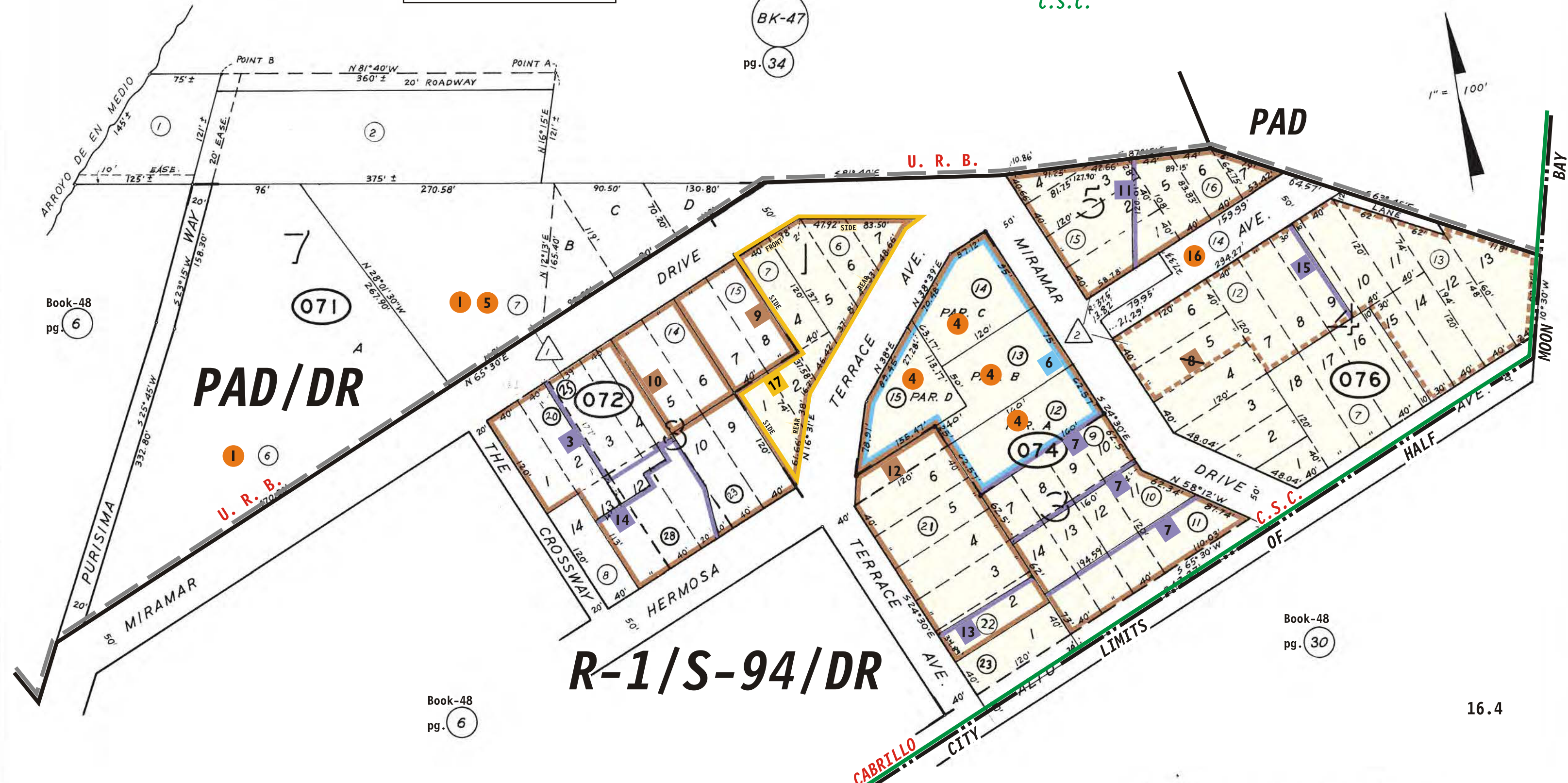
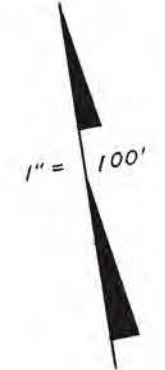
Ref. No.	A.P.N.	Notes	Ref. No.	A.P.N.	Notes
1	048-071-N&D, 070	LLA? shown in red on hang map, no source or measurements			
2	048-07	LLP Mergers			
3	048-072-200,250,280	LLA 83-4, 7-20-83			
4	048-074-120 thru 150	MA-OA 90-107			
5	048-071-070	MA-OA 90-127			
6	048-074-120 thru 150	SMN91-0017, 2-6-96, CDP91-0053, SIE 91-0002, LLA92-0001 (see note #7.)			
7	048-074-090 thru 150	LLA92-0001, 8-24-92. See SMN91-0017			
8	048-076-120,130	MIS 96-0019, 3-12-96, superceded LLA, PLN'07-153			
9	048-072-150	MIS 97-0001, 2-21-97			
10	048-072-140	MIS 98-0017, 11-19-98.			
11	048-076-150,160	PLN 1999-00273, 10-19-99, LLA			
12	048-074-210, 220	PLN 2000-00422, Merger, 8-16-00. Revised 8-17-2000			
13	048-074-210, 220	PLN 2001-00587, LLA 5-13-02.			
14	048-072-080, 200, 230, 250, 280	LLA, PLN 2003-00126 # 2003-261935 CONF 9-15-03			
15	048-076-110, 130	LLA, PLN 2007-00153 # 2007-127571 CONF 8-24-07			
16	048-076-140	Parcel legality in question.			
17	048-072-060, 070	COC; PLN2015-00444; Doc# 2015-123090; 11/23/15			

SF EX
AG EX
CZ APJ
SC
ALL C.S.C.
CN
SH

ALL CD 48-7

FOR UNNUMBERED MERGERS SEE NOTE #2

BK-47
pg. 34



Book-48
pg. 6

071

PAD/DR

R-1/S-94/DR

Book-48
pg. 6

Book-48
pg. 30

16.4

- △ PARCEL MAP VOL 68/97-98
- ① MIRAMAR TERRACE RSM 4/12
- ② SUB. OF BLOCK 10 MIRAMAR TERRACE RSM 5/19