

REFERENCES AND NOTES

Ref. No.	A.P.N.	Notes	Ref. No.	A.P.N.	Notes
1	051-151-050	Var 259			
2	051-151-290,300,310	SMN 78-42			
3	051-151-110	MA-OA 84-95			
4	051-151-110	Var 1413			
5	051-151-120	MA-OA 84-79 (Re: 2nd Unit Legalization)			
6	051-151-150	Var 247			
7	051-151-200,210,220,230	X6E-2240			
8	051-151-220	Var 1647			
9	051-151-230	Var 1648			
10	051-151-240,250	SMN 76-39			
11	051-151-260,270	X6E-115			
12	051-152-010,020	X6E-1005			
13	051-152-090,220,240	X6E-505			
	051-161-100,110				
14	051-152-110,220,240	X6E-1679			
15	051-152-130,140	X6E-1757			
16	051-152-220,240	X6E-2375			
	051-161-100,110				
17	051-152-230	UP 2088			
18	051-152-230	UP 2214			
19	051-152-230	ZA-UP 29-75			
20	051-152-270	MA-OA 83-55			
21	051-151-270	V 89-260			
22	051-152-160	LLA, Final 6-12-37			
23	051-152-140	V 90-42			
24	051-152-040	V 90-101			
25	051-152-050	MA-OA 90-52			
26	Palomar Park	ZA 90-3, ZA 90-7, ZA 90-8, ZR 90-2			
27	051-151-120	DSR91-0066			
28	051-151-330+B.R.Ct.	LLA 93-0006, 10-28-93			
	051-032-150				

Bk-51 pg. 18

TAX CODE AREA

CN

FH

51-15

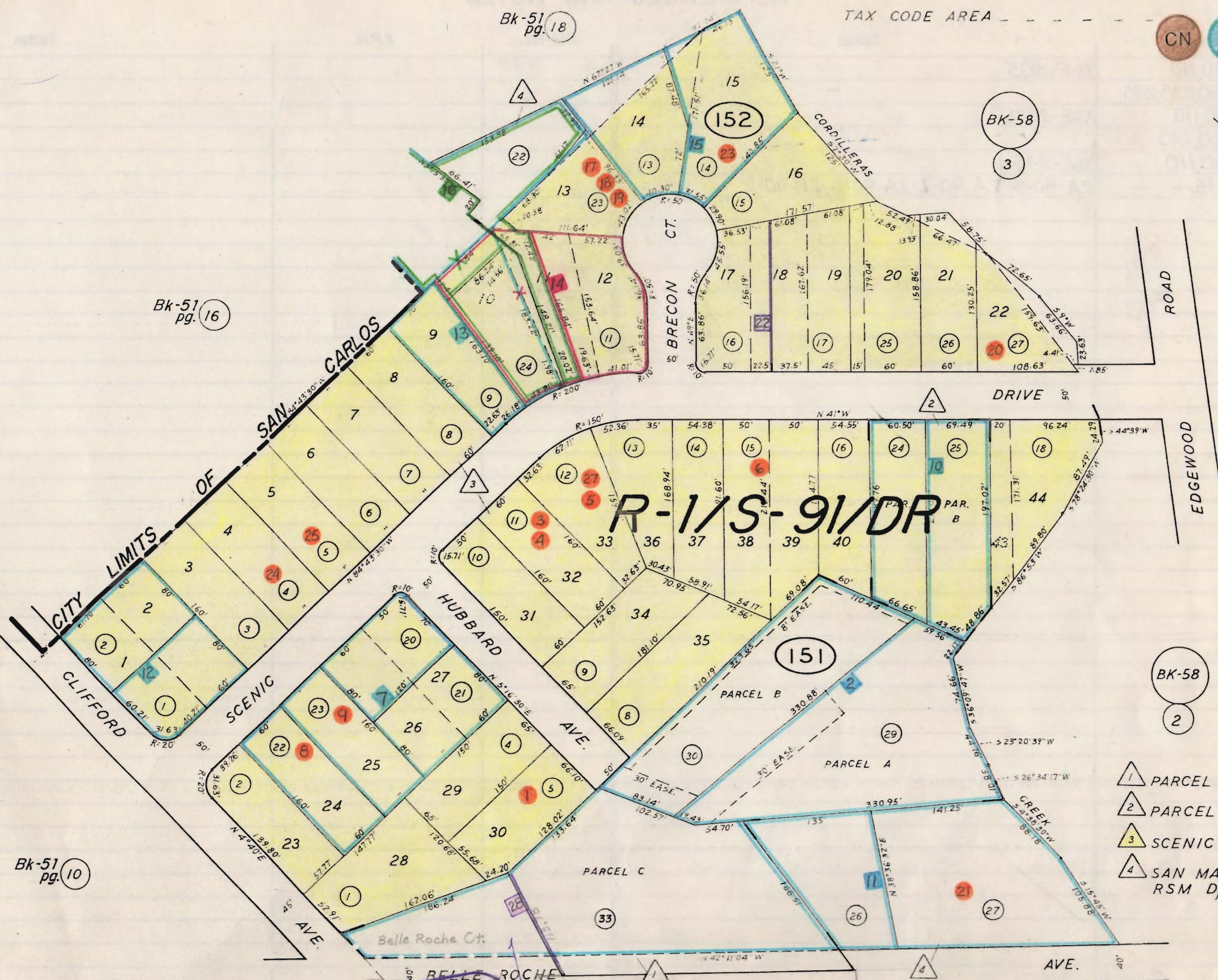
26

BK-58

3

Bk-51 pg. 16

1" = 100'



BK-58

2

- 1 PARCEL MAP VOL. 49/27-28
- 2 PARCEL MAP VOL. 33/42
- 3 SCENIC HEIGHTS RSM 13/56
- 4 SAN MATEO LAND ASSOC. RSM D/25

Bk-51 pg. 10

19.5

Bk-51 pg. 4

R-1/S-101/DR