

REFERENCES AND NOTES

Ref. No.	A.P.N.	Notes	Ref. No.	A.P.N.	Notes
1	051-440-060,180,210,220 240 thru 280	X6E-745			
	051-461-010 thru 050	(is 060 inc.?)			
2	051-440-060	X6E-2955, disapproved, 6-20-69			
3	051-440-060	SMN 78-62			
4	051-440-060	50± road easement recorded, Vol. 5419, pg. 537			
5	051-440-120,230	X6E-1466			
6	051-440-140	SP 81-13			
7	051-440-140,170 051-450-010	X6E-356			
8	051-440-140 051-450-010,020,030,140	SMN 78-66			
	051-463-100,110	(also ptn. Hermosa Rd.)			
9	051-440-170	X6E-1907			
10	051-440-250,260,270,280	X6E-2643			
11	051-440-290,300,310	X6E-2669			
12	051-440-150 051-450-020,030,040, + ptn. 150 051-463-010,020,030, + ptns. 050,100,110 051-464-010,020, ptn. 030	X6E-1072			
13	051-440-180,190,200	LLA 88-3, 4-1-88, parcel 200 not inc. in final,			
14	051-440-160	V 89-11, setback			
15	051-440-160	V 89-19, setback			
16	051-440-060	MA-0A 89-67			
17	051-440-250,260	V 89-189			
18	051-440-140	SMN 90-15			
19	Palomar Park	ZA 90-3, ZA 90-7, ZA 90-8, ZR 90-2			
20	051-440-140	V 90-218			
21	051-440-230	V 90-258			
22	051-440-040	V 90-285			
23	051-440-140	GRD 91-0002			
24	051-440-310	DSR 91-0150			
25	051-440-140	V 91-241			
26	051-440-020	COC 96-0007, recorded 10-29-96, type A.			
27	051-440-040,050	LLA 95-0010, 12-18-97.			

51-44

TAX CODE AREA

BK-51 pg. 41

BK-51 pg. 46

BK-51 pg. 45

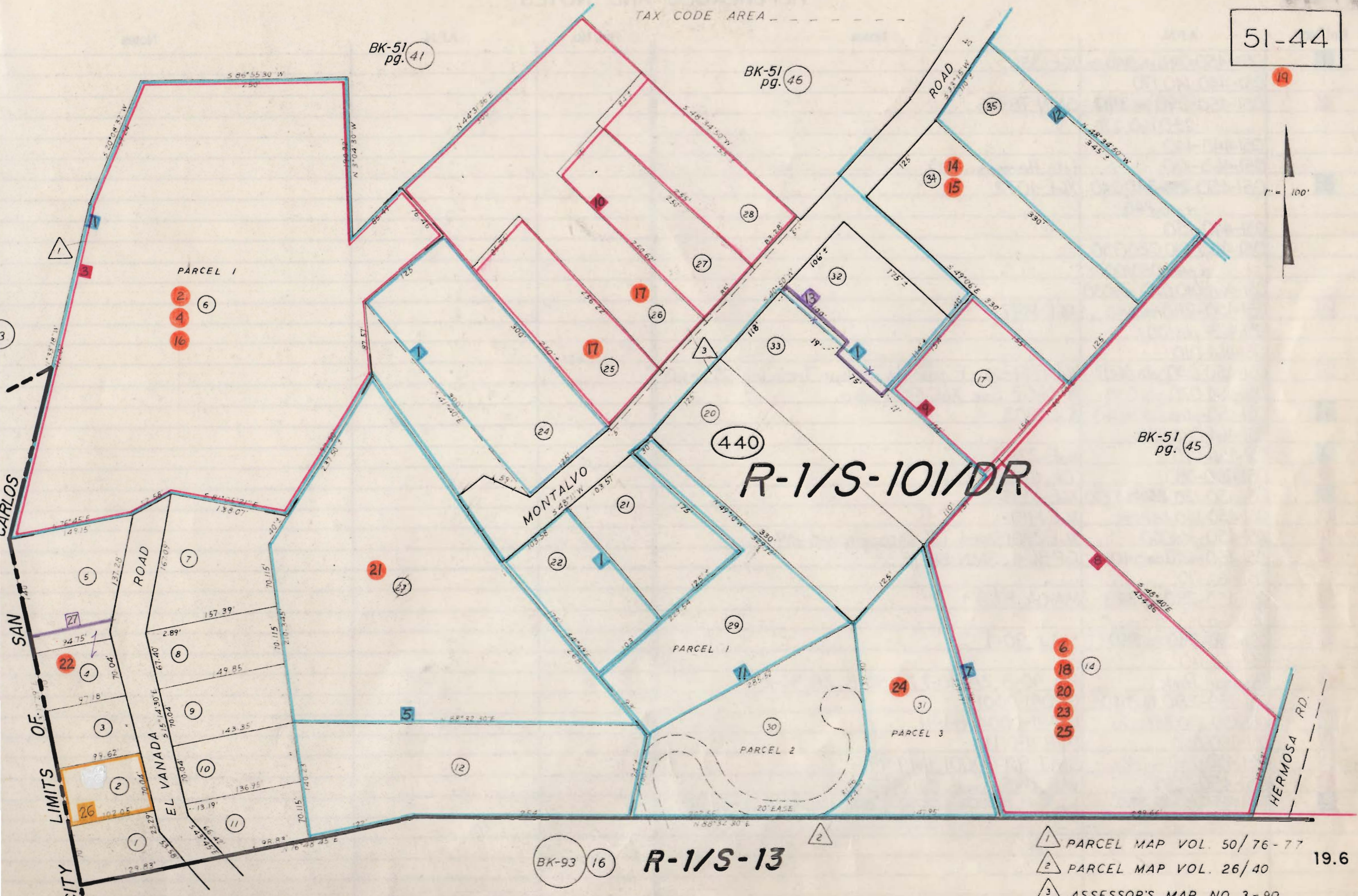
BK-93 16

R-1/S-10/DR

R-1/S-13

ASSESSOR'S MAP COUNTY OF SAN MATEO CA

1" = 100'



- △ 1 PARCEL MAP VOL. 50/76-77 19.6
- △ 2 PARCEL MAP VOL. 26/40
- △ 3 ASSESSOR'S MAP NO. 3-90