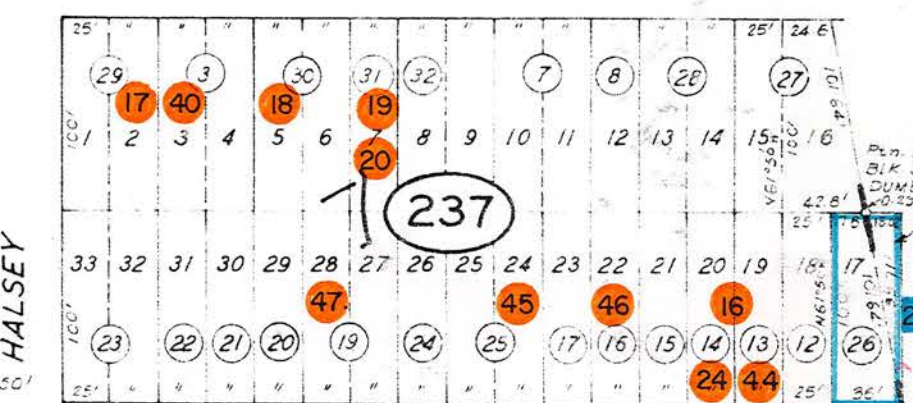
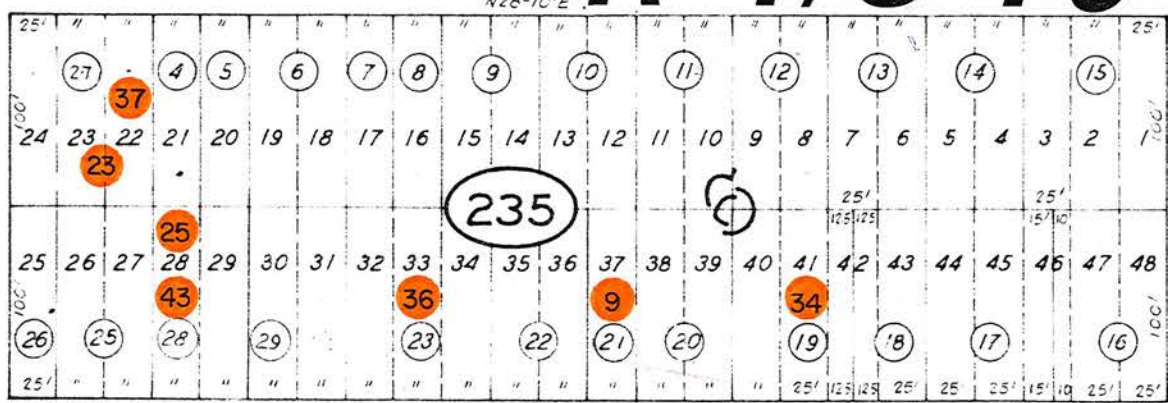
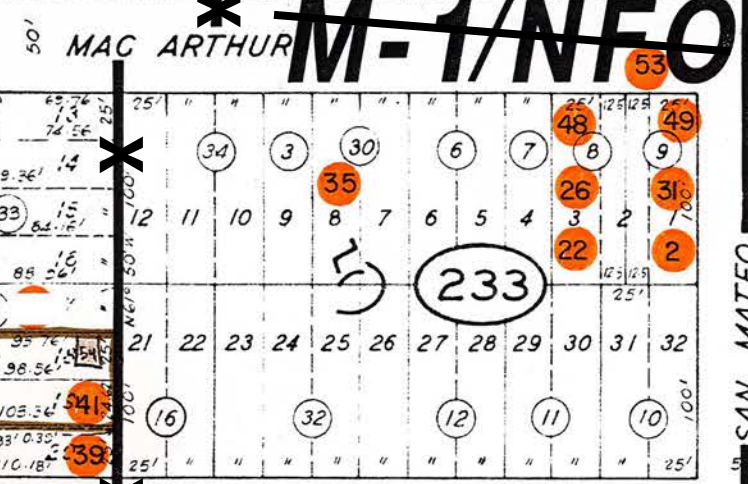
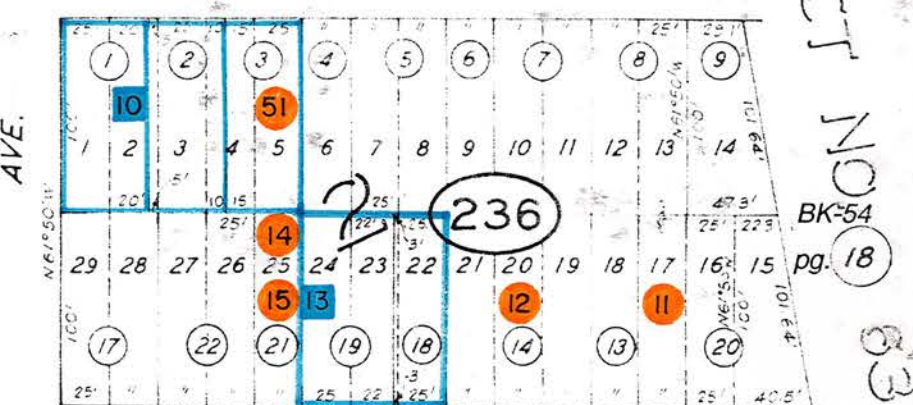
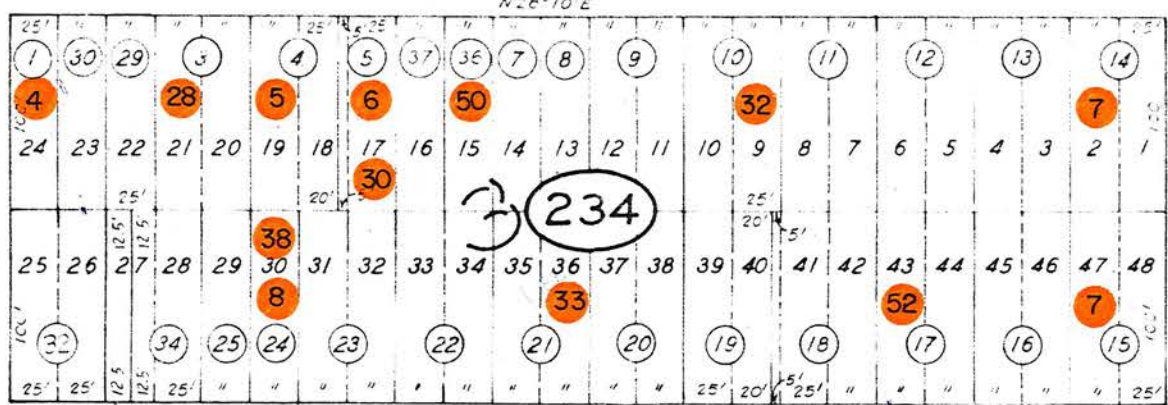
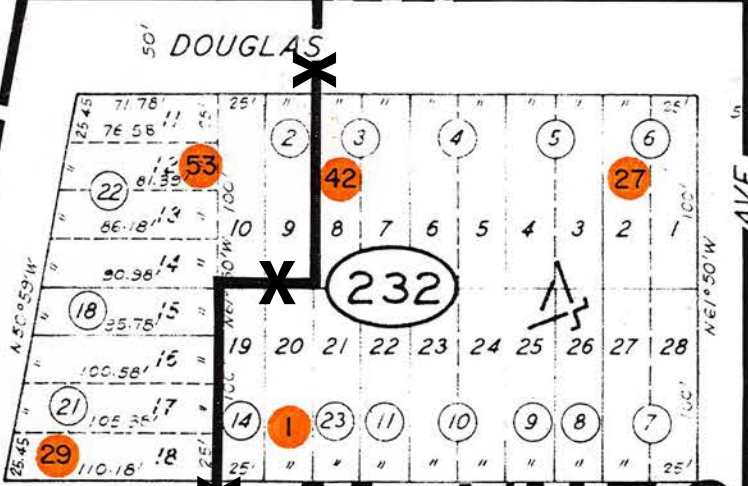
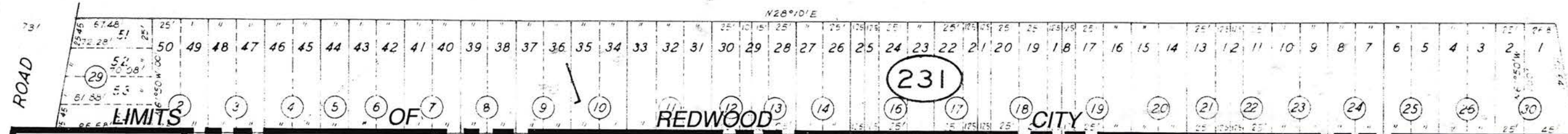
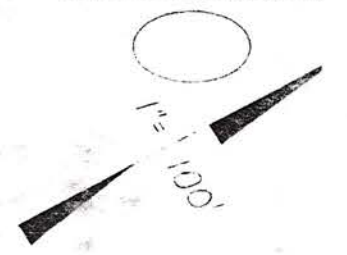


REFERENCES AND NOTES

Ref. No.	A.P.N.	Notes	Ref. No.	A.P.N.	Notes
1	054-232-230	Var 86 or 86X?, lot 20	42	054-232-030	V 90-219
2	054-233-090	V 85-4	43	054-235-280	V 90-229
3	054-233-330	Var 89	44	054-237-130	V 90-231
4	054-234-010	Var 324	45	054-237-250	V 90-236
5	054-234-040	Var 1468	46	054-237-160	V 90-237
6	054-234-050	VA 6-77	47	054-237-190	V 90-240
7	054-234-140,150	Var 631	48	054-233-080	V 90-267
8	054-234-240	VA 79-18	49	054-233-090	V 90-268
9	054-235-210	Var 1082	50	054-234-360	V 90-274
10	054-236-010,020,030	X6E-430, X6E-1721	51	054-236-030	V 91-56
11	054-236-130,200	Var 381	52	054-234-170	V 91-77
12	054-236-140	ZA-V-12-75	53	054-232-ALL	GPA 93-0002, REZ 93-0002, approved 6-8-93
13	054-236-180,190	X6E-1800		054-233-ALL	
14	054-236-210	Var 1498	54	054-233-270,280	merger, PLN 2013-00102 Doc#2013-050240, 6-18-1
15	054-236-210	Var 1564	55	As indicated	Rezoning - BOS Ordinance #4815 effective 08-22-2019; M-1/NFO and C-2/NFO/S-1/DR rezoned to CMU-3
16	054-237-130,140	V 85-39			
17	054-237-290	Var 1460			
18	054-237-300	Var 1203 (denied?)			
19	054-237-310	VA 5-77			
20	054-237-310	VA 81-4			
21	054-237-260	X6E-2090			
	054-183-030				
22	054-233-080	VA 86-2			
23	054-235-270	V 87-56			
24	054-237-140	V 87-62			
25	054-235-280	V 88-3			
26	054-233-080	V 89-53			
27	054-232-060	V 89-97			
28	054-234-030	V 89-104			
29	054-232-210	V 89-147			
30	054-234-050	V 89-164			
31	054-233-090	V 89-208			
32	054-234-100	V 90-13			
33	054-234-210	V 90-45			
34	054-235-190	V 90-64			
35	054-233-300	V 90-66			
36	054-235-230	V 90-82			
37	054-235-270	V 90-75			
38	054-234-240	OSP 90-3			
39	054-233-290	V 90-120			
40	054-237-030	V 90-172			
41	054-233-280	V 90-174			

9 REDWOOD VILLAGE

10



BK-54 pg. 11

TRACT NO. BK-54 pg. 18

M-1/NFO
MIDDLEFIELD

~~M-1/NFO~~

R-1/S-73

CMU-3

C-2/NFO/S-1/DR

BK-54 pg. 24

20.6

△ DUMBARTON PLAT OF - PTN. OF - RSM 5/32
△ DUMBARTON ACRES PTN. OF - RSM 16/08