

REFERENCES AND NOTES

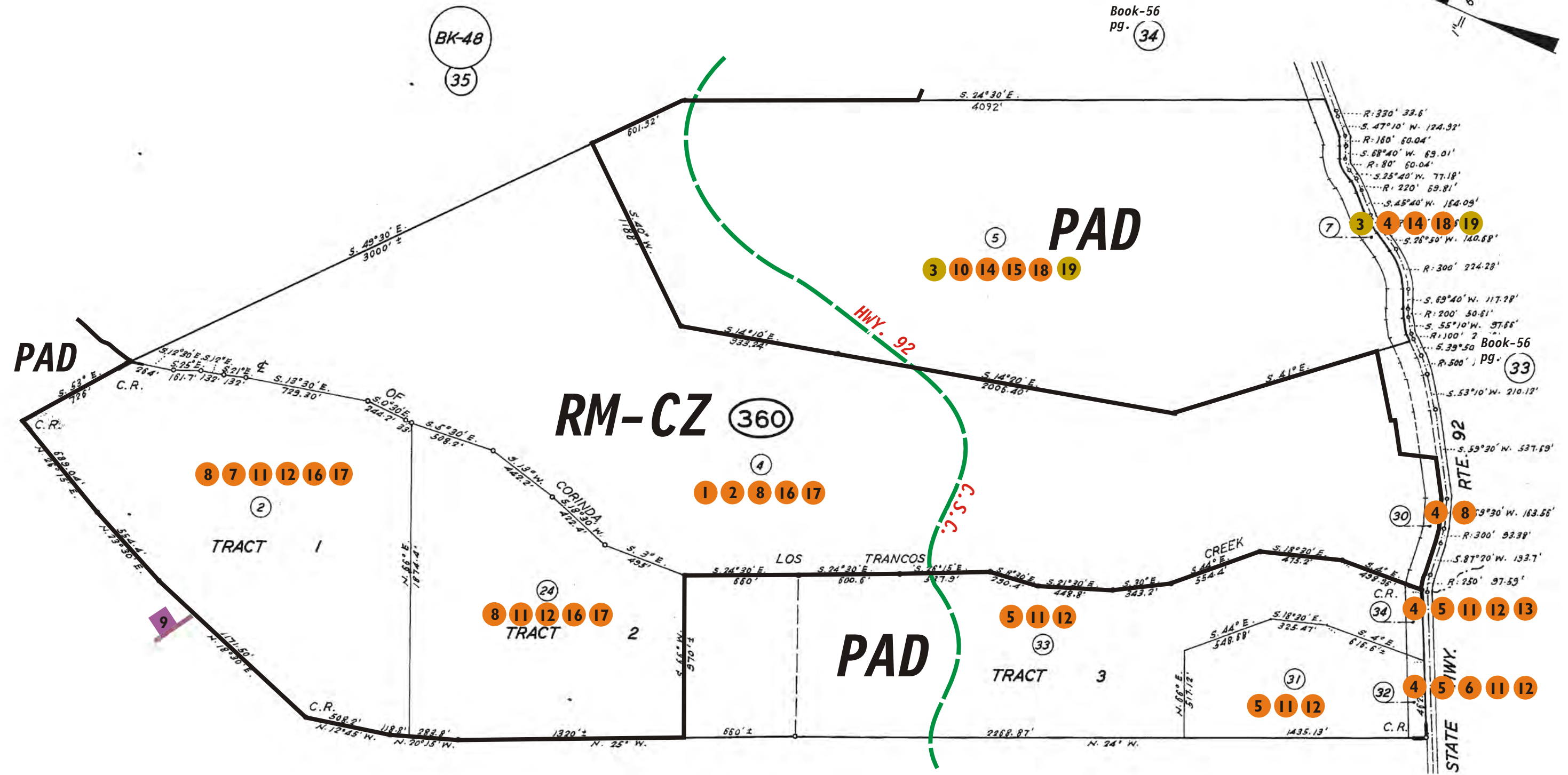
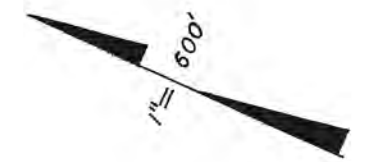
Ref. No.	A.P.N.	Notes	Ref. No.	A.P.N.	Notes
1	056-360-040 048-350-020	QP 81-1			
2	056-360-040	UP 81-34, CDP 81-74, GP 81-11			
3	056-360-050, 070	Ag. Pres., Kastl			
4	056-360-070, 300, 320, 340	CDP 84-68, pipeline			
5	056-360-310, 320, 330, 340	X6E 76-56, defaulted			
6	056-360-320	PAD 85-2, CDP 85-62			
7	056-360-020 056-530-010	PAD 86-4			
8	056-360-020, 040, 240, 300 056-370-020 047-360-010, 050 047-370-010 047-380-020 048-340-010, 020, 030 048-350-020	CDP 86-72, UP 86-23			
9	056-360-020 056-530-010, 020	LLA 86-4, Final 12-2-87			
10	056-360-050	MA-0A 87-8			
11	056-360-020, 240, 310, 320, 330, 340	LLA 86-16			
12	056-360-020, 240, 310, 320, 330, 340	CDP 86-56, PAD 86-12, SP 86-5 (Ref: LLA 86-16)			
13	056-360-340	V 87-18			
14	056-360-050, 070	PAD 87-7 & CDP 87-69			
15	056-360-050	PAD 89-10, CDP 89-29			
16	056-360-020, 040, 240 and 048-350-020	GP 89-12, CDP 89-55, BMD 89-13			
17	056-360-020, 040, 240 048-350-020	GRD 91-0015			
18	056-360-050, 070	SIE 91-0003			
19	056-360-050, 070	Wm. Act non-renewal contract fully expires 12-31-2020 PLN 2010-00407 Poc. # 2011-110518 CONF, 9-28-11 WC			

TAX CODE AREA _____

ALL
CD 56-36

- AG
EX
- CZ
APJ
- SH
- HZ
- SC
- CN
- FH
- AP

Book-56
pg. 34



Book-56
pg. 53

Book-56
pg. 52

17.5
17.6

△ CAMPBELL RANCH RSM 3/62