

REFERENCES AND NOTES

Ref. No.	A.P.N.	Notes	Ref. No.	A.P.N.	Notes
1	056-520-010, 020, 030, 040,050,110,120	Ag. Pr., Digges & Barnes, mapped ass'r list = contract? AP67-02			
2	056-530-010, 020 056-520-010, 020, 040, 050, 110, 120	X6E-3199			
3	056-520-060, 080, 090	X6E-2187			
4	056-520-060, 080	Ag. Pr., Bongard, active? 150' X 300' omitted? AP72-01			
5	056-520-060	UP 2395, sign			
6	056-520-060	UP 2394, sign			
7	056-520-060	V 84-18			
8	056-520-030 thru 060	CDP 84-68, pipeline			
9	056-520-090	Interpreted as legal bldg. site by P.C. on 1-26-66			
10	056-520-090	UP 80-14			
11	056-520-090	CDP 81-49			
12	056-520-100 048-320-020 056-530-030	Ag. Pres., Erica Nursery - AP66-01			
13	056-520-010	PAD 88-2, CDP 88-12			
14	056-520-020	MA-OA 88-31			
15	056-520-010	GP 89-2, CDP 89-25, PAD 89-7			
16	056-520-010	PAD 90-22, CDP 90-90			
17	056-520-020	V 91-57			
18	056-520-050, 110, 120 056-530-020	(0.45) Density credit allocated per Den 98-0001 3-26-98			
18	056-520-050	Wm. Act non-renewal contract will fully expire on Dec. 31, 2020, PLN2010-00407, Doc. # 2011-110518 CONF, 9-23-11 WC			

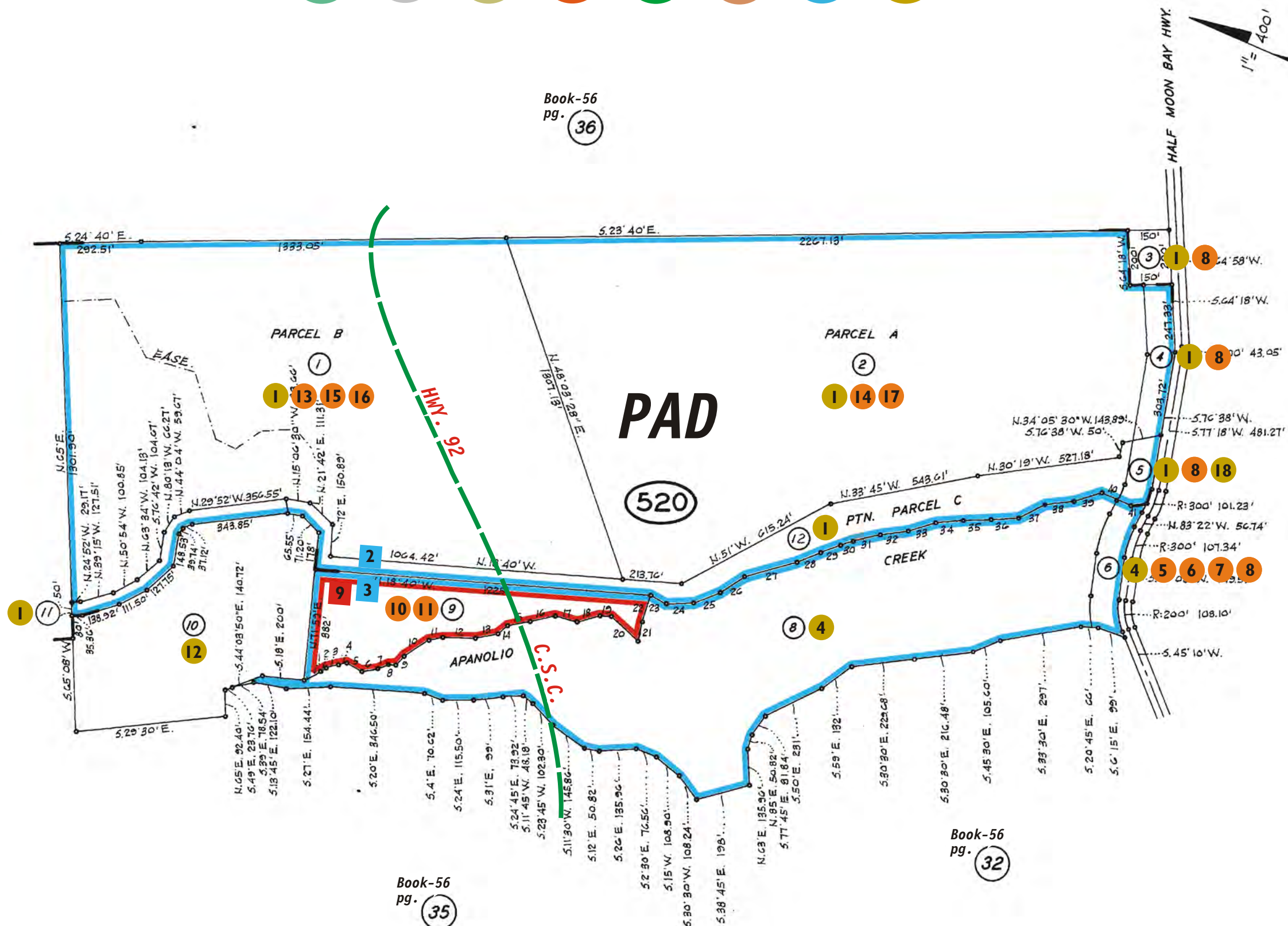
TAX CODE AREA

ALL CD 56-52

- AG
EX
- CZ
APJ
- SH
- HZ
- SC
- CN
- FH
- AP

1	N.49°16' W.	49.80'
2	N.51°59' W.	24.10'
3	N.38°42' W.	47.60'
4	N.37°04' W.	33.50'
5	N.6°02' E.	64.80'
6	N.31°09' W.	61.20'
7	N.45°07' W.	39.70'
8	N.16°05'30" W.	29'
9	N.71°28' W.	44.20'
10	N.56°46'30" W.	111.90'
11	N.33°24' W.	51.20'
12	N.22°06' W.	118.20'
13	N.33°49' W.	83.80'
14	N.63°13' W.	44.50'
15	N.33°51' W.	86.40'
16	N.35°32' W.	93.70'
17	N.8°14' W.	82'
18	N.38°21' W.	87.50'
19	N.20°32' W.	41.10'
20	N.19°08' E.	137.20'
21	S.79°17' W.	71'
22	S.84°04' W.	102.20'
23	N.5°20' E.	63.70'
24	N.24°40' W.	100'
25	N.44°40' W.	100'
26	N.55°10' W.	100'
27	N.38°40' W.	193.30'
28	N.40°07' W.	90.80'
29	N.43°38' W.	71.80'
30	N.41°30' W.	50.90'
31	N.37°19' W.	100.60'
32	N.31°02' W.	100'
33	N.33°12' W.	101.10'
34	N.29°36' W.	100'
35	N.24°45' W.	100.60'
36	N.27°12' W.	100'
37	N.49°11' W.	105.30'
38	N.29°26' W.	102'
39	N.99°50' W.	102'
40	N.0°38' E.	117.10'
41	N.30°45' W.	100'

Book-56
pg. 53



Book-56
pg. 36

Book-56
pg. 32

Book-56
pg. 32

Book-56
pg. 35

17.6

△ PARCEL MAP VOL 18/5-6
CABRILLO UNIFIED SCHOOL DISTRICT