

REFERENCES AND NOTES

Ref. No.	A.P.N.	Notes	Ref. No.	A.P.N.	Notes
1	058-261-030, 040	X6E 2272	42	058-264-010	DSR 90-31
2	058-261-030, 040	Merger 1-2-79	43	058-265-010, 020	DSR 90-43
3	058-262-010	Merger 1-2-79	44	058-265-030	DSR 90-65
4	058-262-020	Merger 1-2-79	45	058-267-020	V 91-149
5	058-262-030	Merger 1-2-79	46	058-267-100, 110	LLA, PLN 2003-00044, Document # 2004-081266, 4-26-06
6	058-262-060, 100ptn	X6E 96 (lots 9 & 11 only)	47	058-266-020	SMN, PLN 2004-00048 (OSB rqst dtd 10-12-05)
7	058-262-090, 100	X6E 2157, 4-16-59			
8	058-262-060	Merger 1-2-79			
9	058-262-100	Merger 1-2-79			
10					
11	058-263-040, 090, 100, 110 140, 160, 170	X6E 1841			
12	058-263-040	Merger 1-2-79			
13	058-263-050, 070, 080	X6E 2484			
14	058-263-070, 080	Merger 1-2-79			
15	058-263-090	X6E 3154			
16	058-263-110, 140, 160, 170	X6E 2923			
17	058-263-070, 080	MA-OA 85-19			
18	058-263-100	Var (can't read #)			
19	058-265-010	UP 7-78, Hillcrest Villa Care Home			
20	058-265-010, 020	Merger 1-2-79, same owner '79 as 040			
21	058-265-040	Merger 1-2-79, same owner '79 as 010 & 020			
22	058-265-070	Merger 1-2-79			
23	058-266-030	UP 2659			
24	058-266-040	UP 1658			
25	058-266-130, 160 to 180	X6E 3283			
26	058-266-160 to 180	LLA 77-1			
27	058-267-030	Legal, vol. 692, pg. 80			
28	058-267-030	Var 506			
29	058-267-100ptn, 110	X6E 68			
30	058-267-090 to 110, 150, 160	X6E 3126			
31	058-267-150, 160	X6E 3276			
32	058-268-020	Merger 1-2-79			
33	058-268-050, 080ptn, 090ptn	X6E-297, 8-12-48, Assessor's measurement incorrect			
34	058-267-030	MA-OA 87-70			
35	058-263-070	VA 88-11			
36	058-267-030	SMN 88-18, final 12-15-89			
37	058-267-030	GP 89-4			
38	058-268-010	DSR 89-4, resubmitted 6-29-90			
39	058-267-030	DSR 89-3			
40	058-265-040	VA 90-4, DSR 90-10			
41	058-267-020	V 90-14			

JOHNSON REDWOOD 46 SUB.

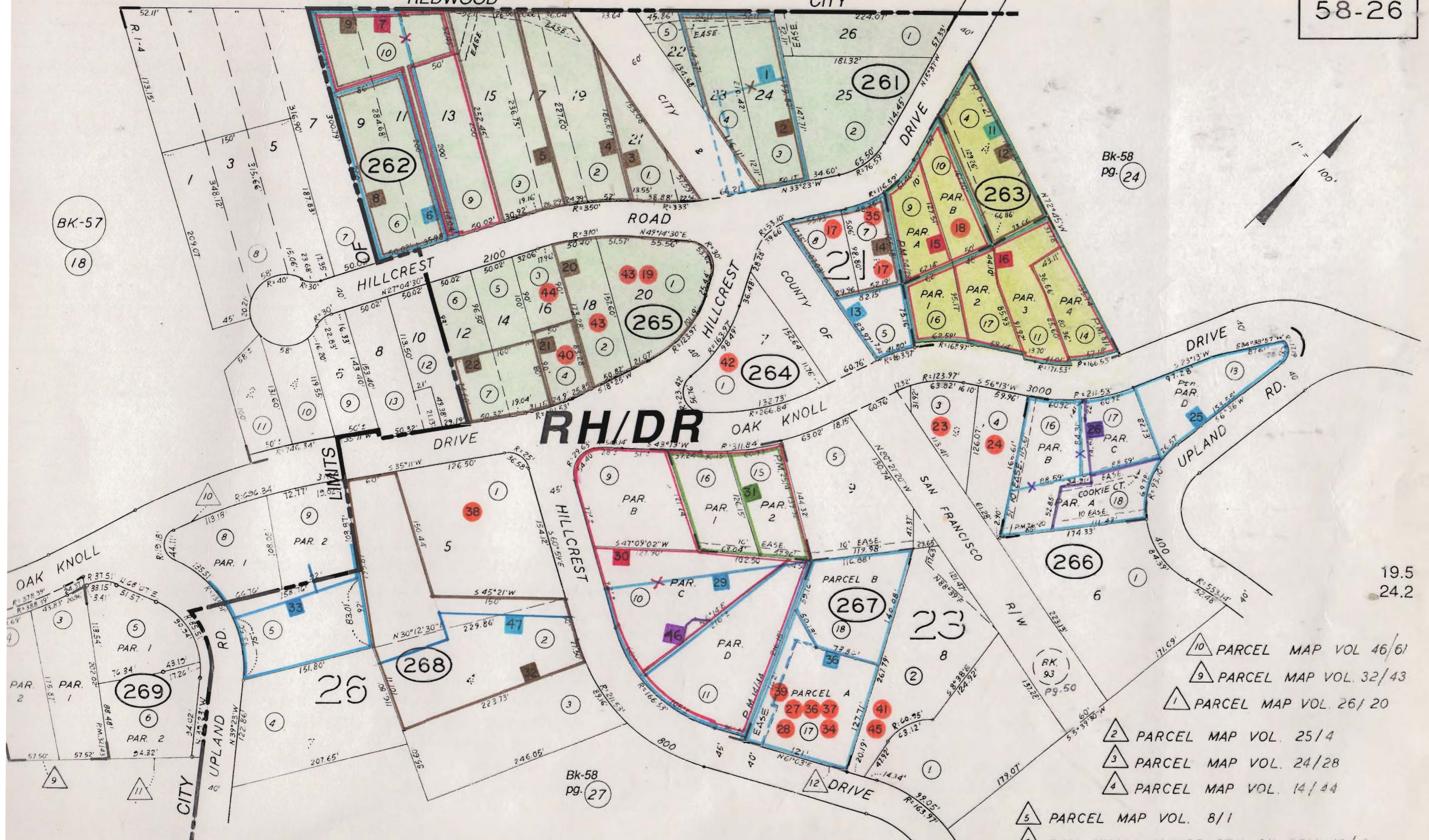
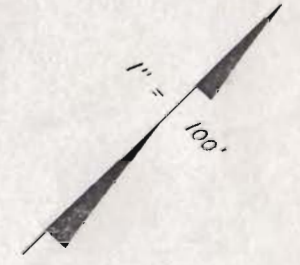
CITY

TAX CODE AREA - - -

58-26

BK-57
18

Bk-58
Pg. 24



19.5
24.2

- △ 12 PARCEL MAP VOL 62/93
- △ 11 PARCEL MAP VOL 50/58

- △ 10 PARCEL MAP VOL 46/61
- △ 9 PARCEL MAP VOL 32/43
- △ 1 PARCEL MAP VOL 26/20
- △ 2 PARCEL MAP VOL 25/4
- △ 3 PARCEL MAP VOL 24/28
- △ 4 PARCEL MAP VOL 14/44

- △ 5 PARCEL MAP VOL 8/1
- △ 6 OAK KNOLL MANOR PTN. OF RSM 10/4
- △ 7 RESUB. OF LOT 6 BLK. 21 OAK KNOLL MANOR RSM 18/26
- △ 8 RESUB. OF LOTS 1 TO 4 BLK. 27 OAK KNOLL

Bk-58
Pg. 27

BK 93
Pg. 50