

REFERENCES AND NOTES

Ref. No. AP.N. Notes Ref. No. AP.N. Notes

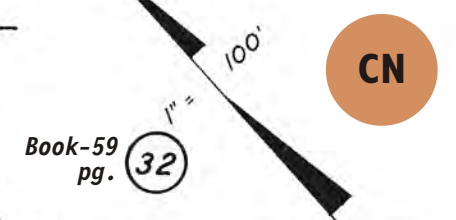
|    |  |  |
|----|--|--|
| 1  | 059-252-200, 210                               | X6E-1777                                   |
| 2  | 059-252-220, 230                               | X6E-1646                                   |
| 3  | 059-252-270, 280                               | X6E-524                                    |
| 4  | 059-252-380                                    | SMJ 78-1, condos. See BK. III-28           |
| 5  | 059-253-220, 230                               | X6E-965                                    |
| 6  | 059-253-300                                    | UP 1876                                    |
| 7  | 059-252-370, 380, 390<br>059-253-280, 290, 300 | Notify State of any action on Woodside Rd. |
| 8  | 059-254-230                                    | Var 1414                                   |
| 9  | 059-255-160                                    | UP 87-18                                   |
| 10 | 059-252-390                                    | V 91-161                                   |
| 11 | 059-254-170                                    | V 91-270                                   |



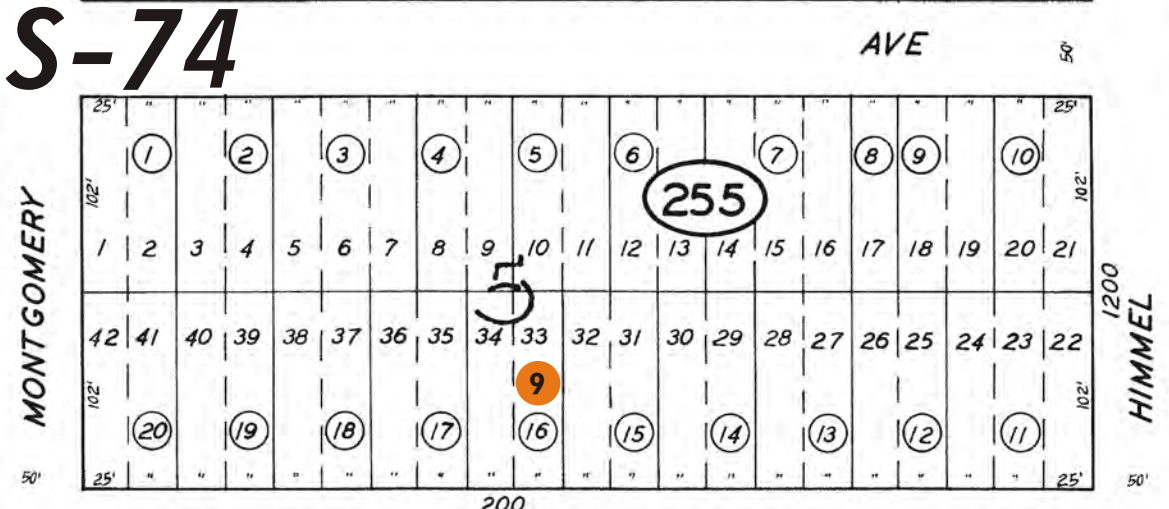
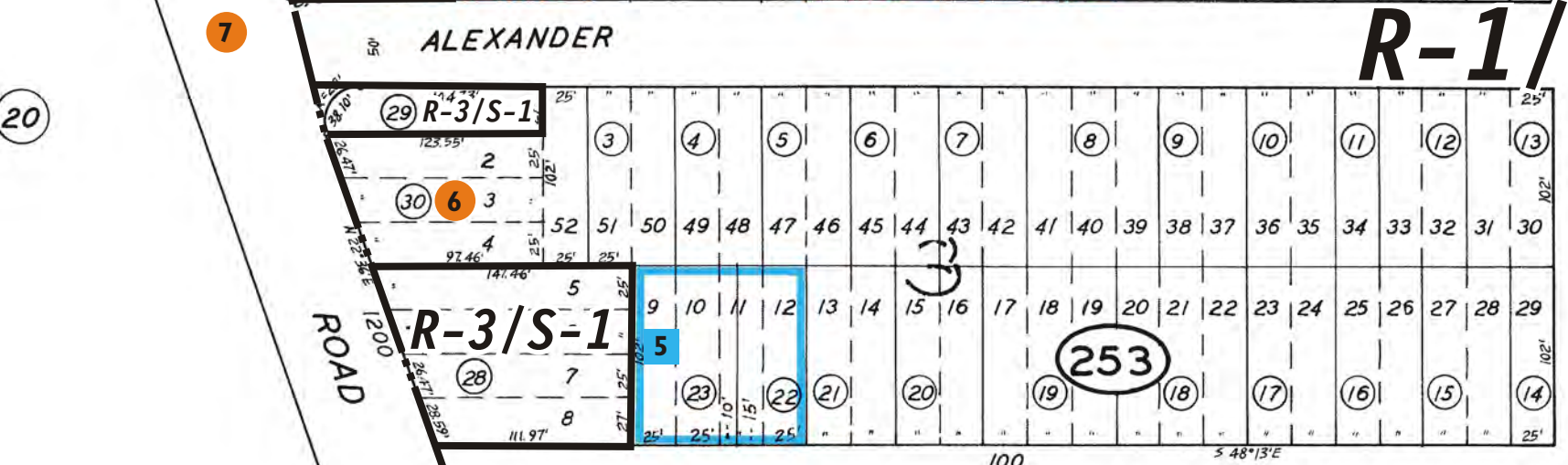
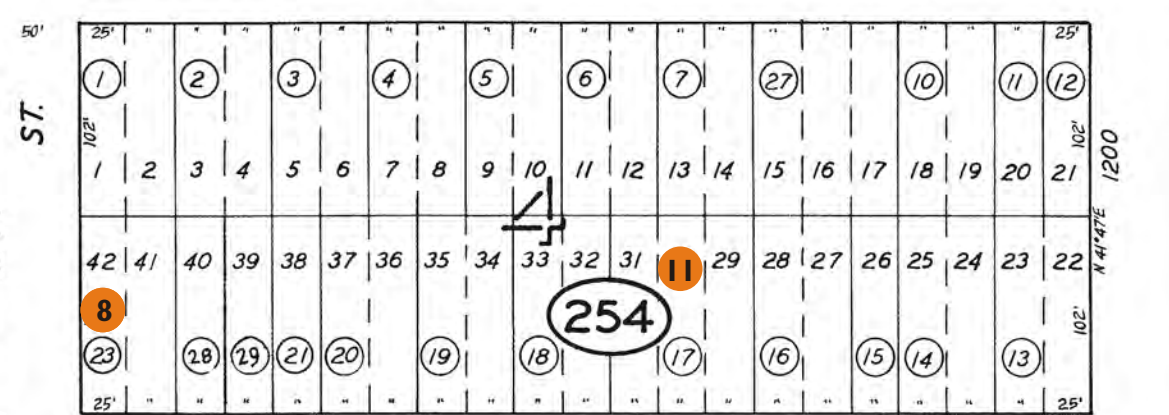
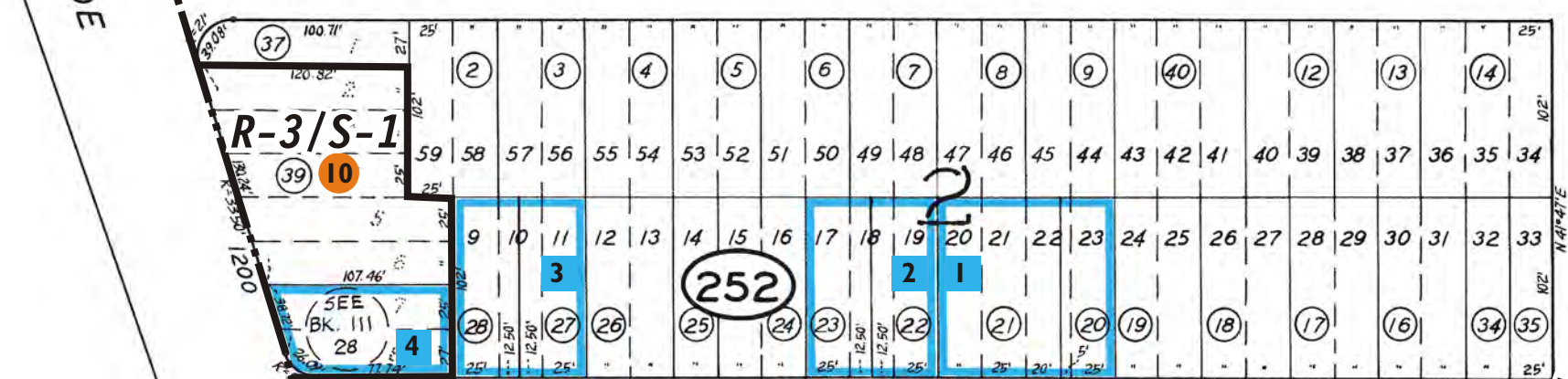
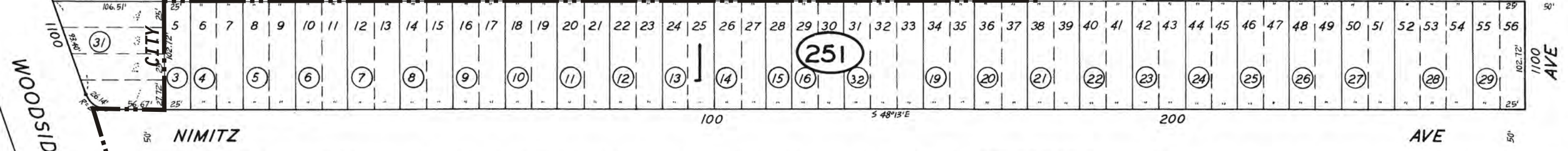
ATHERWOOD SUB.

TAX CODE AREA

59-25



LIMITS OF REDWOOD CITY COUNTRY LANE



R-1/S-74

WOODSIDE NIMITZ ALEXANDER RUTHERFORD SEQUOIA TRACT

BK-69  
31

24.3  
25.1

OAKLEIGH PARK TRACT RSM 7/16