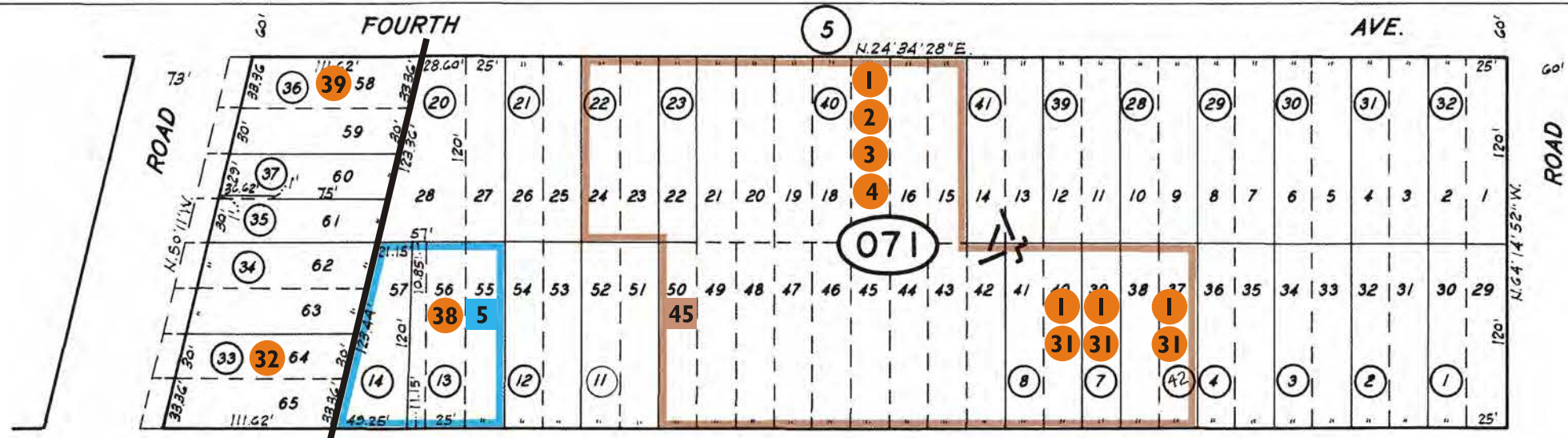


REFERENCES AND NOTES

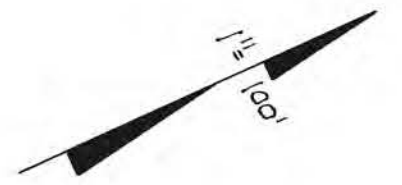
Ref. No.	A.P.N.	Notes	Ref. No.	A.P.N.	Notes
1	060-071-070, 080, 400, 420	UP 2311 (1st Church. R.C.)	43	060-072-160	USE 91-0016
2	060-071-400	UP 429	44	060-074-190, 220	V 91-186
3	060-071-400	UP 586	45	060-071-070, 080, 220, 230, 400, 420	Merger, PLN 2010-00332, Doc. # 2010-127483 CONF, 10-28-10 NM
4	060-071-400	UP 1955			
5	060-071-130, 140	X6E 180			
6	060-072-030, 560	X6E 351			
7	060-072-560	Var X7E 1500			
8	060-072-120	Var 1134			
9	060-072-160	UP 85-28			
10	060-072-380	UP 80-34			
11	060-072-390	UP 1244			
12	060-072-390	V 86-4			
13	060-072-460, 530	UP 1806 (Billboard)			
14	060-072-460, 530	UP 1895 (Billboard)			
15	060-072-460, 530	UP 2062 (EPA)			
16	060-072-460, 530	UP 228X?			
17	060-072-460, 530	UP 2420 (EPA)			
18	060-072-460, 530	ZA-UP 14-75, renewal			
19	060-072-540, 550	X6E 2528			
20	060-072-540, 550	Var 1044?			
21	060-073-440	V 85-18			
22	060-073-460	UP 1485			
23	060-073-470, 480	X6E 2732			
24	060-073-470, 480	Var 1247			
25	060-073-510	UP 1570 (Billboard)			
26	060-073-510	UP 1941?			
27	060-074-070	Legal, 3-27-42, 49195E-(6)			
28	060-074-160	V 84-63			
29	060-072-460, 530	V 86-26			
30	060-072-460, 530	UP 86-22			
31	060-071-070, 080, 420	UP 88-12, X7D 2311 (PLN 2001-00342)			
32	060-071-330	V 88-55			
33	060-072-460	V 88-91			
34	060-072-490	MA-OA 88-116			
35	060-073-110	V 89-32			
36	060-074-220	MA-OA 89-36; ZA 89-1			
37	060-073-510	MA-OA 90-27 (Sequoia School District Adult School)			
38	060-071-130	V 90-103			
39	060-071-360	V 90-157			
40	060-074-230, 240	LLA 90-11, 10-18-91			
41	060-073-440	Violation note removed			
42	060-072-270	V 90-244			

* ~~The S-1 Overlay criteria applies only to density (minimum lot area per dwelling unit); C-1/NFO District Regs provide for all other development standards.~~

Book-60
pg. 8



CN 60-7

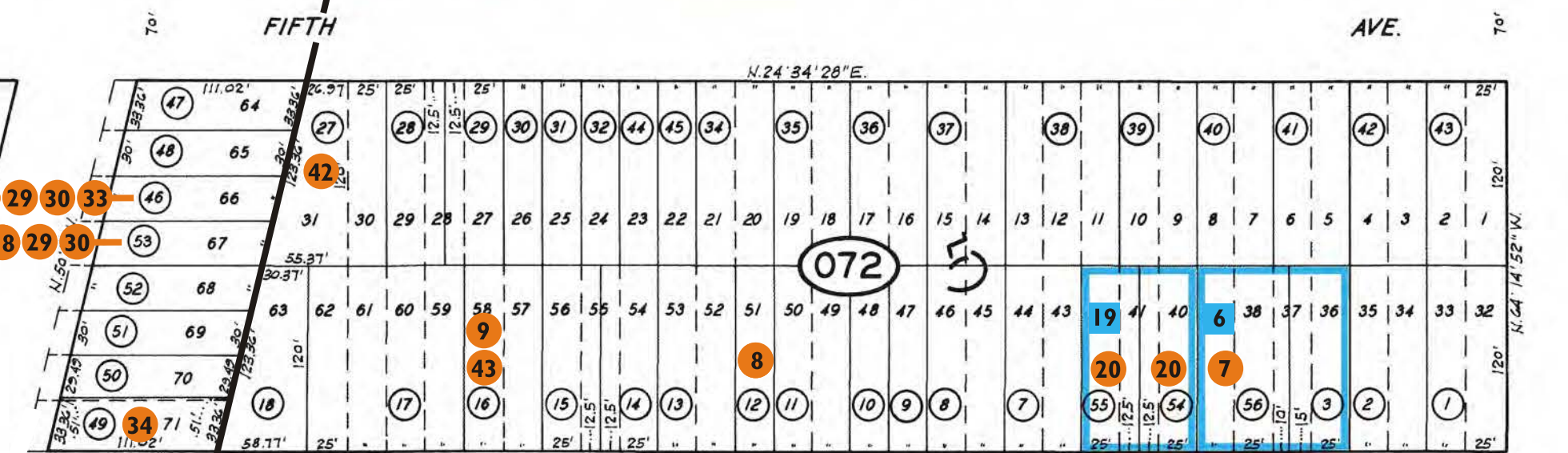


TAX CODE AREA

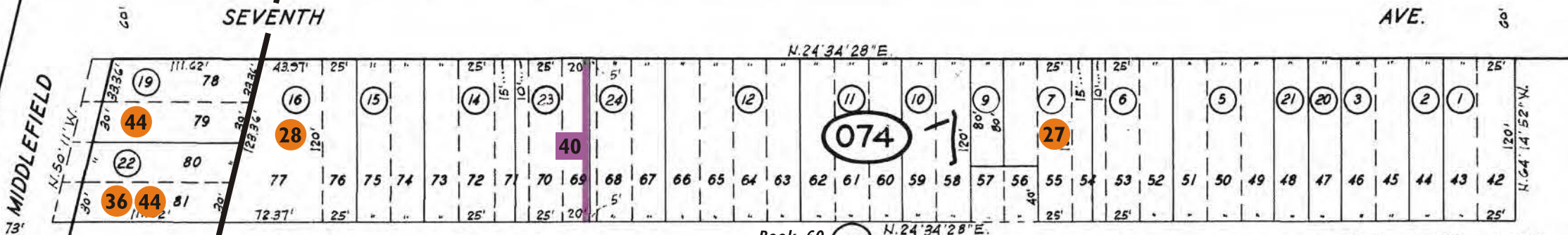
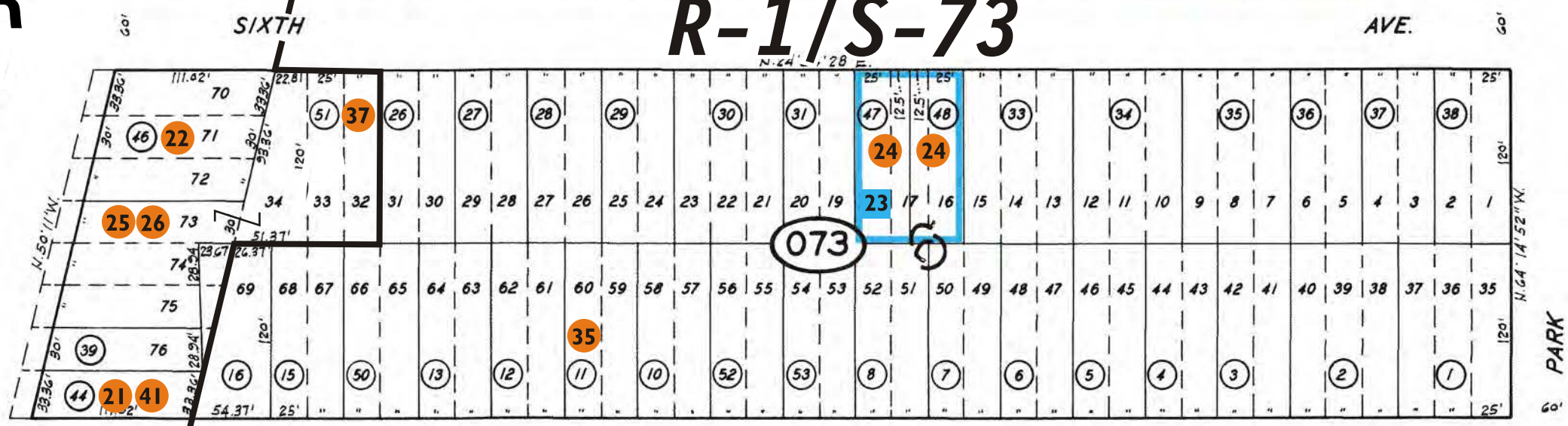
NMU/DR

R-1/S-73

Book-60
pg. 6



Book-60
pg. 9



25.1