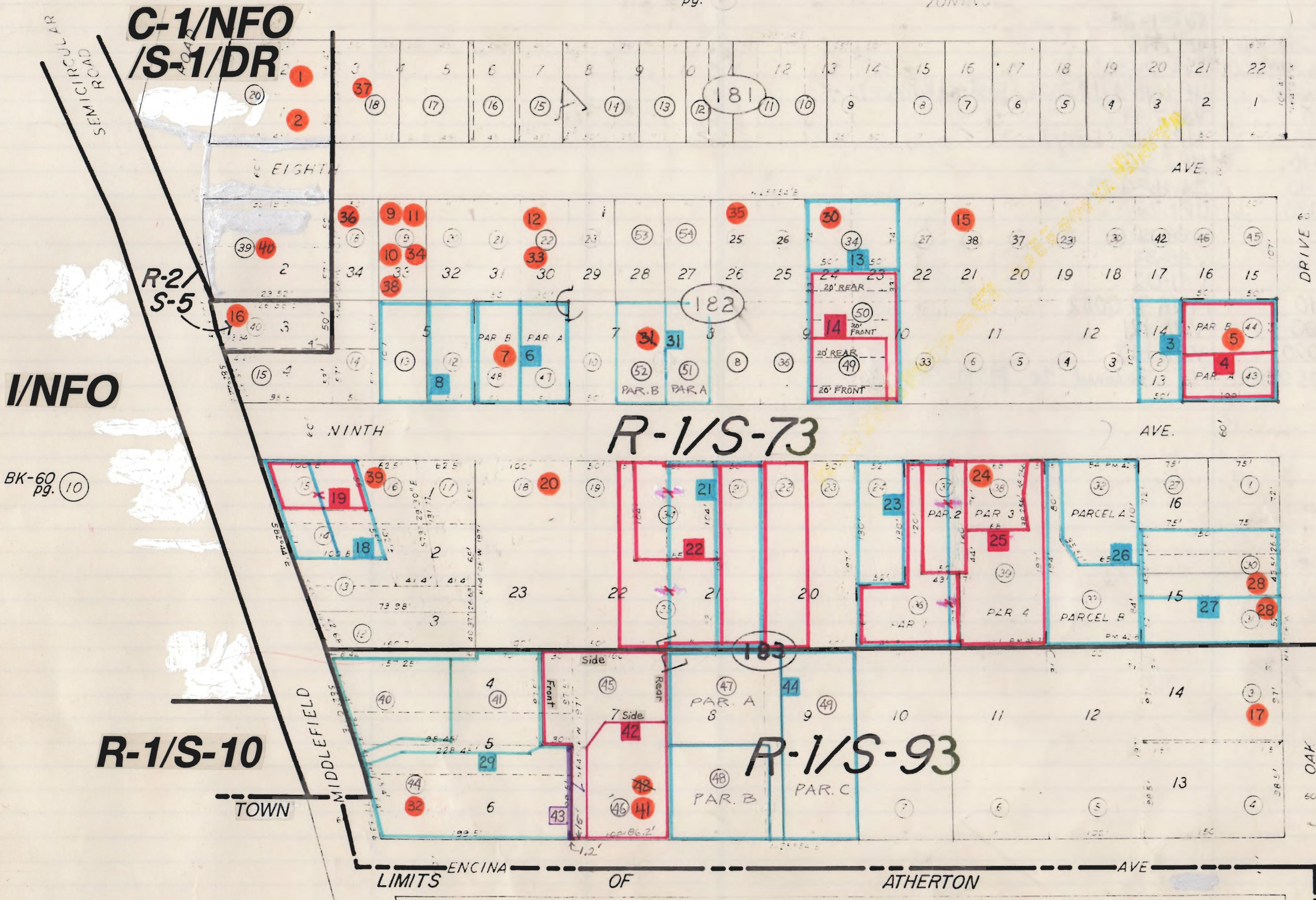


REFERENCES AND NOTES

Ref. No.	A.P.N.	Notes	Ref. No.	A.P.N.	Notes
1	060-181-200	"Fischer Amendment"	33	060-183-450,460,440	LLA91-0017, final 1-23-92. Also SMN91-0011
2	060-181-200	UP 2277	44	060-183-470,480,490	PLN 1999-00282, 12-7-99
3	060-182-020,430,440	X6E-435			
4	060-182-430,440	SMN 80-31			
5	060-182-010	VA 81-11, HMP 81-2 (West 1/2?)			
6	060-182-110	SMN 82-12			
7	060-182-110 (so. 1/2?)	"Existing structure with water & sewer, R.D. 6-1-63"			
8	060-182-120,130	X6E-2301			
9	060-182-190	Var 423			
10	060-182-190	UP 1225?			
11	060-182-190	UP 2003?			
12	060-182-220	V 84-21			
13	060-182-340,350	X6E-2154			
14	060-182-490,500	SMN 85-19, Final 5-14-87. Setbacks established.			
15	060-182-380	UP 2245, Denied (for rest home)			
16	060-182-400	Var 1144?			
17	060-183-030	UP 505			
18	060-183-140,150	X6E-449			
19	060-183-150	X6E-2196			
20	060-183-180	Var 370			
21	060-183-210, pt 340, pt 350	X6E-231			
22	060-183-210,220,340,350	X6E-2740			
23	060-183-240,360, pt 370, pt 380	X6E-2202, lot 19			
24	060-183-380	SMN 76-25, cond. apvd. 12-13-76, defaulted (lot 18)			
25	060-183-360,370,380,390	SMN 78-35			
26	060-183-320,330	SMN 77-51			
27	060-183-300,310	X6E-1181 (P.C. approved 3/54) (ref. 1171?)			
28	060-183-300,310	LLA, never approved?, no #, see pencil line			
29	060-183-100,110	SMN 86-14, Final 12-2-86			
30	060-182-340	V 86-51			
31	060-182-510,520	SMN 87-6, Final 1-20-88			
32	060-183-100	MA-OA 87-82			
33	060-182-220	V 88-18			
34	060-182-190	V 89-89			
35	060-182-250	V 89-141			
36	060-182-180	V 89-174			
37	060-181-180	V 89-191			
38	060-182-190	V 90-77			
39	060-183-160	V 90-199			
40	060-182-390	MNA 91-0006			
41	060-183-450,460	MNA 91-0055			
42	060-183-450,460	SMN 91-0011, 2-24-94 also LLA91-0017			



I/NFO

BK-60 pg. 10

BK-60 pg. 15

25.1
25.2