

REFERENCES AND NOTES

Ref. No.	AP.N.	Notes	Ref. No.	AP.N.	Notes
1	060-261-070	X6E-1428			
2	060-261-230,240,250	Var 948			
3	060-261-230,240,250	X6E-2430			
4	060-261-adj-260	UP 1618 & UP 2026 (Foster & Kleiser)			
5	060-264-140	Var 2199			
6	060-264-140	UP 1995 (Ferry)			
7	060-264-140	UP 2302			
8	060-264-140	ZA-UP 9-73			
9	060-265-030	UP 1267			
10	060-263-060	V 88-36			
11	060-263-140	V 88-39			
12	060-261-140	V 91-02			
13	060-265-010	MNA 91-0052			
14	060-265-100	V 91-121			
15	060-264-020	V 91-157			
16	060-265-050, 060.070	ReZoned to PUD 135 137 (11/19/14)			

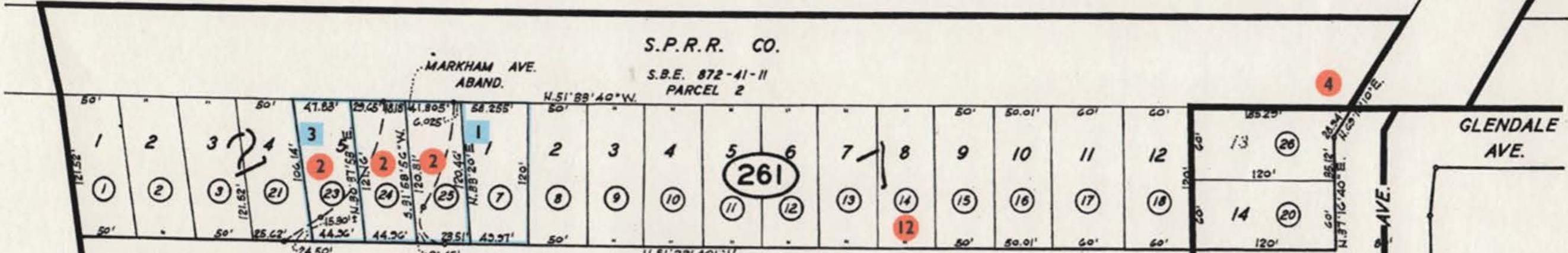
8



S.P.R.R. CO.

MARKHAM AVE. ABAND.

S.B.E. 872-41-11 PARCEL 2

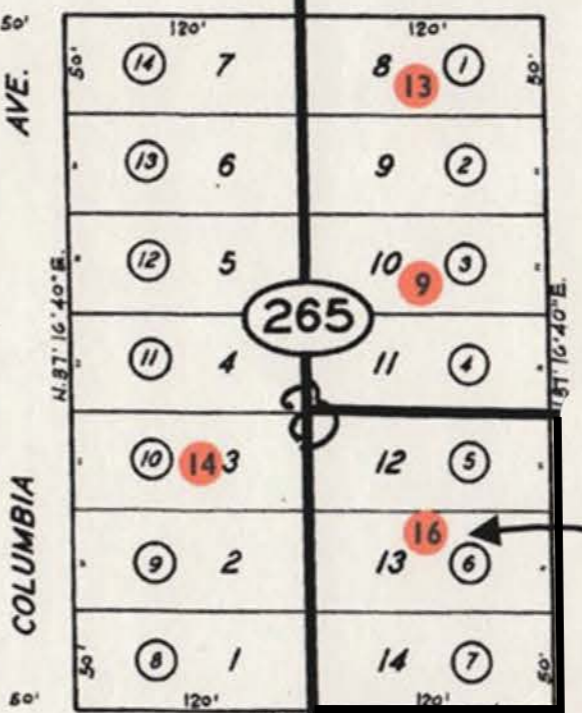
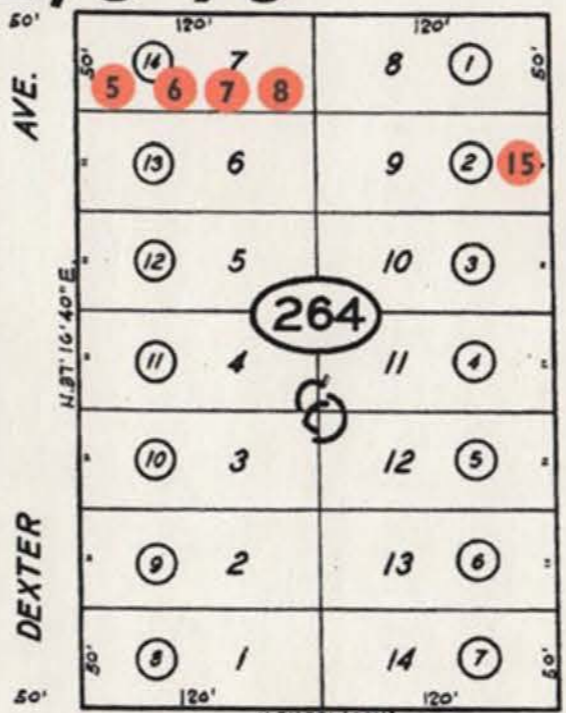
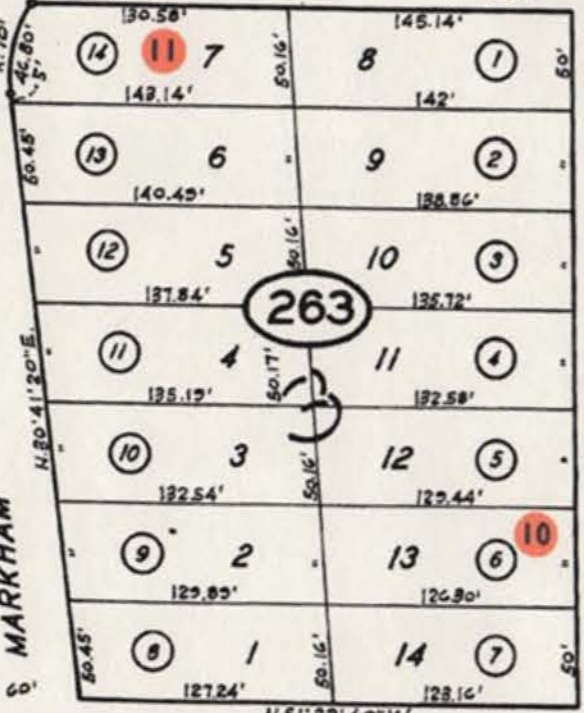
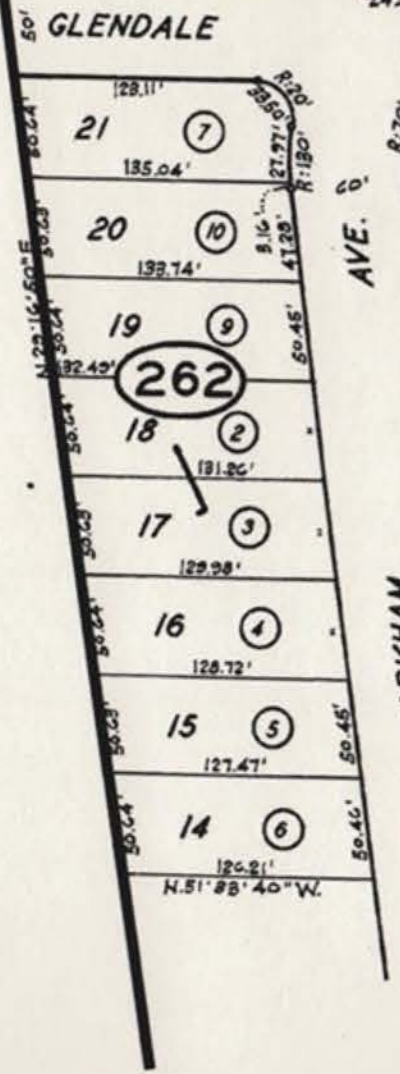


R-1/S-73

NMU
~~C-1/S-1~~

BK. 54
28

Book-60
pg. 28



PUD-137

Book-60
pg. 27

27