

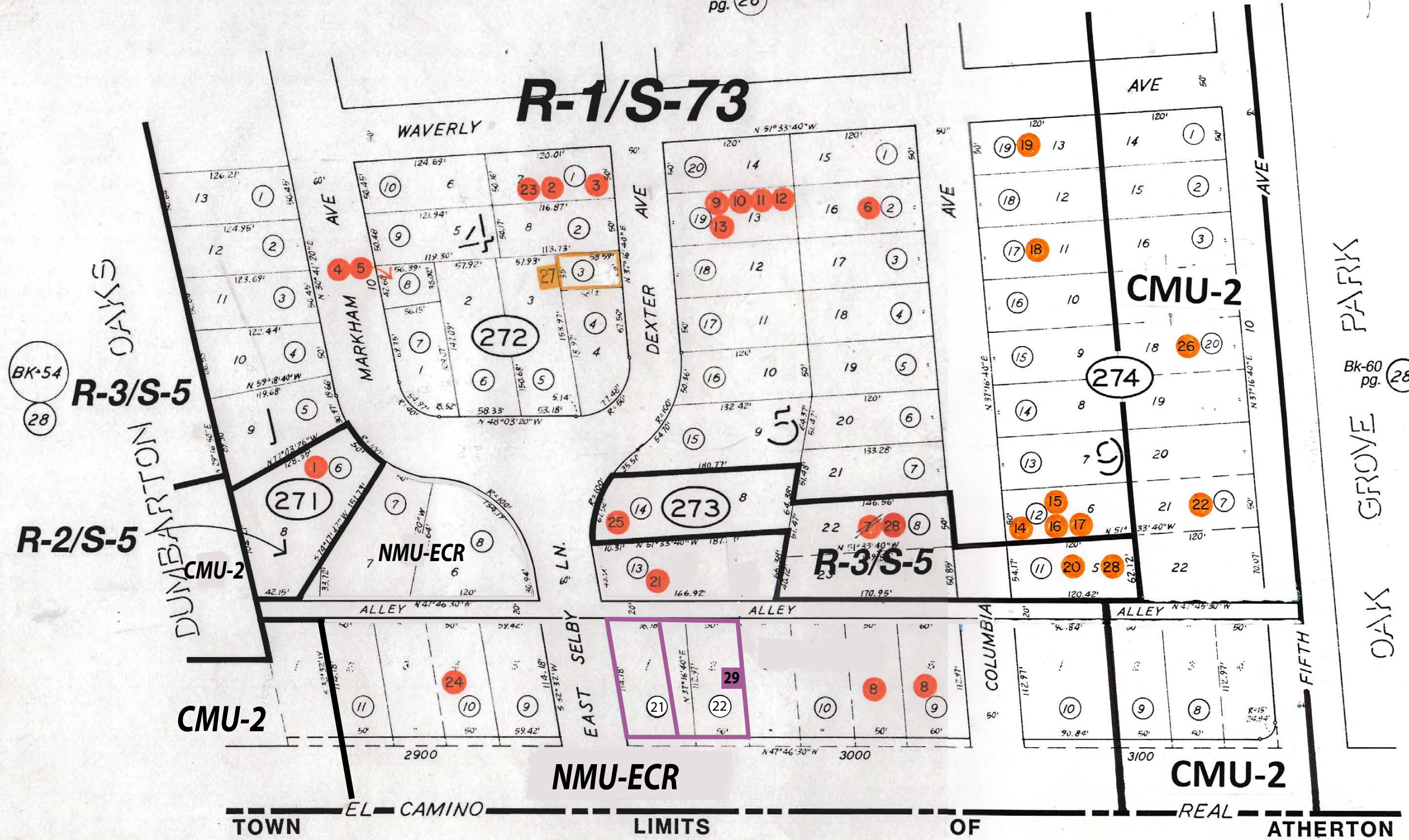
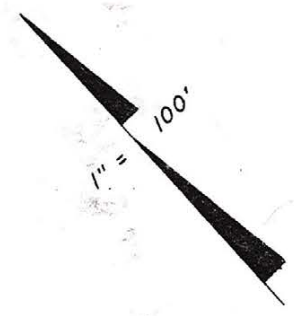
REFERENCES AND NOTES

Ref. No.	A.P.N.	Notes	Ref. No.	A.P.N.	Notes
1	060-271-060	UP 1-77			
2	060-272-010	V 84-46			
3	060-272-010	V 84-72			
4	060-272-080	MA-OA 85-60			
5	060-272-080	VA 85-11			
6	060-273-020	V 83-18			
<del>7</del>	<del>060-273-080</del>	<del>Var 333</del>			
8	060-273-090,100	UP 1950			
9	060-273-190	UP 1975			
10	060-273-190	UP 2068			
11	060-273-190	UP 2192			
12	060-273-190	UP 2365			
13	060-273-190	UP 32-77			
14	060-274-120	UP 1594			
15	060-274-120	UP 1751			
16	060-274-120	UP 2077A			
17	060-274-120	ZA-UP 44-75			
18	060-274-170	V 84-3			
19	060-274-190	V 84-4			
20	060-274-110	V 86-12			
21	060-273-130	For commercial expansion. See Sect.6121(a)1.			
22	060-274-070	MA-OA 88-107			
23	060-272-010	UP 89-27			
24	060-271-100	MA-OA 90-35			
25	060-273-140	SMN 90-9			
26	060-274-200	MA-OA 90-126			
27 27	060-272-030	COC 92-0006, legal type A			
28	060-273-080	GPA 93-0001, REZ 93-0001, recorded 6-15-93			
	060-274-110				
29	060-273-110, 120	LLA; PLN 2018-00492; Doc# 2018-019293; 3/15/18			

FOUND INCORRECT S. BOPTALISSI (FLANNER)  
 APPROVED BY S. SANDERS (GRAPHICS) 7.12.04

CN 60-27

Bk-60 pg. 26



BK-54  
28

Bk-60  
pg. 28

CEBALO BK-59  
17

ACRES

SELBY  
LANE

ATHERTON

BK-59  
30

MANOR

25.1