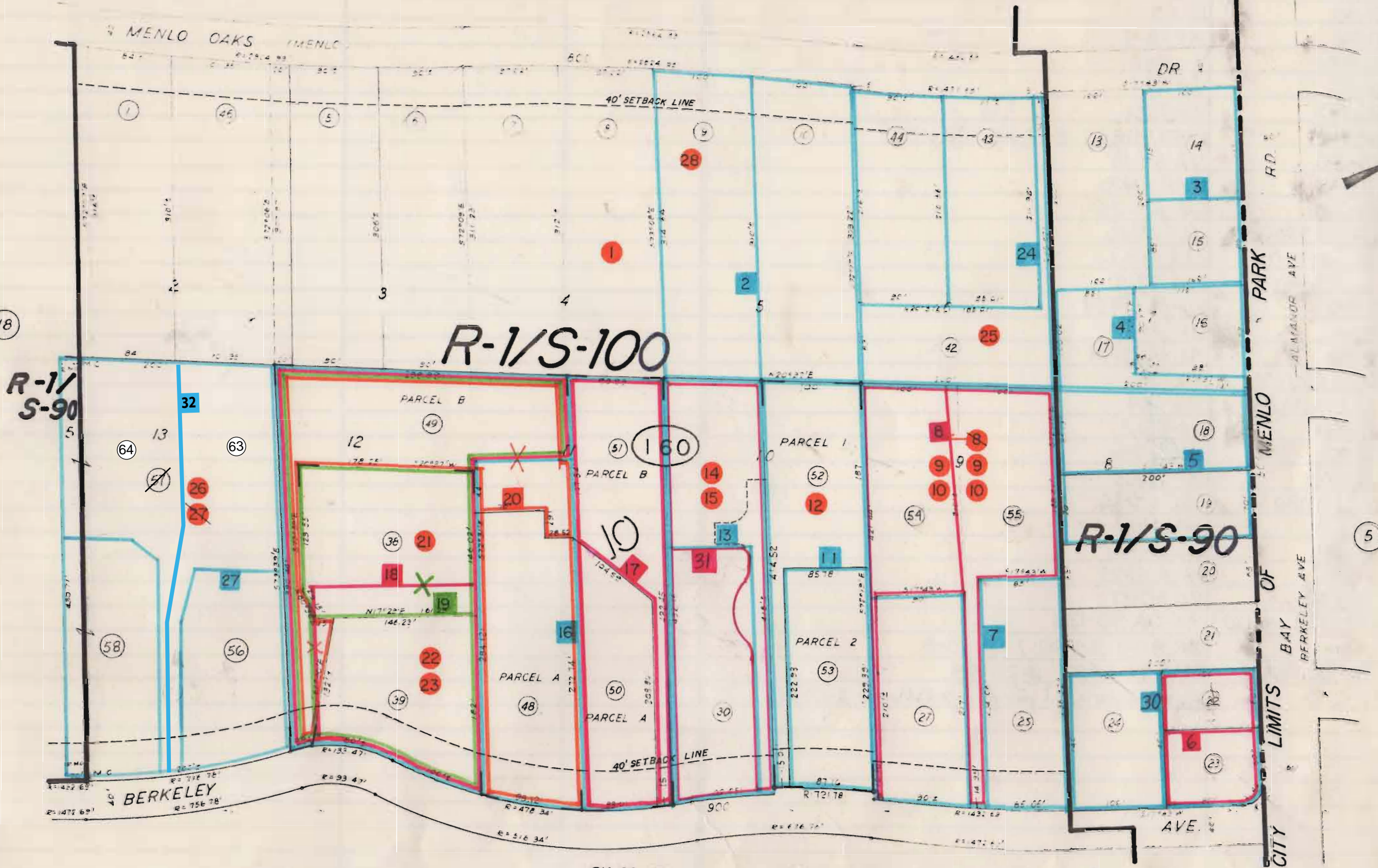


REFERENCES AND NOTES

Ref. No.	AP.N.	Notes	Ref. No.	A.P.N.	Notes
1	062-160-080	UP 983			
2	062-160-090,100	X6E-152			
3	062-160-140,150	X6E-52B			
4	062-160-160,170	X6E-345			
5	062-160-180,190	X6E-620,1-3-51. Mapping correction 7-24-02.			
6	062-160-220,230	X6E-648			
7	062-160-250 thru 280	X6E-1041			
8	062-160-260,280 540,550	SMN 85-5, Final 3-19-86			
9	062-160-260,280 540,550	SEI 85-2			
10	062-160-260,280 540,550	VA 85-12			
11	062-160-290	SMN 79-2			
12	062-160-290	VA 2-79			
13	062-160-300	X6E-1710			
14	062-160-300	Var 573			
15	062-160-300	MA-OA 84-71			
16	062-160-310,320,330 370,380,390	X6E-217 (3 parcels)			
17	062-160-310	SMN 78-64 (2 parcels)			
18	062-160-320,370,380,390	X6E-1483 (2 parcels)			
19	062-160-320,370,380,390	X6E-1850 (3 parcels)			
20	062-160-320,330,370	SMN 78-23 (2 parcels)			
21	062-160-380	MA-OA 84-84			
22	062-160-390	Var 313			
23	062-160-390	MA-OA 85-68			
24	062-160-420,430,440	X6E-2536			
25	062-160-420	Var 1050			
26	062-160-450 560,570,580	MA-OA ? misplaced or misnumbered			
27	062-160-450 560,570,580	SMN 84-17, Rec. 10-29-87			
28	062-160-090	V90-169			
29	Menlo Oaks	ZR 90-1, ZA 90-7, ZA 90-8			
30	062-160-220,230,240	X6E-595, 10-26-50			
31	062-160-300	PLN 1999-00340, 9-24-02.			
32	062-160-570, 630, 640	SUB; PLN 2015-000302; Vol. 82, Pg. 82 New Parcels: Parcel A : 062-160-630 Parcel B : 062-160-640			



- △ PARCEL MAP VOL 49/53
- △ PARCEL MAP VOL 51/35
- △ PARCEL MAP VOL 43/18
- △ MENLO OAKS RSM 7 27
- △ RESUB. OF LOT 14 BLK 10 OF MENLO OAKS RSM 18,66