

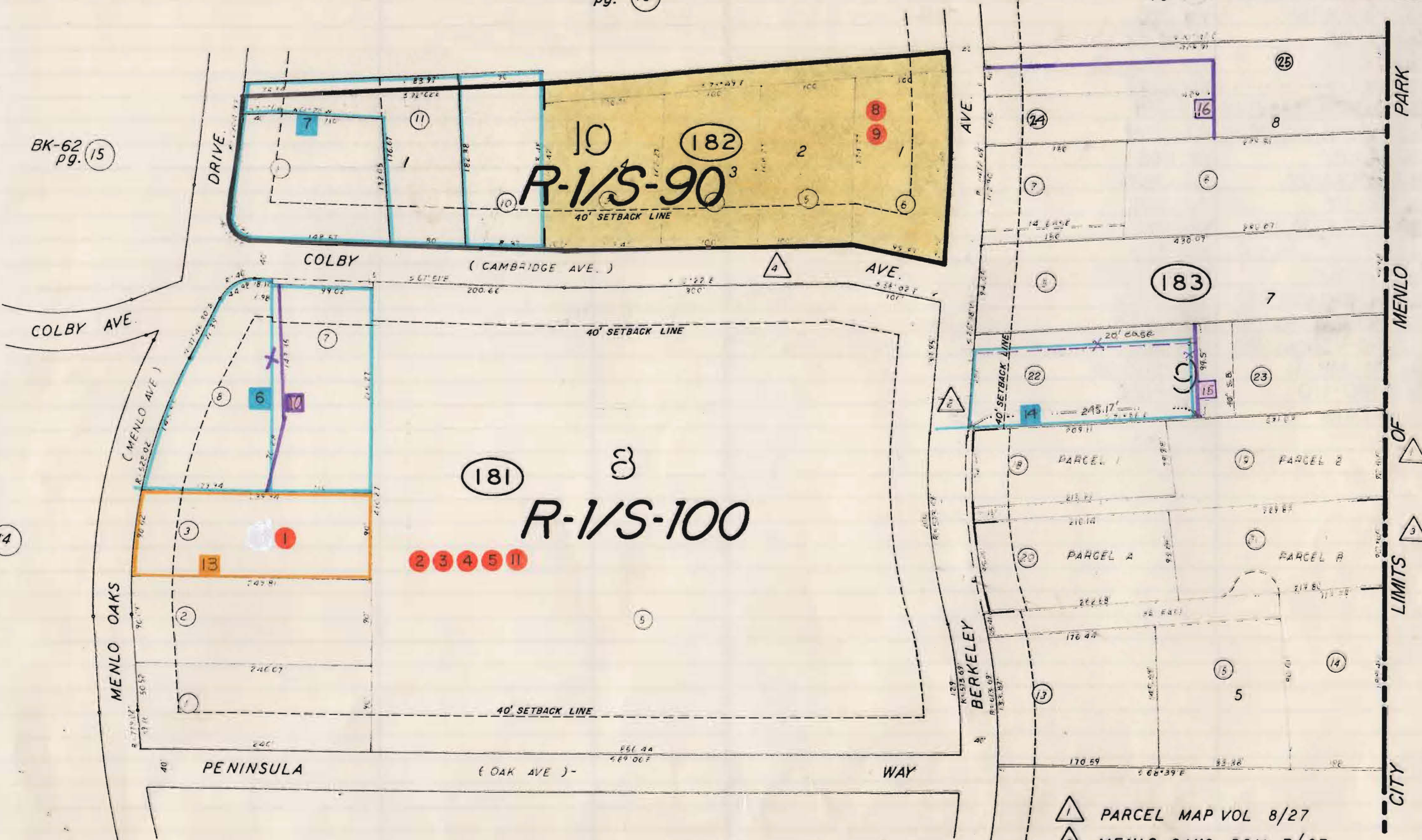
REFERENCES AND NOTES

| Ref. No. | A.P.N. | Notes | Ref. No. | A.P.N. | Notes |
|----------|-----------------------|---|----------|--------|-------|
| 1 | 062-181-130 | ZA-UP 44-74 | | | |
| 2 | 062-181-050 | UP 1321 | | | |
| 3 | 062-181-050 | Var-ZA-V 35-73 | | | |
| 4 | 062-181-050 | ZA-UP 26-73 | | | |
| 5 | 062-181-050 | ZA-UP 69-74 | | | |
| 6 | 062-181-070, 080 | X6E-193 | | | |
| 7 | 062-182-010, 100, 110 | X6E-2502 | | | |
| 8 | 062-182-060 | ZA-V 66?-74 | | | |
| 9 | 062-182-060 | ZA-V 31-75 | | | |
| 10 | 062-181-070, 080 | LLA 8-22-69 | | | |
| 11 | 062-181-050 | MA-OA 90-2 | | | |
| 12 | Menlo Oaks | ZR 90-1, ZA 90-7, ZA 90-8 | | | |
| 13 | 062-181-030 | COC 91-0013 | | | |
| 14 | 062-183-040 | SUBDIV. 163-1416 APPROVED 2-21-55 | | | |
| 15 | 062-183-220, 230 | PLN 1999-00483, LLA 4-11-00. | | | |
| 16 | 062-183-240, 250 | PLN 2000-00874, LLA, 11-21-01. DOC #2003-089176 | | | |

BK-62 pg. 16

BK-62 pg. 19

BK-62 pg. 15



181 R-1/S-100

182 R-1/S-90

183

2 3 4 5 11

WAY

PENINSULA

(OAK AVE)

- △ 1 PARCEL MAP VOL 8/27
- △ 2 MENLO OAKS RSM 7/27
- △ 3 PARCEL MAP VOL 12/10
- △ 4 MENLO OAKS RESUB. RSM 18/66

25.3

BK-62 pg. 17