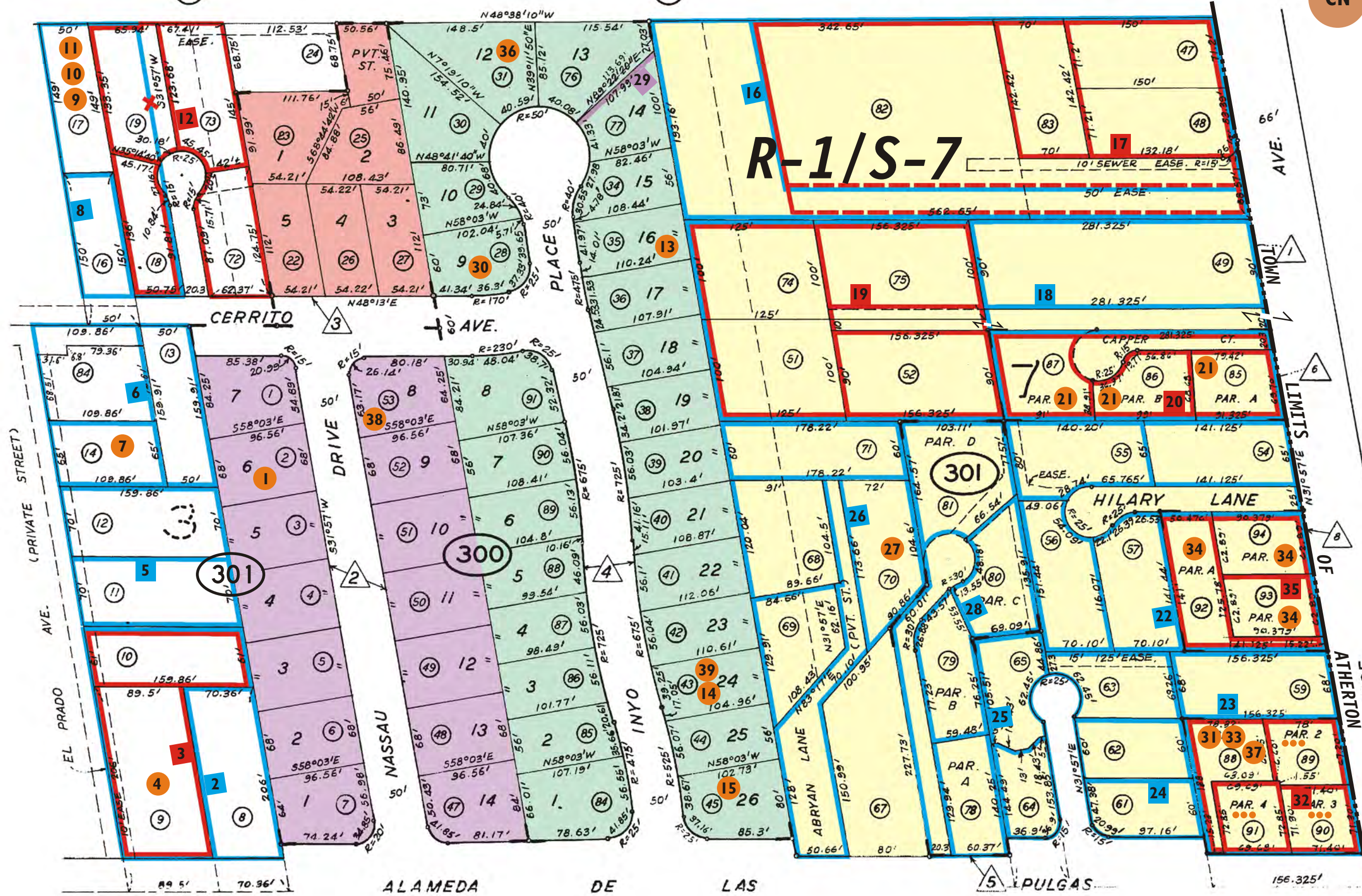


REFERENCES AND NOTES

Ref. No.	AP.N.	Notes	Ref. No.	AP.N.	Notes
1	069-301-020	VA 1538			
2	069-301-080, 090, 100	X6E 1386			
3	069-301-090, 100	X6E 1449, 4-22-55			
4	069-301-090	VA 1702			
5	069-301-110, 120	X6E 1219			
6	069-301-130, 140, 150	X6E 1873			
7	069-301-140	V 84-25			
8	069-301-160 thru 190	X6E 1167, 1-21-54. 2 parcels			
9	069-301-160, 170, 190	SMN 80-30, Denied. Originally LLA 80-7 = voided.			
10	069-301-170	MA-OA 85-44			
11	069-301-170	VA 85-26			
12	069-301-180, 190, 720, 730	X6E 2472, 5-9-62			
13	069-301-350	VA 1473			
14	069-301-430	VA 1-79			
15	069-301-450	VA Moore			
16	069-301-470, 480, 820, 830	X6E 76, 7-7-47, No approval stamp			
17	069-301-470, 480, 820, 830	X6E 2370, 8-16-61, check measurements in file (only part 820)			
18	069-301-490, 510, 520, 530	X6E 355			
	740, 750				
19	069-301-510, 520, 740, 750	X6E 2628			
20	069-301-850, 860, 870	SMN 85-4, Cond. opv. 5-7-85, final 7-23-86			
21	069-301-850, 860, 870	GP 86-6			
22	069-301-540 thru 580	X6E 1994			
23	069-301-590, 600	X6E 2692			
24	069-301-610, 620, 630	X6E 2726, 11-10-64			
25	069-301-640, 650	X6E 2684, 6-22-64			
26	069-301-680, 690, 700, 710	X6E 1949, 9-25-57			
27	069-301-700	VA 1210			
28	069-301-780, 790, 800, 810	X6E 3234			
29	069-301-760, 770	LLA 8-9-65			
30	069-301-280	V 88-58			
31	069-301-880 thru 910	MA-OA 89-8			
32	069-301-880 thru 910	SMN 89-14, Final 6-13-90			
33	069-301-880 thru 910	GP 90-2			
34	069-301-920, 930, 940	MA-OA 90-14			
35	069-301-920, 930, 940	SMN 90-4, 2-8-95			
36	069-301-310	VA 90-21			
37	069-301-600	V 90-279			
38	069-300-530	V 91-14			
39	069-301-430	V 91-36			
40	069-301-550	USE 2-76			



R-1/S-9

24

TOWN

8 PARCEL MAP VOL 68/19

LIMITS

25

7 PARCEL MAP VOL 63/87

6 PARCEL MAP VOL 58/69

5 PARCEL MAP VOL 25/13

OF

1 EAST GREENWOOD TRACT RSM D/40

2 ALAWOOD RSM 41/13

3 SJOBERG TRACT RSM 44/10

4 INYO GREEN RSM 61/38

WOODSIDE