

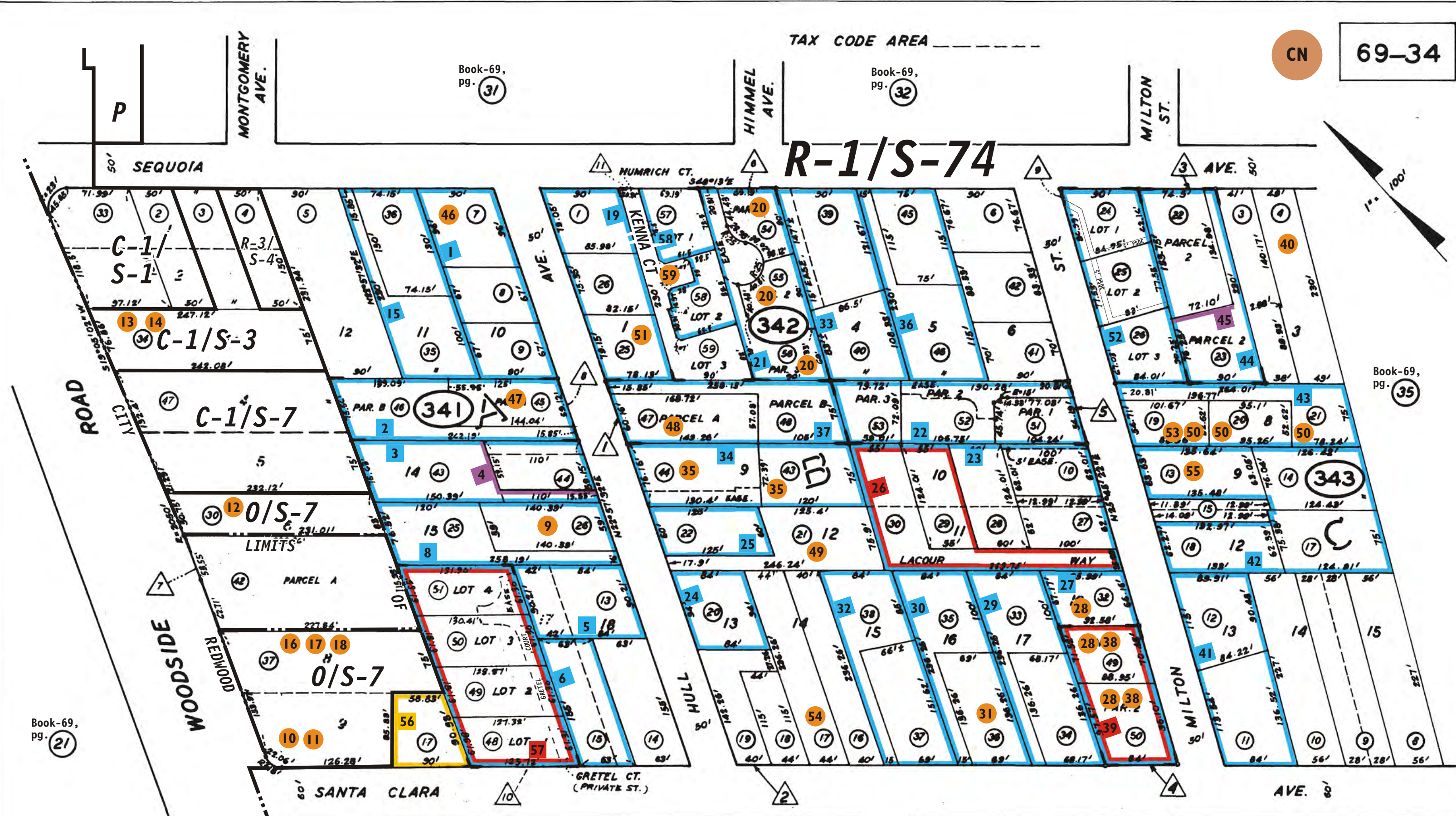
REFERENCES AND NOTES

Ref. No.	APN.	Notes	Ref. No.	APN.	Notes
1	069-341-070, 080, 090	X6E 538	42	069-343-130, 140, 170, 180	X6E #?
2	069-341-450, 460	SMN 86-11, Final 2-24-88	43	069-343-190, 200, 210	X6E 2508
3	069-341-430, 440	X6E 510	44	069-343-220, 230	X6E 1093
4	069-341-430, 440	LLA 86-15, Final 2-5-87	45	069-343-220, 230	LLA X6E 1-18
5	069-341-130	X6E 22	46	069-341-070	V 87-4
6	069-341-150	X6E 69	47	069-341-450	LLA 87-5, dropped, see SMN 86-11
7	069-341-160	X6E 1338 (superceded, see note 57)	48	069-342-470	OSP 87-8
8	069-341-250, 260	X6E 1443	49	069-342-210	VA 87-40
9	069-341-260	VA 497	50	069-343-190, 200, 210	LLA 12-3-65
10	069-341-370	UP 27-76, renewal 1986	51	069-342-250	V 90-78
11	069-341-370	VA 6-79	52	069-343-240, 250, 260	SMN 90-19, 4-14-94
12	069-341-300	UP 24-78	53	069-343-190	V 91-33
13	069-341-340	VA 1397	54	069-342-170	V 91-86
14	069-341-340	UP 1851	55	069-343-130	V 91-93
15	069-341-350, 360	X6E 1816	56	069-341-170	COC, PLN2001-00017, type A, 3-29-01
16	069-341-370	UP 85	57	069-341-480 thru 510	SMN, PLN2002-00458, 02-12-04
17	069-341-370	UP 1873?	58	069-342-020	SMN, PLN2006-00180, 04-05-07
18	069-341-370	UP 2474?	59	069-342-570, 580, 590	SNC from Humrich Court to Kenna Court, PLN2008-00133, 7-18-08
19	069-342-010, 250, 260	X6E 548			
20	069-342-540, 550, 560	X6E 2776, cond. apv., disapproved 2-9-67			
21	069-342-540, 550, 560	SMN 84-14, cond. apv. 11-2-84, final 9-17-85			
22	069-342-510, 520, 530	SMN 77-74, cond. apv. 2-12-78			
23	069-342-100, 270, 280	X6E 2062			
	290, 300				
24	069-342-200	SMN 79-52 certificate of compliance # 83055224			
25	069-342-220	X6E 1313			
26	069-342-290, 300	X6E 2185			
27	069-342-320, 490, 500	X6E 2166			
28	069-342-320, 490, 500	VA 1840			
29	069-342-330, 340	X6E 1333			
30	069-342-350, 360	X6E 2054			
31	069-342-360	VA 685			
32	069-342-370, 380	X6E 2214			
33	069-342-390, 400	X6E 2161			
34	069-430, 430, 440	X6E 2727?			
35	069-342-430, 440	VA 1232?			
36	069-342-450, 460	X6E 537			
37	069-342-470, 480	X6E 2892			
38	069-342-490, 500	UP 1766 (1716?)			
39	069-342-490, 500	X6E 3329 cond. apv. 9-25-75			
40	069-343-040	V 86-1			
41	069-343-110, 120	X6E 1186			

TAX CODE AREA

CN 69-34

R-1/S-74



Book-69, pg. 21

Book-69, pg. 31

Book-69, pg. 32

Book-69, pg. 35

Book-69, pg. 26

Book-69, pg. 27

- △ PARCEL MAP VOL 78/31-32
- △ PARCEL MAP VOL 75/43-44

- △ PARCEL MAP VOL 67/46-47
- △ PARCEL MAP VOL 60/44
- △ PARCEL MAP VOL 56/91
- △ PARCEL MAP VOL 56/37

- △ PARCEL MAP VOL 2/22
- △ HARVARD TRACT RSM 10/13
- △ PARCEL MAP VOL 27/34
- △ PARCEL MAP VOL 29/27
- △ PARCEL MAP VOL 41/44

D.M. ASSESSOR'S MAP COUNTY OF SAN MATEO, CALIF

24.3