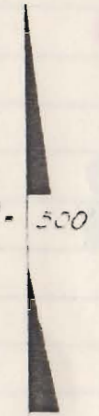


TAX CODE AREA



78-25



BK-75
pg. 33

BK-75
pg. 32

250

6

BK-78
pg. 13

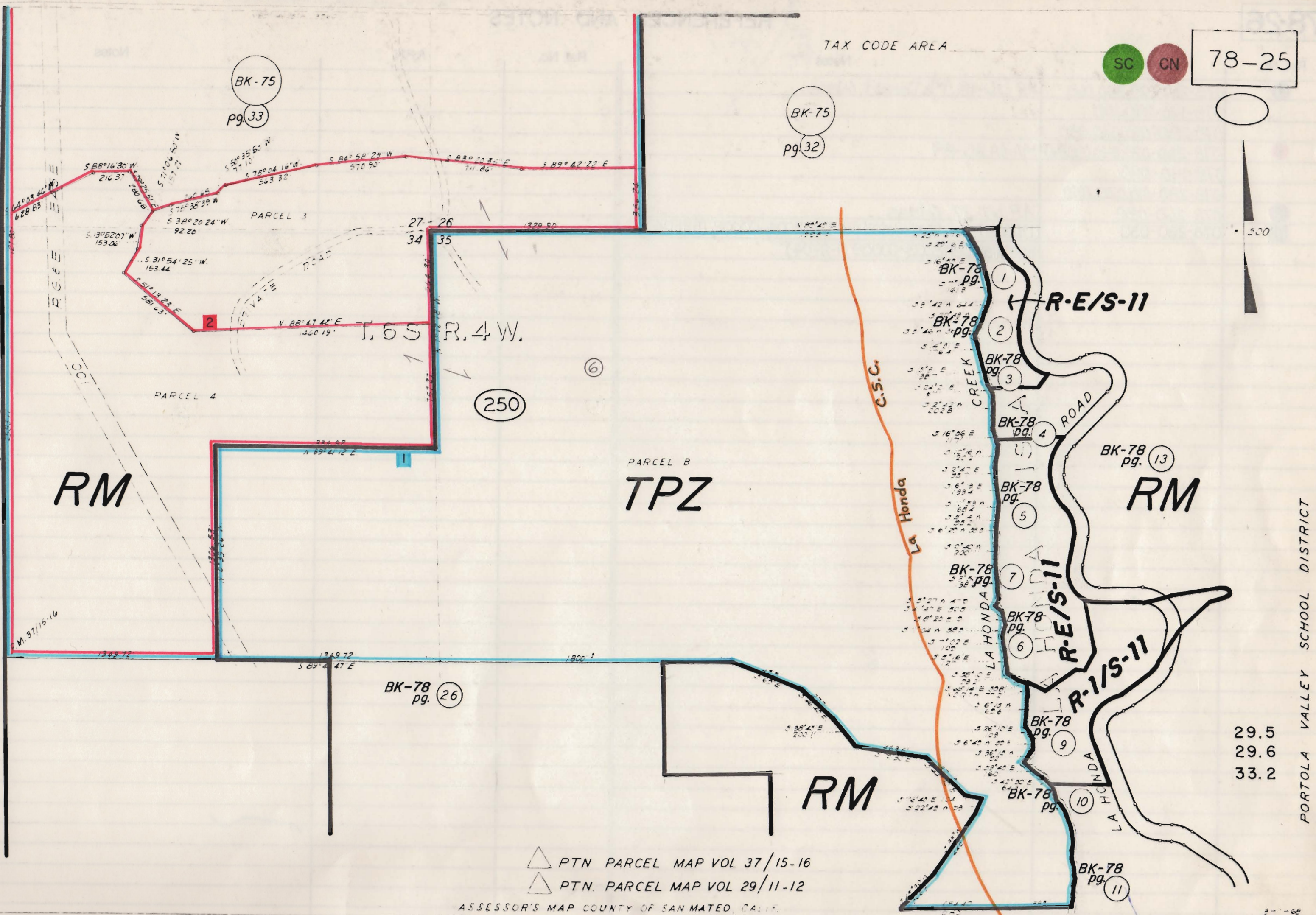
BK-78
pg. 26

29.5

29.6

33.2

BK-78
pg. 11



- △ PTN. PARCEL MAP VOL 37/15-16
- △ PTN. PARCEL MAP VOL 29/11-12