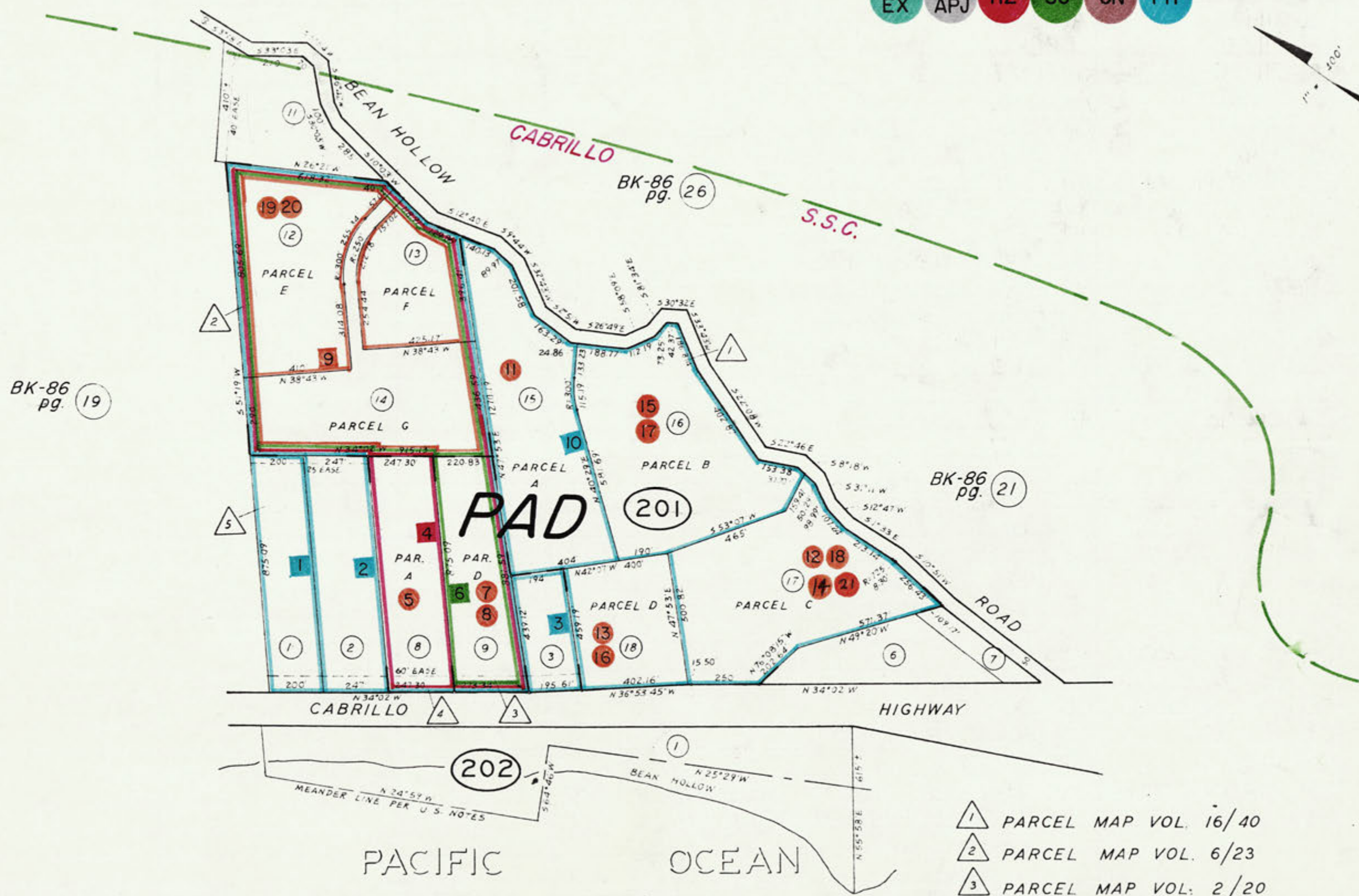


TAX CODE AREA

ZONING

ALL CD 86-20

- AG
EX
- CZ
APJ
- HZ
- SC
- CN
- FH



BK-86 pg. 19

BK-86 pg. 26

BK-86 pg. 21

- △ 1 PARCEL MAP VOL. 16/40 39.1
- △ 2 PARCEL MAP VOL. 6/23 39.6
- △ 3 PARCEL MAP VOL. 2/20
- △ 4 PARCEL MAP VOL. 1/51
- △ 5 PENINSULA FARMS CO. SUB. NO. 1 RSM 11/18