

## REFERENCES AND NOTES

| Ref. No. | APN.                              | Notes  | Ref. No. | APN. | Notes |
|----------|-----------------------------------|--|----------|------|-------|
| 1        | 086-211-010, 020, 030, 040        | X6E 2561, 1-14-63. Note: 010 = This site only. |          |      |       |
| 2        | 086-211-030                       | UP 80-30                                       |          |      |       |
| 3        | 086-211-030                       | AR 80-11                                       |          |      |       |
| 4        | 086-211-030                       | CDP 81-20                                      |          |      |       |
| 5        | 086-211-040                       | UP 80-27                                       |          |      |       |
| 6        | 086-211-040                       | AR 80-10                                       |          |      |       |
| 7        | 086-211-040                       | CDP 82-31                                      |          |      |       |
| 8        | 086-211-110                       | UP 45-77                                       |          |      |       |
| 9        | 086-211-130, 140                  | X6E 2374                                       |          |      |       |
| 10       | 086-211-190 ptr.                  | X6E 2522, 7-30-62                              |          |      |       |
| 11       | 086-211-200, 210                  | X6E 2373, X6E 2404, X6E 2755, Disapproved      |          |      |       |
| 12       | 086-211-200, 210                  | X6E 3046, Cond. apv. 4-1-70                    |          |      |       |
| 13       | 086-211-200                       | VA 1270  |          |      |       |
| 14       | 086-211-200                       | CDP 86-1                                       |          |      |       |
| 15       | 086-211-210                       | MA-0A 84-126                                   |          |      |       |
| 16       | 086-212-110, 020, 080<br>100, 110 | X6E 2902                                       |          |      |       |
| 17       | 086-212-010                       | AP 70-07, Cevalasco                            |          |      |       |
| 18       | 086-212-010                       | UP 36-77                                       |          |      |       |
| 19       | 086-212-010, 020                  | UP 83-12, CDP 83-26                            |          |      |       |
| 20       | 086-212-020                       | UP 82-15, CDP 82-35                            |          |      |       |
| 21       | 086-212-020                       | GP 83-11                                       |          |      |       |
| 22       | 086-212-080, 100, 110             | X6E 2943                                       |          |      |       |
| 23       | 086-212-100, 110                  | X6E 3070, 1970, Discontinued                   |          |      |       |
| 24       | 086-212-100, 110                  | X6E 3264, Cond. apv. 2-10-73                   |          |      |       |
| 25       | 086-212-110                       | V 83-14  |          |      |       |
| 26       | 086-212-010, 020                  | V 89-85  |          |      |       |
| 27       | 086-211-080, 090                  | MA-0A 90-22                                    |          |      |       |
| 28       | 086-211-080, 090                  | CDP 90-35                                      |          |      |       |
| 29       | 086-211-130                       | CDP 90-61, ARX 90-10                           |          |      |       |
| 30       | 086-212-100                       | CDP 90-63                                      |          |      |       |
| 31       | 086-212-010, 020                  | ENV 91-0004, CDP 91-0001, V10 89-85            |          |      |       |
| 32       | 086-211-020                       | CDP 91-0036, RMD 91-0014                       |          |      |       |

ALL  
CD

TAX CODE AREA \_\_\_\_\_

ZONING \_\_\_\_\_

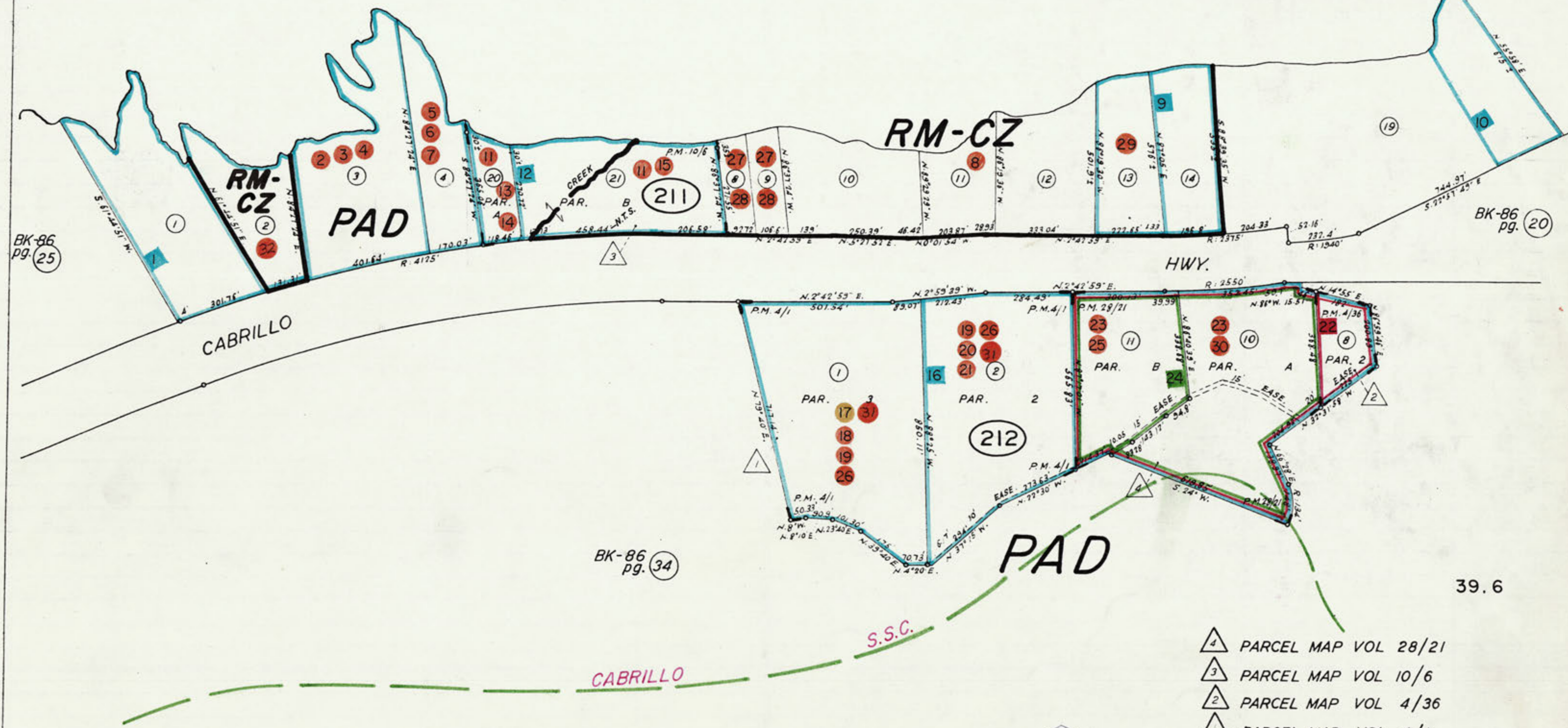
AG EX CZ APJ SH HZ SC CN FH AP

All in S.S.C.



PACIFIC

OCEAN



BK-86 pg. 25

BK-86 pg. 20

BK-86 pg. 34

39.6

- △ PARCEL MAP VOL 28/21
- △ PARCEL MAP VOL 10/6
- △ PARCEL MAP VOL 4/36
- △ PARCEL MAP VOL 4/1