

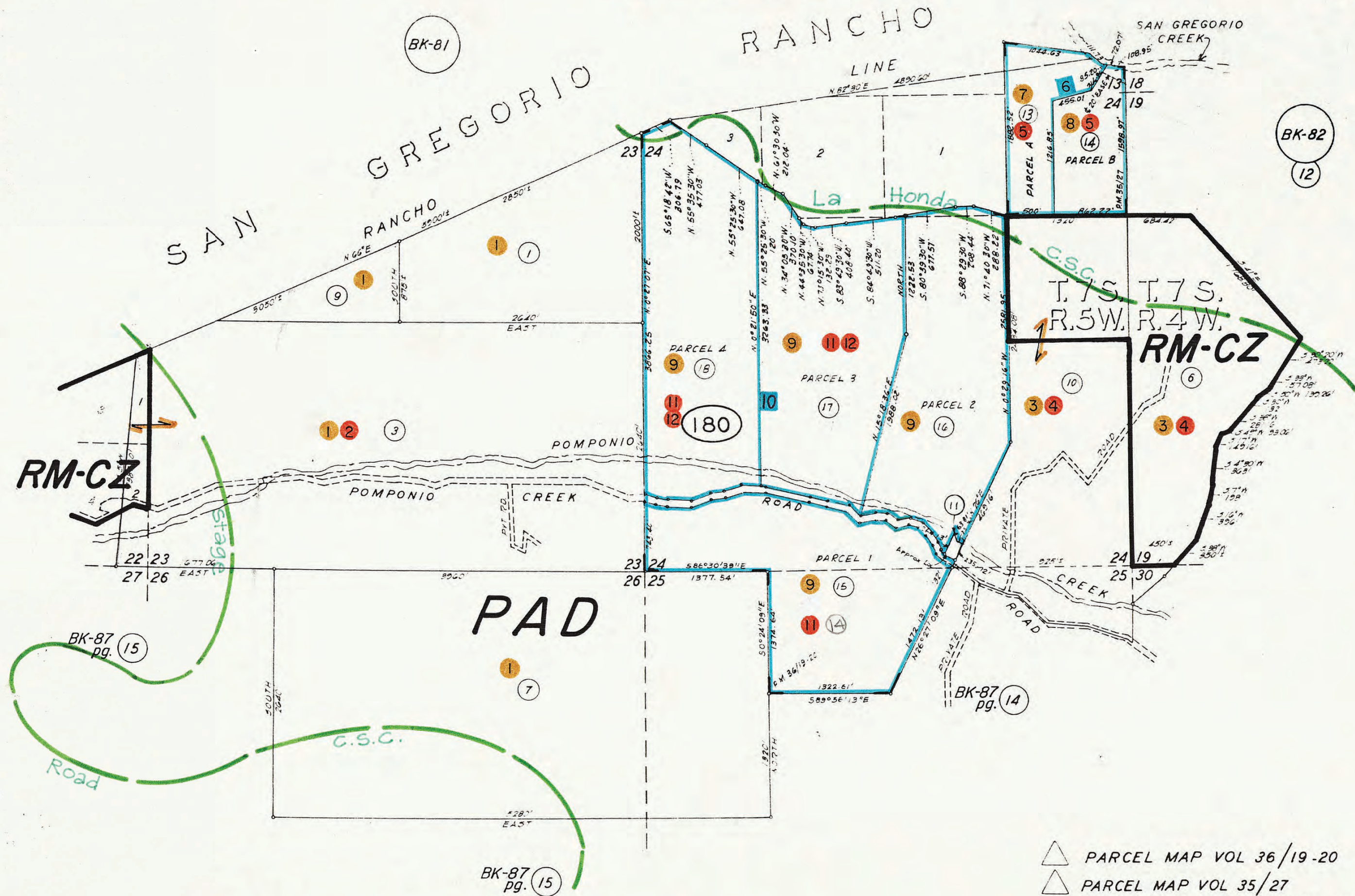




AG EX CZ APJ SH HZ SC FH AP

TAX CODE AREA

ALL CD 87-18



BK-82  
12

BK-82  
11

RM-CZ

RM-CZ

PAD

BK-87 pg. 15

BK-87 pg. 14

BK-87 pg. 15



31.4  
32.6  
35.3  
36.1

△ PARCEL MAP VOL 36/19-20  
△ PARCEL MAP VOL 35/27  
CABRILLO UNIFIED SCHOOL DISTRICT  
LA HONDA-PESCADERO UNIFIED SCHOOL DISTRICT